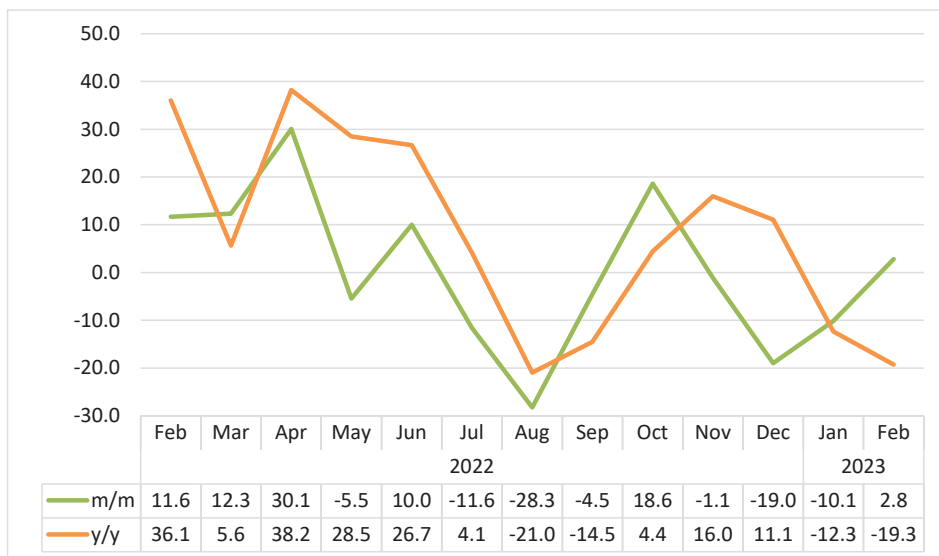


LIVESTOCK

FEBRUARY 2023

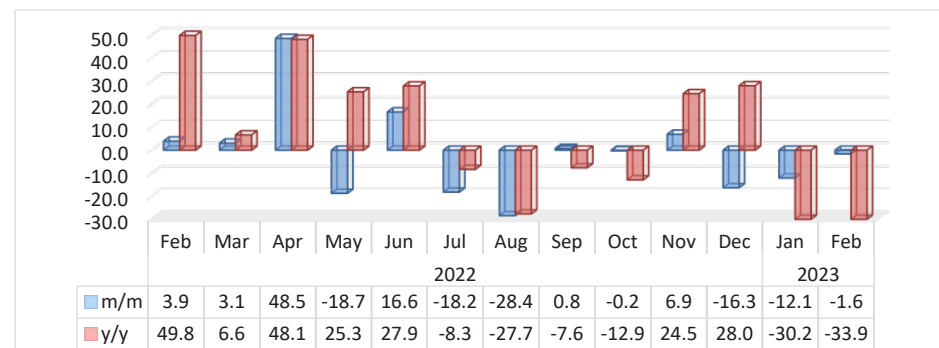


Chart 1: Livestock Marketed Composite Index, Percent



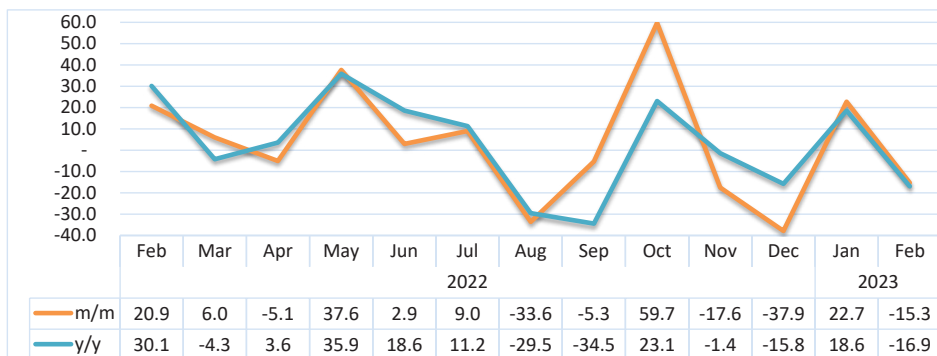
- The **Livestock Marketed Composite Index** recorded a monthly increase of 2.8 percent in February 2023 compared to a decline of 10.1 percent recorded in the preceding month. On the other hand, the index recorded a decline of 19.3 percent, year on year.
- The monthly increase recorded was due to indices of ‘Small stock export approved abattoirs and butchers’ and ‘Live small stock export’ that increased.
- In absolute terms, the total number of livestock marketed for February 2023 stood at 70 311 compared to 47 034 and 61 141 livestock that was marketed in the preceding month and in the corresponding month of 2022, respectively.

Chart 2: Cattle Export Approved Abattoirs & Butchers Index, Percent



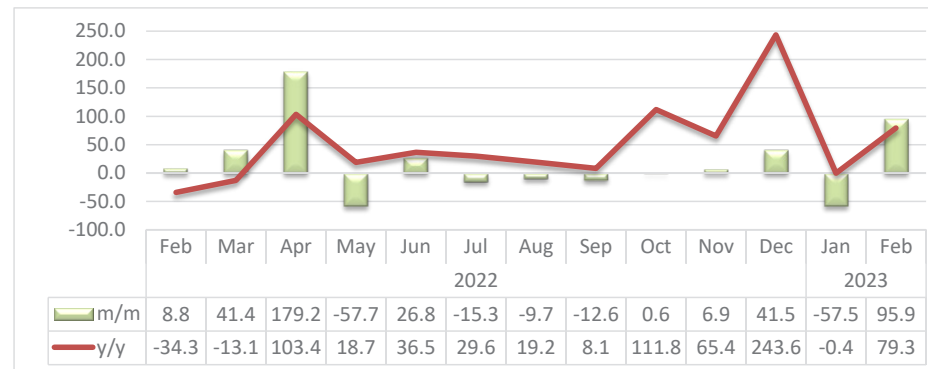
- The Index for **Cattle Export Approved Abattoirs and Butchers** in February 2023 recorded a decline of 1.6 percent monthly, compared to a decline of 12.1 percent recorded in the preceding month. Moreover, the index recorded a decline of 33.9 percent, year on year.
- The number of cattle marketed through export approved abattoirs and butchers for February 2023 was 5 333, of which 86.2 percent (4 595 cattle) were sourced from the Southern Veterinary Cordon Fence (S-VCF), while 13.8 percent (738 cattle) were sourced from the Northern Veterinary Cordon Fence (N-VCF).

Chart 3: Live Cattle Exported on Hoof Index, Percent



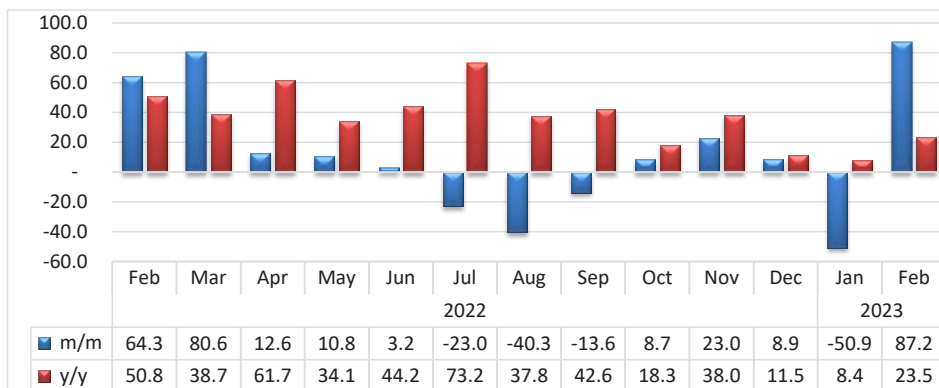
- The Index for **Live Cattle Exported on Hoof** recorded a monthly decline of 15.3 percent during the review month, compared to an increase of 22.7 percent that was registered in January 2023. Similarly, the index recorded a decline of 16.9 percent year on year.
- A total number of 8 337 live cattle on hoof were exported during the month of February 2023, compared to 9 840 cattle exported in January 2023, while 10 036 live cattle were exported a year earlier. Live cattle for February 2023 were mainly exported to South Africa (99.7%).

Chart 4: Small Stock Export Approved Abattoirs and Butchers Index, Percent



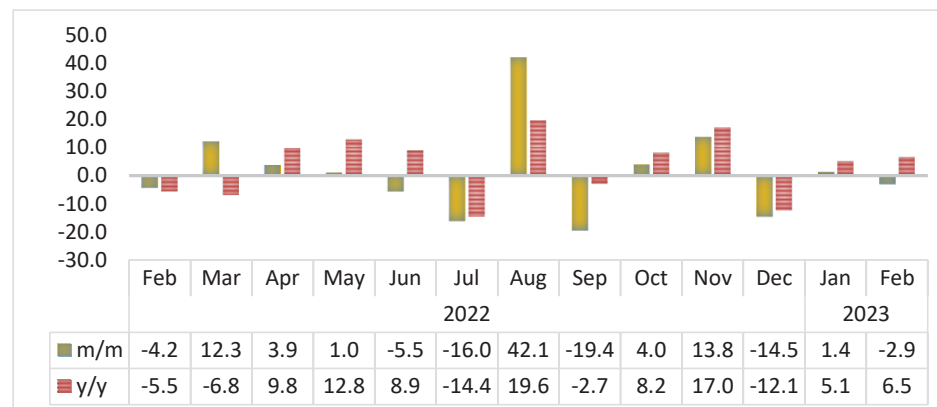
- The **Small Stock Export Approved Abattoirs and Butchers Index** recorded a monthly increase of 95.9 percent in February 2023 compared to a decline of 57.5 percent that was recorded in January 2023. Furthermore, the index increased by 79.3 percent year on year.
- A total of 13 128 small stock were marketed through the export approved abattoirs and butchers in February 2023, of which 99.9 percent (13 120 small stock) were sourced from Southern Veterinary Cordon Fence (S-VCF) and only 8 small stock were sourced from Northern Veterinary Cordon Fence (N-VCF).

Chart 5: Live Small Stock Export, Percent



- The **Index for Live Small Stock Export** recorded an increase of 87.2 percent in February 2023 on a monthly basis, compared to a decline of 50.9 percent registered in January 2023. On annual basis, the index registered an increase of 23.5 percent.
- During the review period, 39 834 small stock were exported. Sheep recorded the largest share of 84.0 percent, while goats accounted for a share of 16.0 percent of total live small stock export.
- Out of 33 468 live sheep exported in February 2023, 33 042 sheep (98.7%) were destined to South Africa, 303 live sheep (0.9%) to Angola while 123 (0.4%) live sheep were exported to Botswana.
- In addition, South Africa was the main destination of 6 318 live goats, accounting for accounting for 99.2 percent share.

Chart 6: Pigs Index, Percentage change



- For the month of February 2023, the **Index for Pigs** declined on a monthly basis by 2.9 percent, compared to an increase of 1.4 percent registered a month earlier. On annual basis, the index registered an increase of 6.5 percent.
- The number of pigs slaughtered locally in February 2023 stood at 3 679, compared to 3 790 pigs and 3 453 pigs slaughtered in January 2023 and February 2022, respectively.

Table1. Number of livestock marketed ('000)

Year	Month	Cattle export abattoirs & butchers	Cattle live exported South Africa & Angola	Small stock Export abattoirs and butchers	Live small stock South Africa and Angola	Pigs slaughtered	Total Livestock Marketed
2020	Jan	6.0	9.9	10.9	11.3	3.7	41.9
	Feb	6.5	21.3	11.4	18.4	3.4	61.1
	Mar	8.2	17.6	14.8	32.3	4.0	76.8
	Apr	7.9	10.3	27.5	33.7	3.9	83.3
	May	13.2	6.1	13.5	36.4	3.3	72.6
	Jun	9.7	10.0	13.1	37.8	3.8	74.4
	Jul	7.8	19.1	10.9	29.1	4.0	70.9
	Aug	5.6	15.6	8.7	21.7	3.5	55.1
	Sep	5.4	14.7	9.9	16.4	3.7	50.1
	Oct	7.4	12.8	10.9	17.3	3.7	52.0
	Nov	7.8	11.5	9.8	25.0	3.6	57.7
	Dec	6.2	9.7	10.7	29.4	4.2	60.2
2021	Jan	4.3	6.8	8.9	7.1	3.3	30.4
	Feb	5.4	7.7	11.1	21.4	3.7	49.3
	Mar	7.8	11.1	11.9	42.0	4.2	77.0
	Apr	8.3	9.7	14.2	40.6	3.7	76.5
	May	8.0	10.2	10.3	54.2	3.6	86.3
	Jun	9.2	12.1	11.3	52.0	3.5	88.1
	Jul	10.4	14.0	10.1	33.3	3.8	71.7
	Aug	9.5	14.7	9.9	25.0	3.8	63.0
	Sep	7.5	15.0	9.6	20.9	3.8	56.7
	Oct	7.9	12.7	4.9	27.4	3.6	56.5
	Nov	5.9	13.1	6.7	28.8	3.7	58.3
	Dec	4.8	9.5	4.6	38.9	4.3	62.1

Table1: Number of livestock marketed ('000), continue.....

Year	Month	Cattle export abattoirs & butchers	Cattle live exported South Africa & Angola	Small stock Export abattoirs and butchers	Live small stock South Africa and Angola	Pigs slaughtered	Total Livestock Marketed
2022	Jan	7.8	8.3	6.7	19.6	3.6	46.0
	Feb	8.1	10.0	7.3	32.3	3.5	61.1
	Mar	8.3	10.6	10.4	58.3	3.9	91.4
	Apr	12.4	10.1	28.9	65.6	4.0	121.0
	May	10.0	13.9	12.2	72.7	4.1	112.9
	Jun	11.7	14.3	15.5	75.0	3.8	120.4
	Jul	9.6	15.6	13.1	57.7	3.2	99.3
	Aug	6.9	10.4	11.9	34.5	4.6	68.1
	Sep	6.9	9.8	10.4	29.8	3.7	60.5
	Oct	6.9	15.7	10.4	32.4	3.8	69.2
	Nov	7.4	12.9	11.1	39.8	4.4	75.6
	Dec	6.2	8.0	15.8	43.3	3.7	77.0
2023	Jan	5.4	9.8	6.7	21.3	3.8	47.0
	Feb	5.3	8.3	13.1	39.8	3.7	70.3

Table2: Indices of Livestock marketed

Year	Month	Cattle export abattoirs & butchers	Cattle Live export on hoof	Small stock Export abattoirs and butchers	Live small stock South Africa and Angola	Pigs slaughtered	Composite Index
2020	Jan	60.6	46.6	24.9	23.6	118.7	51.3
	Feb	65.1	99.8	26.2	38.4	109.9	74.1
	Mar	82.2	82.7	33.8	67.3	126.1	78.7
	Apr	79.5	48.1	63.0	70.3	124.5	67.2
	May	133.1	28.7	31.0	75.8	105.3	80.3
	Jun	97.3	46.9	29.9	78.8	120.6	72.4
	Jul	78.4	89.6	25.0	60.5	128.9	78.4
	Aug	56.4	73.3	19.9	45.1	112.7	60.7
	Sep	54.8	68.7	22.6	34.1	119.2	57.7
	Oct	74.2	59.9	24.9	36.0	117.1	63.1
	Nov	78.5	53.8	22.4	52.1	115.2	63.8
	Dec	62.9	45.4	24.4	61.3	132.9	55.5
2021	Jan	43.2	32.0	20.4	14.7	105.5	36.8
	Feb	54.3	36.2	25.5	44.6	116.5	46.4
	Mar	78.6	52.1	27.3	87.5	132.6	67.2
	Apr	84.0	45.7	32.5	84.5	116.9	66.8
	May	80.7	47.9	23.6	112.9	114.9	67.9
	Jun	92.2	56.5	26.0	108.3	112.5	75.7
	Jul	105.2	65.7	23.2	69.4	120.1	81.4
	Aug	95.4	68.9	22.8	52.1	122.2	77.0
	Sep	75.3	70.2	22.0	43.5	121.1	67.9
	Oct	79.6	59.7	11.3	57.0	113.2	65.9
	Nov	59.6	61.4	15.4	60.0	119.1	58.7
	Dec	48.5	44.6	10.5	81.0	135.6	49.7

Table2: Indices of Livestock marketed, continue...

Year	Month	Cattle export abattoirs & butchers	Cattle Live export on hoof	Small stock Export abattoirs and butchers	Live small stock South Africa and Angola	Pigs slaughtered	Composite Index
2022	Jan	78.2	38.9	15.4	40.9	115.0	56.6
	Feb	81.3	47.0	16.8	67.2	110.1	63.2
	Mar	83.8	49.9	23.7	121.4	123.6	71.0
	Apr	124.4	47.3	66.2	136.6	128.4	92.3
	May	101.1	65.1	28.0	151.4	129.7	87.2
	Jun	117.9	67.0	35.5	156.2	122.5	95.9
	Jul	96.4	73.1	30.1	120.3	102.9	84.8
	Aug	69.0	48.6	27.1	71.8	146.2	60.8
	Sep	69.6	46.0	23.7	62.0	117.8	58.1
	Oct	69.4	73.4	23.9	67.4	122.5	68.9
	Nov	74.2	60.5	25.5	82.9	139.4	68.1
	Dec	62.1	37.6	36.1	90.3	119.2	55.2
2023	Jan	54.6	46.1	15.3	44.3	120.8	49.6
	Feb	53.7	39.1	30.1	83.0	117.3	51.0

- Data Sources** : The data was obtained from the Meat Board of Namibia.
- Base year** : Livestock Sectoral report is harmonised with the quarterly and annual national accounts base year 2015.
- Calculations of index** : The index is calculated based on the 2015 base year volumes and 2015 weights. The index is a magnitude of the volume Changes over time, with reference to the volume of the base year 2015. The index is calculated as a ratio of the volume of a specific component in a specific month to the total volume of that component in 2015.
- Conversion** : 1 basis point = 0.01 percent