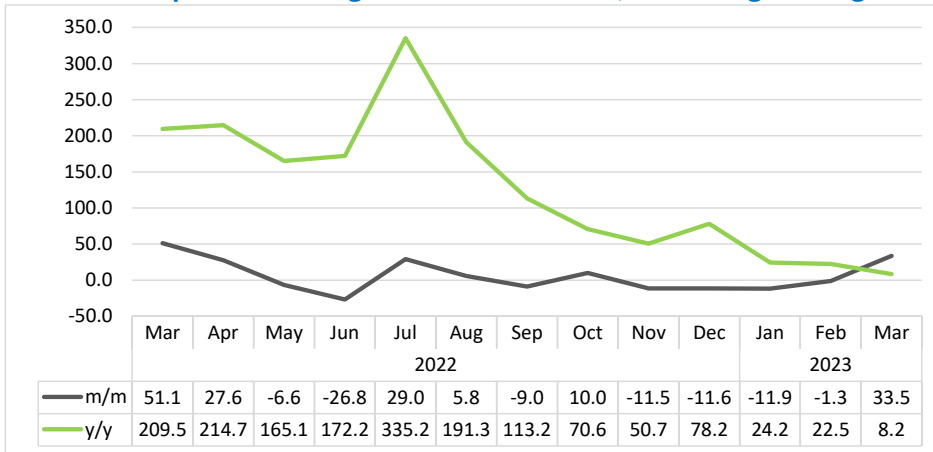


# TRAVELERS ARRIVALS & DEPARTURES

## MARCH 2023

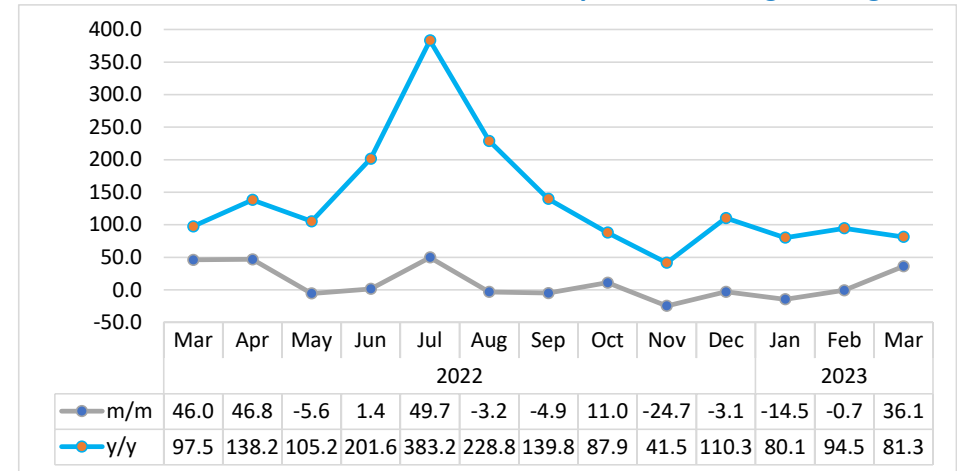


**Chart 1: Composite Passenger Movement Index, Percentage Change**



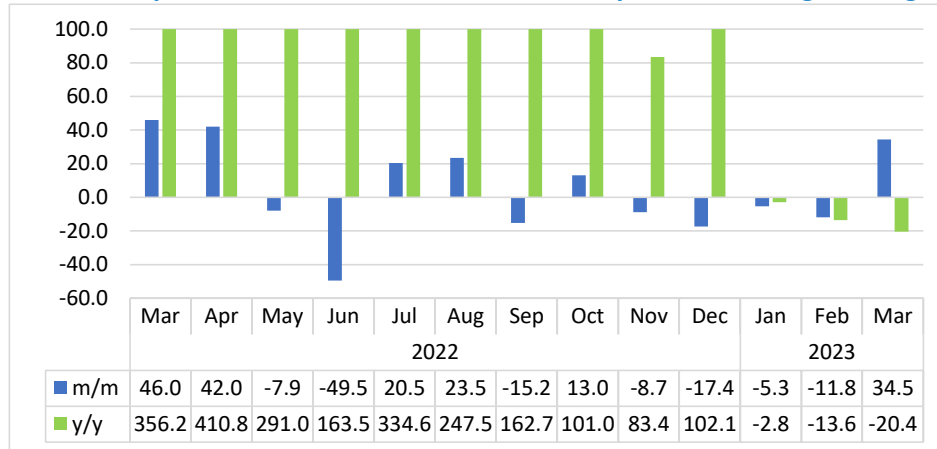
- The **Composite Passenger Movement Index** (consisting of regional, international, and domestic arrivals and departures of passengers at airports) rebounded on a monthly basis recording 33.5 percent in March 2023, as opposed to a reduction of 1.3 percent registered in the preceding month. In addition, the index slowed down recording an increase of 8.2 percent year-on-year (Chart 1).
- The increase registered on a monthly was driven from increases reflected in the movement of passengers across all the airports.
- In absolute terms, a total of 77 137 passengers were recorded at airport terminals across the country during March 2023, as opposed to 57 772 passengers that were observed in the previous month. Hosea Kutako International airport accounted for 75.3 percent in passengers' movement followed by Eros airport and Walvis airport followed with shares of 9.5 percent and 8.7 percent of passengers movement second and third place, respectively. Whereas Ya Toivo (3.8%), Luderitz (1.2%), Katima Mulilo (1.0%), Rundu (0.4%) and Keetmanshoop (0.05%) accounted for the least shares of the total passenger's movement.

**Chart 2: Arrivals Index for Hosea Kutako Airport, Percentage Change**



- The **Arrivals Index for Hosea Kutako Airport** (Chart 2) showed a strong growth in passengers' arrivals of 36.1 percent on a monthly basis in March 2023, compared to a contraction of 0.7 percent registered a month earlier. Moreover, the index recorded 81.3 percent in passengers' arrivals percent year-on-year.
- During March 2023, the number of passengers that arrived via Hosea Kutako Airport increased to 30 116 passengers, upward from 22 130 passengers recorded in the preceding month, while 16 614 passengers were recorded in the corresponding month of 2022.

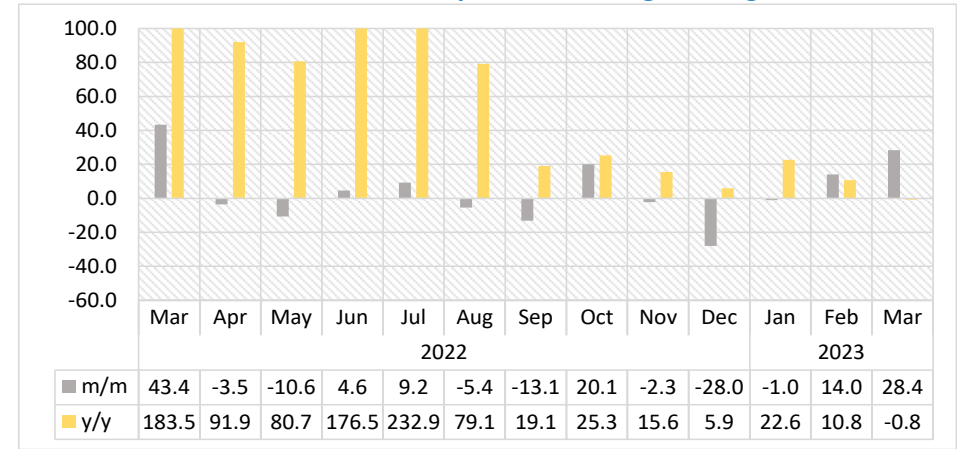
**Chart 3: Departures Index for Hosea Kutako Airport, Percentage Change<sup>1</sup>**



- The **Departures Index for Hosea Kutako Airport** (Chart 3) posted a growth of 34.5 percent in March 2023, compared to a reduction of 11.8 percent recorded in the previous month. Conversely, the index declined by 20.4 percent over the year.
- In absolute terms, the number of passengers that departed via Hosea Kutako airport increased to 27 964 passengers in March 2023, in contrast to 20 795 passengers in February 2023 while 35 110 passengers were registered in the corresponding month of 2022.

<sup>1</sup> This chart is limited to -60 percent and 100 percent for better presentation.

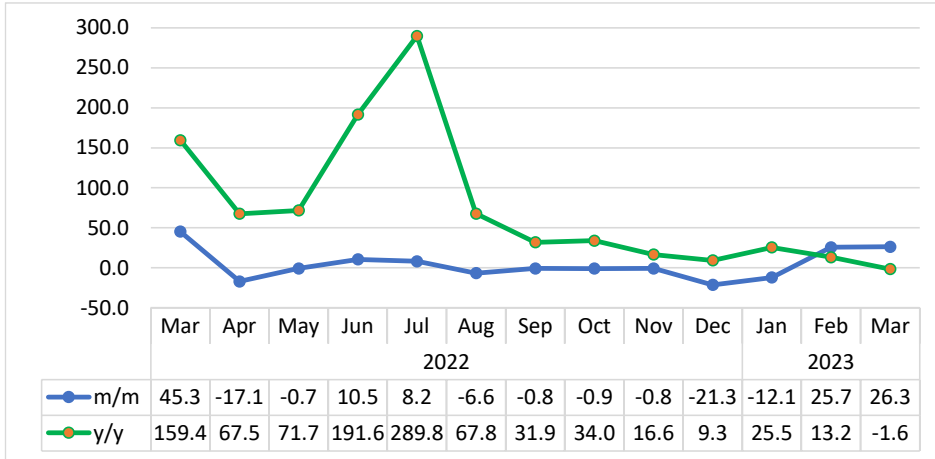
**Chart 4: Arrivals Index for Eros Airport, Percentage Change<sup>2</sup>**



- The **Arrivals Index for Eros Airport** (Chart 4) registered a growth of 28.4 percent on a monthly basis in March 2023, an improvement in passengers' movement when compared to a growth of 14.0 percent observed in the preceding month. On the other hand, the index declined by 0.8 percent year-on-year.
- The number of passengers that arrived in March 2023 via Eros Airport increased to 3 666 passengers as opposed to 2 856 passengers registered a month earlier while 3 667 passengers were registered in the corresponding period of 2022, respectively.

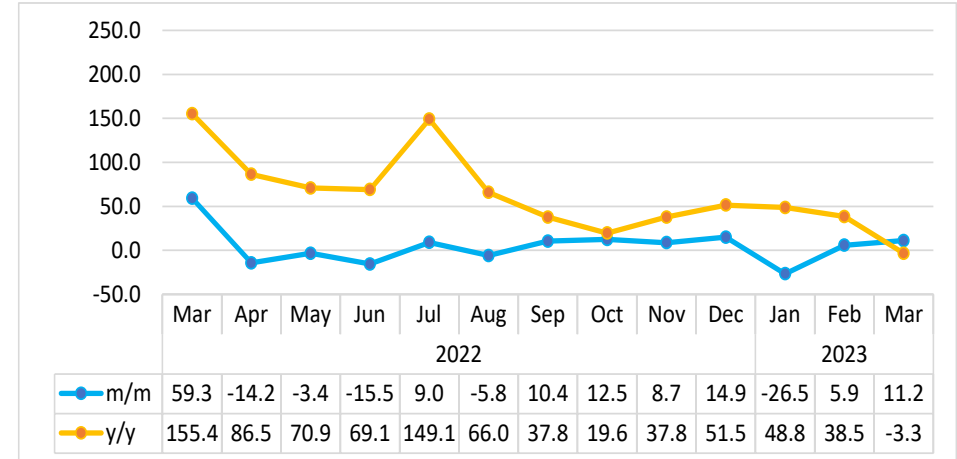
<sup>2</sup> This chart is limited to -60 percent and 100 percent for better presentation.

**Chart 5: Departures Index for Eros Airport, Percentage Change**



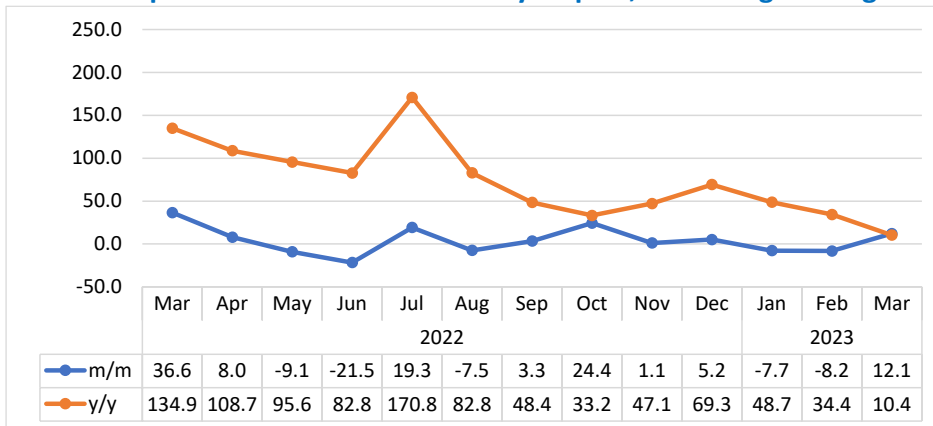
- The Index of **Departures for Eros Airport** (Chart 5) posted a growth of 26.3 percent on a monthly basis in March 2023 compared to a 25.7 percent increase of passengers registered in the preceding month. On the other hand, the index declined by 1.6 percent over the year.
- The number of passengers that departed through Eros Airport in March 2023 increased to 3 635 passengers, as opposed to 2 878 passengers registered in the preceding month while 3 694 passengers were registered in the corresponding month of 2022.

**Chart 6: Arrivals Index for Walvis Bay Airport, Percentage Change**



- The **Arrivals Index for Walvis Bay Airport** (Chart 6) registered a growth of 11.2 percent on a monthly basis in March 2023, better-off from a 5.9 percent increase posted a month earlier. Annually, the index declined by 3.3 percent.
- In absolute terms, the number of passengers that arrived via Walvis Bay airport increased to 3 319 passengers upward from 2 985 passengers recorded in the preceding month while 3 433 passengers were registered in the corresponding month of 2022.

**Chart 7: Departures Index for Walvis Bay Airport, Percentage Change**



- The Index for **Departures for Walvis Bay Airport** (Chart 7) registered an increase of 12.1 percent month-on-month in March 2023 compared to a decline of 8.2 percent registered in February 2023. Additionally, the index recorded a slower growth of 10.4 percent in passengers movement, year-on-year.
- In absolute terms, the number of passengers that departed via Walvis Bay airport increased to 3 425 passengers in March 2023 compared to 3 054 passengers and 3 103 passengers recorded in the preceding month and in the corresponding period of 2022, respectively.

**Table 1: The indices of regional, international and domestic arrivals and departures**

Year	Month	Total Passengers	Index for (Regional, International & Domestic) Arrivals	Index for (Regional, International & Domestic) Departures
2020	Jan	98.2	94.8	101.6
	Feb	92.4	92.6	92.2
	Mar	60.6	57.1	64.1
	Apr	2.0	1.1	3.0
	May	8.2	8.2	8.1
	Jun	9.4	9.1	9.7
	Jul	12.0	11.3	12.7
	Aug	7.8	7.7	8.0
	Sep	7.8	7.3	8.2
	Oct	21.2	22.8	19.6
	Nov	30.5	32.3	28.7
	Dec	34.8	37.3	32.2
2021	Jan	28.3	26.0	30.7
	Feb	19.7	19.2	20.1
	Mar	27.0	27.5	26.5
	Apr	33.9	34.2	33.5
	May	37.5	36.8	38.3
	Jun	26.8	25.6	28.0
	Jul	21.6	22.6	20.6
	Aug	34.1	34.1	34.2
	Sep	42.4	44.8	40.0
	Oct	58.3	61.2	55.4
	Nov	58.4	61.4	55.4
	Dec	43.7	44.3	43.1

**Table 1: The indices of regional, international and domestic arrivals and departures continue...**

Year	Month	Total Passengers	Index for (Regional, International & Domestic) Arrivals	Index for (Regional, International & Domestic) Departures
2022	Jan	55.2	41.1	69.4
	Feb	55.3	40.2	70.4
	Mar	83.5	61.8	105.5
	Apr	106.6	76.3	137.2
	May	99.5	72.1	127.3
	Jun	72.9	72.8	73.0
	Jul	94.0	101.4	86.5
	Aug	99.4	98.0	100.8
	Sep	90.4	93.0	87.8
	Oct	99.5	101.9	97.1
	Nov	88.0	83.9	92.3
	Dec	77.8	78.9	76.8
2023	Jan	68.6	66.2	70.9
	Feb	67.7	68.7	66.7
	Mar	90.4	92.5	88.3

## ***Methodology***

- Background:** The information in this report looks at both citizen and non-citizen travelers' arrivals and departures.
- Data sources:** Namibia Airports Company
- Base year:** The volumes have been referenced to 2015 data as of November 2019
- Conversion:** 1 basis point = 0.01 percent