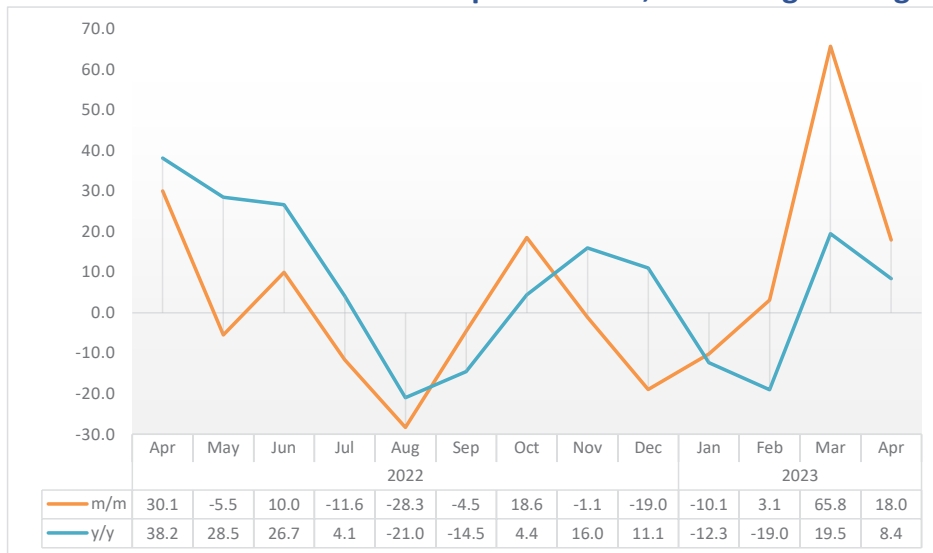


LIVESTOCK

APRIL 2023

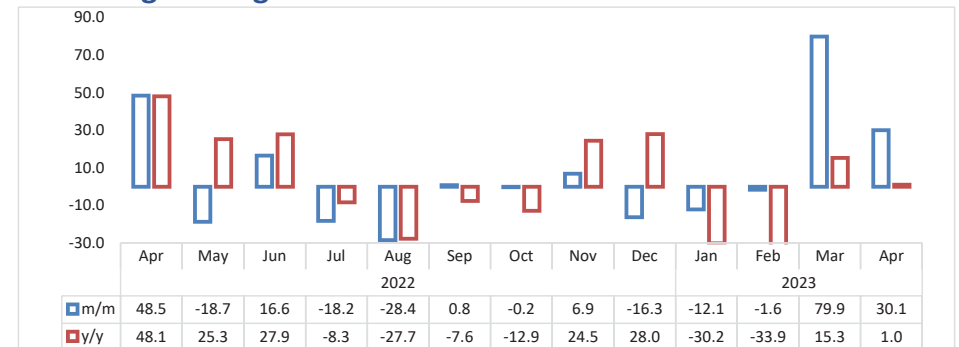


Chart 1: Livestock Marketed Composite Index, Percentage Change



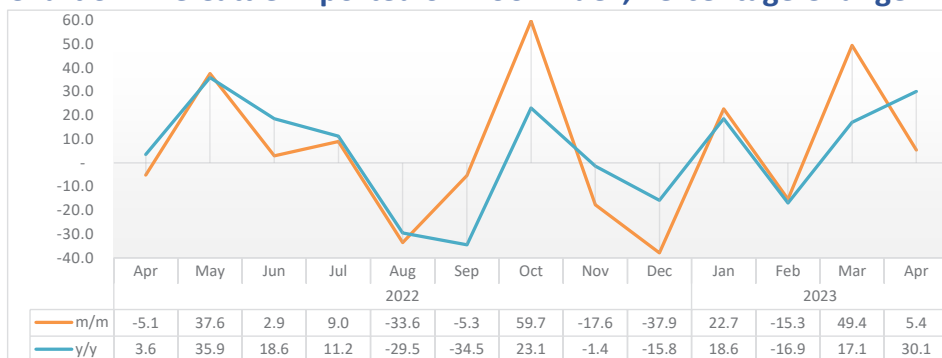
The **Livestock Marketed Composite Index** monthly growth slowed to 18.0 percent in April 2023, from 65.8 percent recorded in March 2023. Furthermore, the year-on-year the index grew by 8.4 percent compared to a growth of 38.2 percent registered in the corresponding month of 2022.

Chart 2: Cattle Export Approved Abattoirs and Butchers Index, Percentage Change



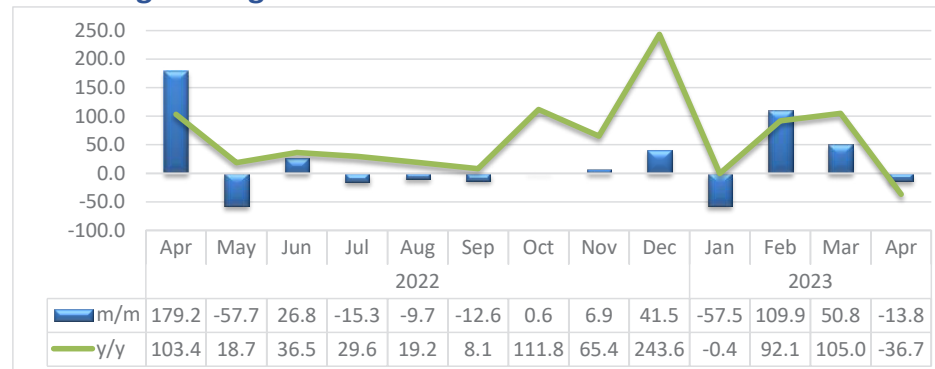
The **Cattle Export Approved Abattoirs and Butchers Index** recorded a monthly increase of 30.1 percent in the month under review compared to an increase of 79.9 percent recorded in March 2023. On an annual basis, the index slowed down, recording an increase of 1.0 percent.

Chart 3: Live Cattle Exported on Hoof Index, Percentage Change



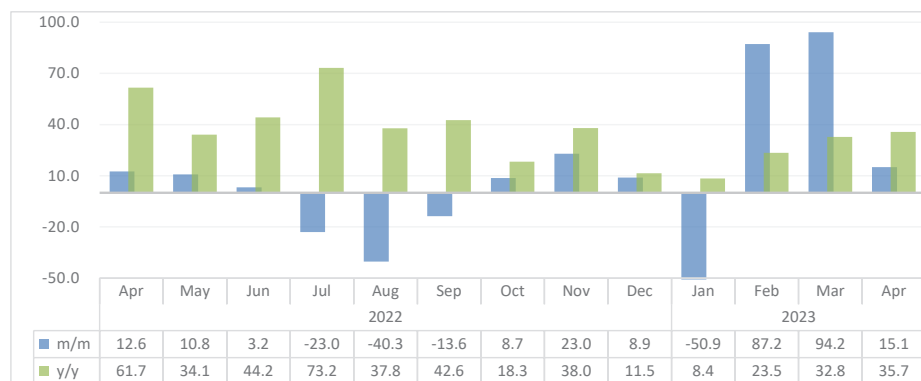
- The **Index for the Export of Live Cattle on Hoof** on a monthly basis grew by 5.4 percent in April 2023. This is a slowed growth when compared to an increase of 49.4 percent recorded in the preceding month. On annual basis, the index recorded a growth of 30.1 percent.
- During the review period, the total number of live cattle exported on hoof stood at 13 129 cattle, compared to 12 458 cattle and 10 095 cattle registered in March 2023 and the corresponding month of 2022, respectively.
- The export markets for live cattle on hoof were South Africa (98.5%) and Angola (1.5%).

Chart 4: Small Stock Export Approved Abattoirs and Butchers Index, Percentage Change



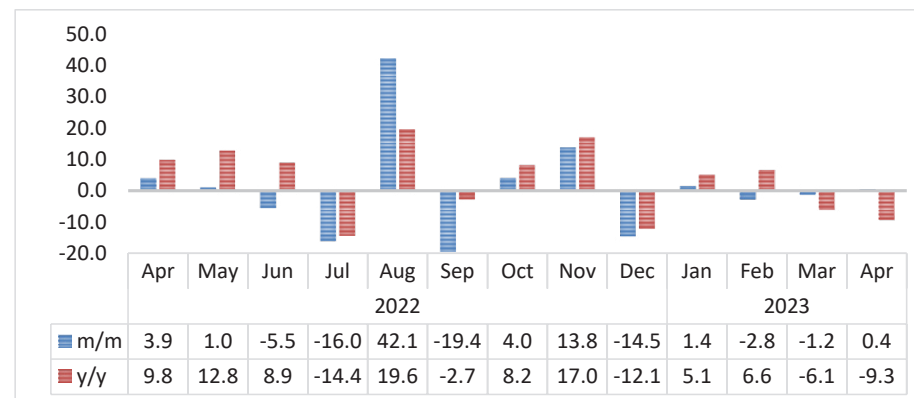
- During the month under review, the **Small Stock Export Approved Abattoirs and Butchers Index** decreased on monthly basis by 13.8 percent compared to an increase of 50.8 percent registered in March 2023. Moreover, the index declined by 36.7 percent year-on-year.
- A total of 18 284 small stock were marketed through export-approved abattoirs and butchers in April 2023, of which 99.9 percent (18 267 small stock) were sourced from South of the Veterinary Cordon Fence (S-VCF), while only 17 small stock were sourced from North of the Veterinary Cordon Fence (N-VCF).

Chart 5: Live Small Stock Export, Percentage Change



- The **Index for the Export of Live Small Stock** recorded a monthly growth of 15.1 percent in April 2023, a slowdown when compared to an increase of 94.2 percent recorded in the preceding month. Additionally, the index recorded an increase of 35.7 year-on-year.
- During the review period, 89 015 small stocks were exported live. Sheep accounted for the largest share of 91.1 percent, whilst goats accounted for 8.9 percent of the total export share of live small stock.

Chart 6: Pigs Index, Percentage Change



- The **Index for Pigs** posted a marginal growth of 0.4 percent on monthly basis, which is an improvement when compared to a decline of 1.2 percent recorded in March 2023. However, the index declined by 9.3 percent on an annual basis.
- In absolute terms, the number of pigs slaughtered stood at 3 651 compared to 4 026 pigs slaughtered in the corresponding month of 2022.

- Data Sources** : The data was obtained from the Meat Board of Namibia.
- Base year** : Livestock Sectoral report is harmonized with the quarterly and annual national accounts base year 2015.
- Calculations of index** : The index is calculated based on the 2015 base year volumes and 2015 weights. The index is the magnitude of the volume. Changes over time, with reference to the volume of the base year 2015. The index is calculated as a ratio of the volume of a specific component in a specific month to the total volume of that component in 2015.
- Conversion** : 1 basis point = 0.01 percent

Table 1. Number of livestock marketed ('000)

Year	Month	Cattle export abattoirs & butchers	Cattle live exported to South Africa, Angola, Botswana, Zambia and Zimbabwe	Small stock Export abattoirs and butchers	Live small stock South Africa and Angola	Pigs slaughtered	Total Livestock Marketed
2020	Jan	6	10	11	11	4	42
	Feb	6	21	11	18	3	61
	Mar	8	18	15	32	4	77
	Apr	8	10	28	34	4	83
	May	13	6	14	36	3	73
	Jun	10	10	13	38	4	74
	Jul	8	19	11	29	4	71
	Aug	6	16	9	22	4	55
	Sep	5	15	10	16	4	50
	Oct	7	13	11	17	4	52
	Nov	8	11	10	25	4	58
	Dec	6	10	11	29	4	60
2021	Jan	4	7	9	7	3	30
	Feb	5	8	11	21	4	49
	Mar	8	11	12	42	4	77
	Apr	8	10	14	41	4	77
	May	8	10	10	54	4	86
	Jun	9	12	11	52	4	88
	Jul	10	14	10	33	4	72
	Aug	9	15	10	25	4	63
	Sep	7	15	10	21	4	57
	Oct	8	13	5	27	4	56
	Nov	6	13	7	29	4	58
	Dec	5	10	5	39	4	62

Table 1. Number of livestock marketed ('000) cont...

Year	Month	Cattle export abattoirs & butchers	Cattle live exported South Africa, Angola, Botswana, Zambia and Zimbabwe	Small stock Export abattoirs and butchers	Live small stock South Africa and Angola	Pigs slaughtered	Total Livestock Marketed
2022	Jan	8	8	7	20	4	46
	Feb	8	10	7	32	3	61
	Mar	8	11	10	58	4	91
	Apr	12	10	29	66	4	121
	May	10	14	12	73	4	113
	Jun	12	14	15	75	4	120
	Jul	10	16	13	58	3	99
	Aug	7	10	12	34	5	68
	Sep	7	10	10	30	4	61
	Oct	7	16	10	32	4	69
	Nov	7	13	11	40	4	76
	Dec	6	8	16	43	4	77
2023	Jan	5	10	7	21	4	47
	Feb	5	8	14	40	4	71
	Mar	10	12	21	77	4	124
	Apr	12	13	18	89	4	137

Table 2: Indices of Livestock marketed

Year	Month	Cattle export abattoirs & butchers	Cattle Live export on hoof	Small stock Export abattoirs and butchers	Live small stock South Africa, Angola, Botswana, Zambia and Zimbabwe	Pigs slaughtered	Composite Index
2020	Jan	60.6	46.6	24.9	23.6	118.7	51.3
	Feb	65.1	99.8	26.2	38.4	109.9	74.1
	Mar	82.2	82.7	33.8	67.3	126.1	78.7
	Apr	79.5	48.1	63.0	70.3	124.5	67.2
	May	133.1	28.7	31.0	75.8	105.3	80.3
	Jun	97.3	46.9	29.9	78.8	120.6	72.4
	Jul	78.4	89.6	25.0	60.5	128.9	78.4
	Aug	56.4	73.3	19.9	45.1	112.7	60.7
	Sep	54.8	68.7	22.6	34.1	119.2	57.7
	Oct	74.2	59.9	24.9	36.0	117.1	63.1
	Nov	78.5	53.8	22.4	52.1	115.2	63.8
	Dec	62.9	45.4	24.4	61.3	132.9	55.5
2021	Jan	43.2	32.0	20.4	14.7	105.5	36.8
	Feb	54.3	36.2	25.5	44.6	116.5	46.4
	Mar	78.6	52.1	27.3	87.5	132.6	67.2
	Apr	84.0	45.7	32.5	84.5	116.9	66.8
	May	80.7	47.9	23.6	112.9	114.9	67.9
	Jun	92.2	56.5	26.0	108.3	112.5	75.7
	Jul	105.2	65.7	23.2	69.4	120.1	81.4
	Aug	95.4	68.9	22.8	52.1	122.2	77.0
	Sep	75.3	70.2	22.0	43.5	121.1	67.9
	Oct	79.6	59.7	11.3	57.0	113.2	65.9
	Nov	59.6	61.4	15.4	60.0	119.1	58.7
	Dec	48.5	44.6	10.5	81.0	135.6	49.7

Table 2: Indices of Livestock marketed cont....

Year	Month	Cattle export abattoirs & butchers	Cattle Live export on hoof	Small stock Export abattoirs and butchers	Live small stock South Africa, Angola, Botswana, Zambia and Zimbabwe	Pigs slaughtered	Composite Index
2022	Jan	78.2	38.9	15.4	40.9	115.0	56.6
	Feb	81.3	47.0	16.8	67.2	110.1	63.2
	Mar	83.8	49.9	23.7	121.4	123.6	71.0
	Apr	124.4	47.3	66.2	136.6	128.4	92.3
	May	101.1	65.1	28.0	151.4	129.7	87.2
	Jun	117.9	67.0	35.5	156.2	122.5	95.9
	Jul	96.4	73.1	30.1	120.3	102.9	84.8
	Aug	69.0	48.6	27.1	71.8	146.2	60.8
	Sep	69.6	46.0	23.7	62.0	117.8	58.1
	Oct	69.4	73.4	23.9	67.4	122.5	68.9
	Nov	74.2	60.5	25.5	82.9	139.4	68.1
	Dec	62.1	37.6	36.1	90.3	119.2	55.2
2023	Jan	54.6	46.1	15.3	44.3	120.8	49.6
	Feb	53.7	39.1	32.2	83.0	117.4	51.2
	Mar	96.6	58.4	48.6	161.1	116.0	84.8
	Apr	125.7	61.5	41.9	185.4	116.4	100.1