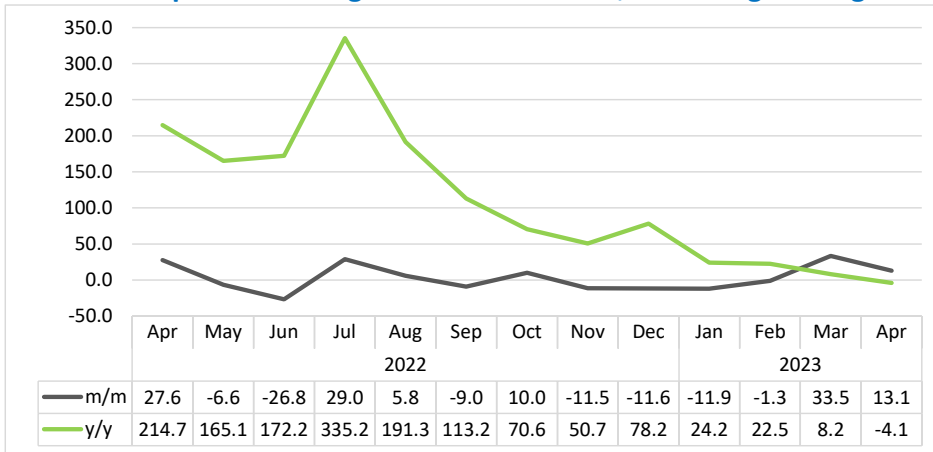


# TRAVELERS ARRIVALS & DEPARTURES

APRIL 2023



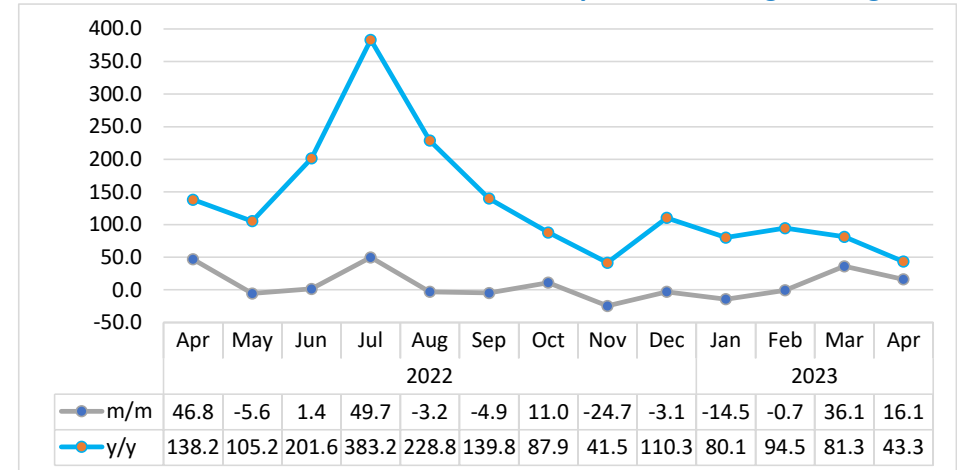
**Chart 1: Composite Passenger Movement Index, Percentage Change**



- The **Composite Passenger Movement Index** (consisting of regional, international, and domestic arrivals and departures of passengers at airports) slowed down on a monthly basis recording an increase of 13.1 percent in April 2023, compared to a growth of 33.5 percent registered in the previous month. Conversely, the index declined by 4.1 percent year-on-year (Chart 1).
- The increase registered on a monthly was driven from increases reflected in the movement of passengers for Hosea Kutako airport, Walvis Bay airport, Luderitz airport and Keetmanshoop airport. On the other hand, the rest of the airports registered monthly declines in the number of passenger movements.
- In absolute terms, a total of 87 240 passengers were recorded at airport terminals across the country during April 2023, compared to 77 137 passengers that were observed in the preceding month. Hosea Kutako International airport accounted for 79.2 percent in passengers' movement followed by Walvis Bay and Eros airport with shares of 8.0 percent and 7.6 percent of passengers movement into second and

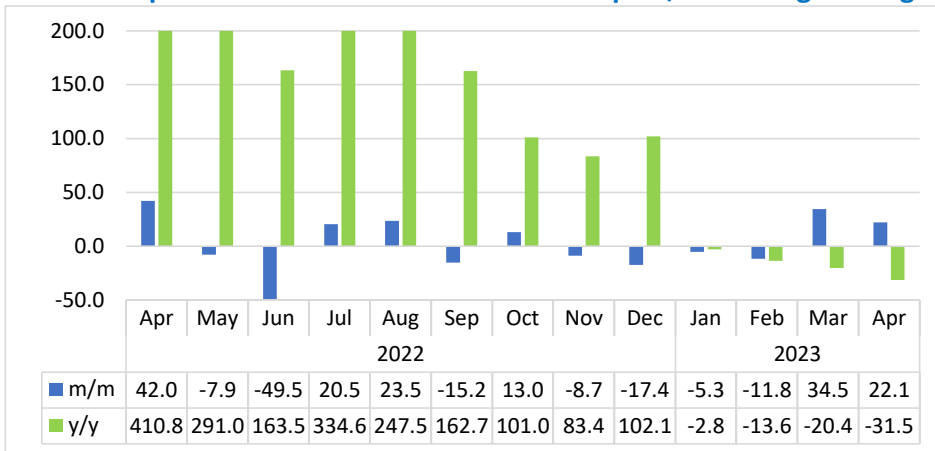
third place, respectively. Whereas Ya Toivo (2.7%), Luderitz (1.4%), Katima Mulilo (0.8%), Rundu (0.2%) and Keetmanshoop (0.13%) accounted for the least shares of the total passenger's movement.

**Chart 2: Arrivals Index for Hosea Kutako Airport, Percentage Change**



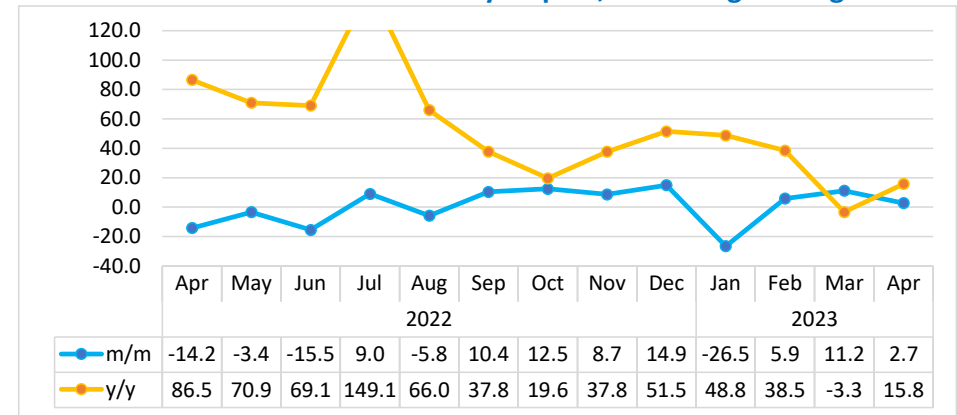
- The **Arrivals Index for Hosea Kutako Airport** (Chart 2) slowed down month-on-month recording an increase of 16.1 percent in April 2023 in relation to a strong growth of 36.1 percent registered in the preceding month. Moreover, the index recorded 43.3 percent in passengers' arrivals year-on-year.
- For April 2023, the number of passengers that arrived via Hosea Kutako Airport terminals increased to 34 964 passengers, upward from 30 116 passengers observed a month earlier, while 24 397 passengers were registered in the corresponding month of 2022.

**Chart 3: Departures Index for Hosea Kutako Airport, Percentage Change<sup>1</sup>**



- The **Departures Index for Hosea Kutako Airport** (Chart 3) slowed down registering an increase of 22.1 percent in April 2023, compared to a growth of 34.5 percent posted in the preceding month. On contrary, the index declined by 31.5 percent over the year.
- In absolute terms, the number of passengers that departed via Hosea Kutako airport terminals increased to 34 152 passengers in April 2023, as opposed to 27 964 passengers in March 2023 while 49 850 passengers were registered in the corresponding month of 2022.

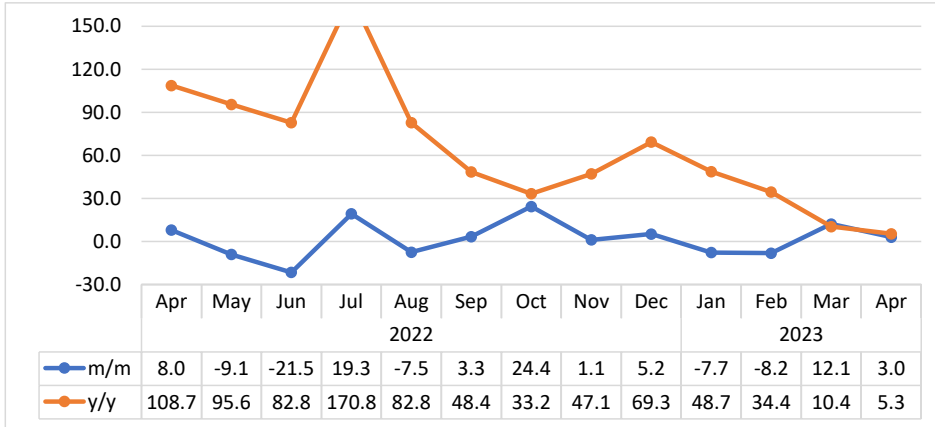
**Chart 4: Arrivals Index for Walvis Bay Airport, Percentage Change**



- The **Arrivals Index for Walvis Bay Airport** (Chart 4) slowed down recording an increase of 2.7 percent on a monthly basis in April 2023, backward from a growth of 11.2 percent registered a month earlier. Annually, the index increased by 15.8 percent.
- In absolute terms, the number of passengers that arrived via Walvis Bay airport increased to 3 410 passengers upward from 3 319 passengers and 2 945 passengers recorded in the previous month and in the corresponding month of 2022, respectively.

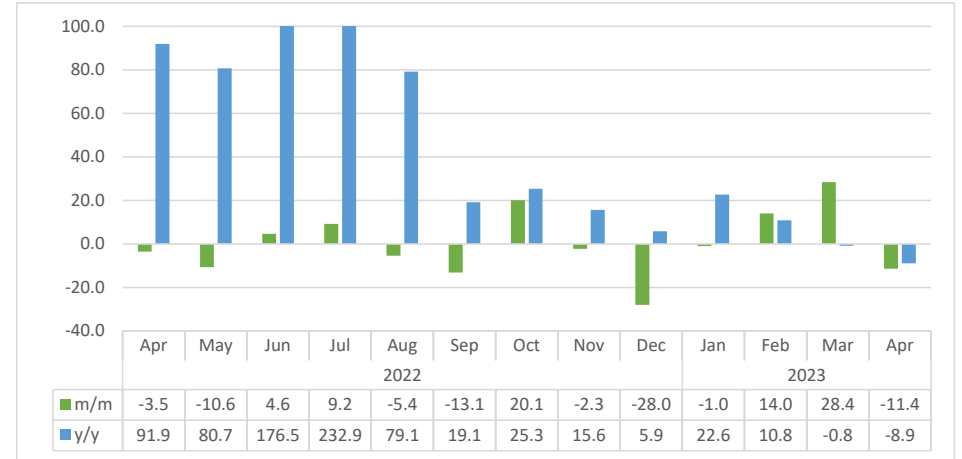
<sup>1</sup> This chart is limited to -60 percent and 100 percent for better presentation.

**Chart 5: Departures Index for Walvis Bay Airport, Percentage Change**



- The **Departures Index for Walvis Bay Airport** (Chart 5) slowed down registering an increase of 3.0 percent month-on-month in April 2023 compared to a growth of 12.1 percent recorded in March 2023. Moreover, the index posted a slower growth of 5.3 percent in passengers movement, year-on-year.
- In absolute terms, the number of passengers that departed via Walvis Bay airport increased to 3 528 passengers in April 2023 compared to 3 425 passengers and 3 350 passengers recorded in the preceding month and in the corresponding period of 2022, respectively.

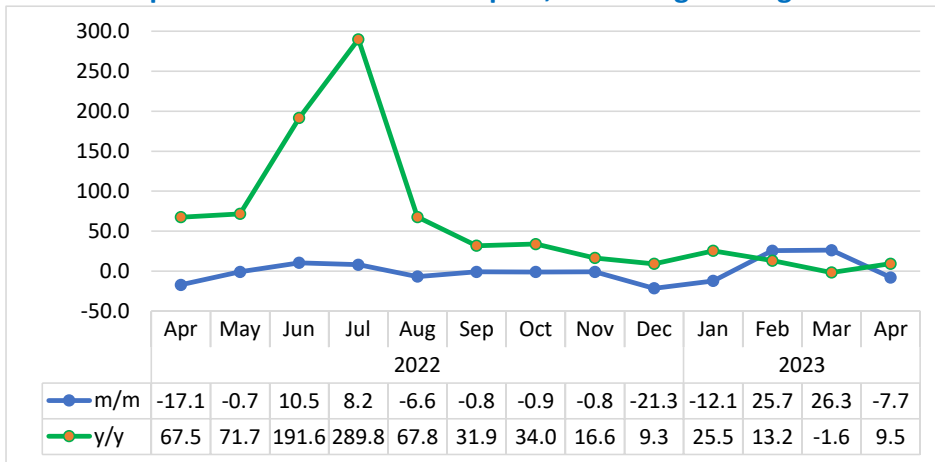
**Chart 6: Arrivals Index for Eros Airport, Percentage Change<sup>2</sup>**



- The **Arrivals Index for Eros Airport** (Chart 6) declined by 11.4 percent on a monthly basis in April 2023, a set-back in passengers' movement when compared to a growth of 28.4 percent posted in the preceding month. Additionally, the index declined by 8.9 percent year-on-year.
- The number of passengers that arrived in April 2023 via Eros Airport terminals declined to 3 248 passengers as opposed to 3 666 passengers and 3 566 passengers registered a month earlier and in the corresponding period of 2022, respectively.

<sup>2</sup> This chart is limited to -60 percent and 100 percent for better presentation.

**Chart 7: Departures Index for Eros Airport, Percentage Change**



- The Index of **Departures for Eros Airport** (Chart 7) showed a decline of 7.7 percent on a monthly basis in April 2023 in contrast to a 26.3 percent increase of passengers registered in the preceding month. On the other hand, the index increased by 9.5 percent over the year.
- The number of passengers that departed through Eros Airport terminals in April 2023 stood at 3 355 passengers, as opposed to 3 635 passengers registered in the preceding month while 3 064 passengers were registered in the corresponding month of 2022.

**Table 1: The indices of regional, international and domestic arrivals and departures**

Year	Month	Total Passengers	Index for (Regional, International & Domestic) Arrivals	Index for (Regional, International & Domestic) Departures
2020	Jan	98.2	94.8	101.6
	Feb	92.4	92.6	92.2
	Mar	60.6	57.1	64.1
	Apr	2.0	1.1	3.0
	May	8.2	8.2	8.1
	Jun	9.4	9.1	9.7
	Jul	12.0	11.3	12.7
	Aug	7.8	7.7	8.0
	Sep	7.8	7.3	8.2
	Oct	21.2	22.8	19.6
	Nov	30.5	32.3	28.7
	Dec	34.8	37.3	32.2
2021	Jan	28.3	26.0	30.7
	Feb	19.7	19.2	20.1
	Mar	27.0	27.5	26.5
	Apr	33.9	34.2	33.5
	May	37.5	36.8	38.3
	Jun	26.8	25.6	28.0
	Jul	21.6	22.6	20.6
	Aug	34.1	34.1	34.2
	Sep	42.4	44.8	40.0
	Oct	58.3	61.2	55.4
	Nov	58.4	61.4	55.4
	Dec	43.7	44.3	43.1

**Table 1: The indices of regional, international and domestic arrivals and departures continue...**

Year	Month	Total Passengers	Index for (Regional, International & Domestic) Arrivals	Index for (Regional, International & Domestic) Departures
2022	Jan	55.2	41.1	69.4
	Feb	55.3	40.2	70.4
	Mar	83.5	61.8	105.5
	Apr	106.6	76.3	137.2
	May	99.5	72.1	127.3
	Jun	72.9	72.8	73.0
	Jul	94.0	101.4	86.5
	Aug	99.4	98.0	100.8
	Sep	90.4	93.0	87.8
	Oct	99.5	101.9	97.1
	Nov	88.0	83.9	92.3
	Dec	77.8	78.9	76.8
2023	Jan	68.6	66.2	70.9
	Feb	67.7	68.7	66.7
	Mar	90.4	92.5	88.3
	Apr	102.2	102.4	102.1

## ***Methodology***

- Background:** The information in this report looks at both citizen and non-citizen travelers' arrivals and departures.
- Data sources:** Namibia Airports Company
- Base year:** The volumes have been referenced to 2015 data as of November 2019
- Conversion:** 1 basis point = 0.01 percent