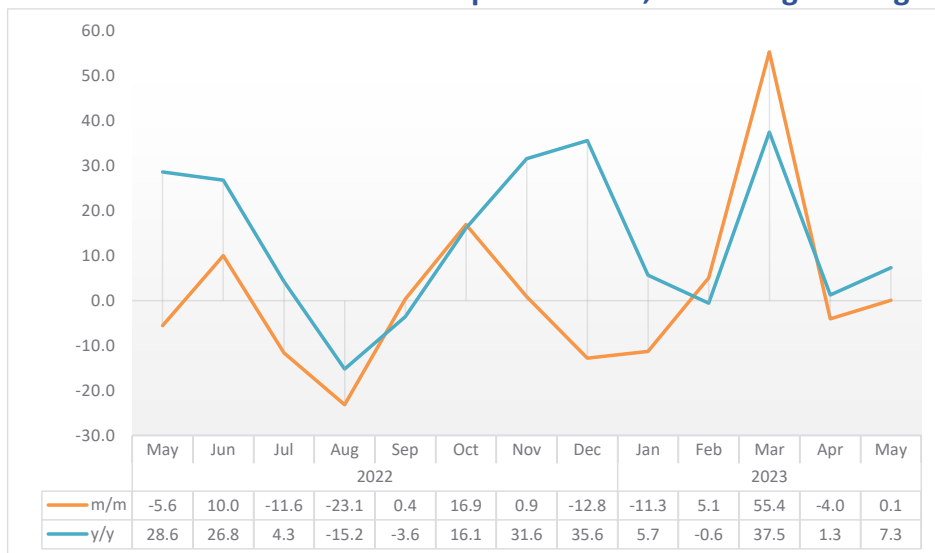


LIVESTOCK

MAY 2023

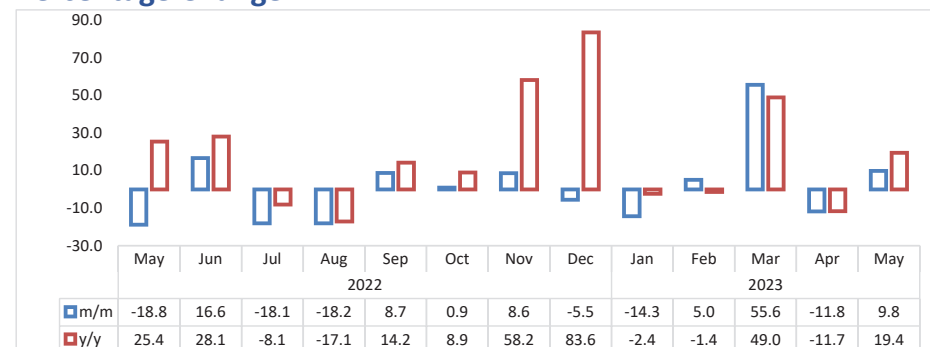


Chart 1: Livestock Marketed Composite Index, Percentage Change



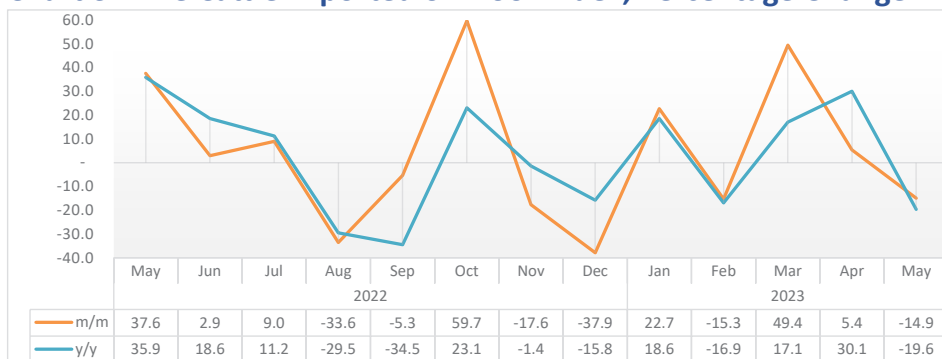
- The **Livestock Marketed Composite Index** monthly increased by 0.1 percent in May 2023 from a decline of 4.0 percent recorded in April 2023. Similarly, the year-on-year the index recorded a growth of 7.3 percent (Chart 1).
- The number of livestock marketed during the period under review amounted to 126 569 compared to 136 421 livestock and 113 055 livestock marketed in the preceding month and the corresponding month of 2022, respectively.

Chart 2: Cattle Export Approved Abattoirs and Butchers Index, Percentage Change



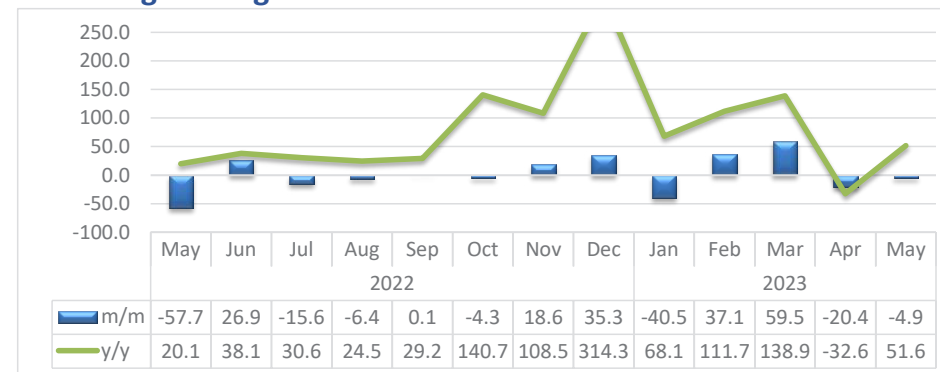
- The **Cattle Export Approved Abattoirs and Butchers Index** recorded a monthly increase of 9.8 percent in the month under review compared to a decline of 11.8 percent recorded in April 2023. On an annual basis, the index slowed down recording 19.4 percent (Chart 2).
- A total of 12 005 cattle was marketed to export approved abattoirs and butchers during May 2023, compared to 10 932 cattle marketed in the preceding month and 10 051 cattle recorded in the corresponding month of 2022.

Chart 3: Live Cattle Exported on Hoof Index, Percentage Change



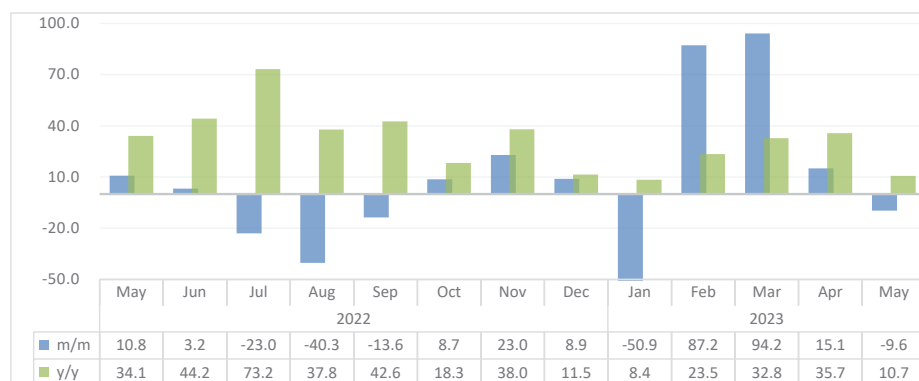
- The **Index for the Export of Live Cattle on Hoof** on a monthly basis recorded a decline of 14.9 percent in May 2023 compared to an increase of 5.4 percent recorded in the preceding month. Similarly, the index decreased by 19.6 percent year-on-year (Chart 3).
- During the review period, the total number of live cattle exported on hoof stood at 11 171, a decline when compared to 13 129 cattle and 13 894 cattle registered in April 2023 and the corresponding month of 2022, respectively.
- The export markets for live cattle on hoof were South Africa (94.5%) Angola (5.3%) and Botswana (0.2%).

Chart 4: Small Stock Export Approved Abattoirs and Butchers Index, Percentage Change



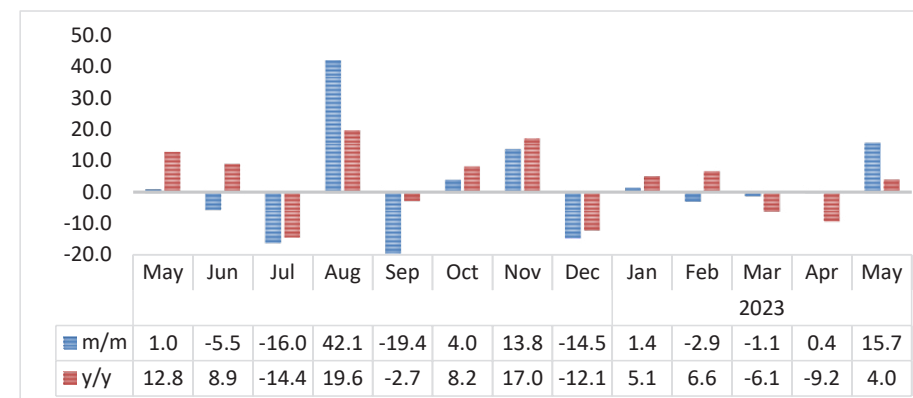
- During the month under review, the **Small Stock Export Approved Abattoirs and Butchers Index** decreased on monthly basis by 4.9 percent compared to a decline of 20.4 percent registered in April 2023. However, the index increased by 51.6 percent year-on-year (Chart 4).
- A total of 18 735 small stock was marketed through export-approved abattoirs and butchers during May 2023, of which 99.9 percent (18 723 small stock) were sourced from South of the Veterinary Cordon Fence (S-VCF), while only 12 small stock were sourced from North of the Veterinary Cordon Fence (N-VCF).

Chart 5: Live Small Stock Export, Percentage Change



- The **Index for the Export of Live Small Stock** recorded a decline of 9.6 percent in May 2023 compared to an increase of 15.1 percent recorded in the preceding month. On the other hand, the index recorded an increase of 10.7 year-on-year (Chart 5).
- During the review period, 80 428 small stock was exported live. Sheep accounted for the largest share of 84.6 percent, whilst goats accounted for 15.4 percent of the total export share of live small stock.

Chart 6: Pigs Index, Percentage Change



- The **Index for Pigs** posted a growth of 15.7 percent on monthly basis compared to a growth of 0.4 percent recorded in April 2023. Moreover, the index increased by 4.0 percent on an annual basis (Chart 6).
- The number of pigs slaughtered in May 2023 stood at 4 230, an increase when compared to 3 655 pigs slaughtered in the previous month.

Table 1. Number of livestock marketed ('000)

Year	Month	Cattle export abattoirs & butchers	Cattle live exported South Africa & Angola	Small stock Export abattoirs and butchers	Live small stock South Africa and Angola	Pigs slaughtered	Total Livestock Marketed
2020	Jan	6	10	11	11	4	42
	Feb	6	21	11	18	3	61
	Mar	8	18	15	32	4	77
	Apr	8	10	28	34	4	83
	May	13	6	14	36	3	73
	Jun	10	10	13	38	4	74
	Jul	8	19	11	29	4	71
	Aug	6	16	9	22	4	55
	Sep	5	15	10	16	4	50
	Oct	7	13	11	17	4	52
	Nov	8	11	10	25	4	58
	Dec	6	10	11	29	4	60
2021	Jan	4	7	9	7	3	30
	Feb	5	8	11	21	4	49
	Mar	8	11	12	42	4	77
	Apr	8	10	14	41	4	77
	May	8	10	10	54	4	86
	Jun	9	12	11	52	4	88
	Jul	10	14	10	33	4	72
	Aug	9	15	10	25	4	63
	Sep	7	15	10	21	4	57
	Oct	8	13	5	27	4	56
	Nov	6	13	7	29	4	58
	Dec	5	10	5	39	4	62

Table 1. Number of livestock marketed ('000) cont...

Year	Month	Cattle export abattoirs & butchers	Cattle live exported South Africa & Angola	Small stock Export abattoirs and butchers	Live small stock South Africa and Angola	Pigs slaughtered	Total Livestock Marketed
2022	Jan	8	8	7	20	4	46
	Feb	8	10	7	32	3	61
	Mar	8	11	10	58	4	91
	Apr	12	10	29	66	4	121
	May	10	14	12	73	4	113
	Jun	12	14	16	75	4	121
	Jul	10	16	13	58	3	99
	Aug	8	10	12	34	5	70
	Sep	9	10	12	30	4	64
	Oct	9	16	12	32	4	72
	Nov	9	13	14	40	4	80
	Dec	9	8	19	43	4	83
2023	Jan	8	10	11	21	4	54
	Feb	8	8	16	40	4	75
	Mar	12	12	25	77	4	131
	Apr	11	13	20	89	4	136
	May	12	11	19	80	4	127

Table 2: Indices of Livestock marketed

Year	Month	Cattle export abattoirs & butchers	Cattle Live export on hoof	Small stock Export abattoirs and butchers	Live small stock South Africa and Angola	Pigs slaughtered	Composite Index
2020	Jan	60.6	46.6	24.9	23.6	118.7	51.3
	Feb	65.1	99.8	26.2	38.4	109.9	74.1
	Mar	82.2	82.7	33.8	67.3	126.1	78.7
	Apr	79.5	48.1	63.0	70.3	124.5	67.2
	May	133.1	28.7	31.0	75.8	105.3	80.3
	Jun	97.3	46.9	29.9	78.8	120.6	72.4
	Jul	78.4	89.6	25.0	60.5	128.9	78.4
	Aug	56.4	73.3	19.9	45.1	112.7	60.7
	Sep	54.8	68.7	22.6	34.1	119.2	57.7
	Oct	74.2	59.9	24.9	36.0	117.1	63.1
	Nov	78.5	53.8	22.4	52.1	115.2	63.8
	Dec	62.9	45.4	24.4	61.3	132.9	55.5
2021	Jan	43.2	32.0	20.4	14.7	105.5	36.8
	Feb	54.3	36.2	25.5	44.6	116.5	46.4
	Mar	78.6	52.1	27.3	87.5	132.6	67.2
	Apr	84.0	45.7	32.5	84.5	116.9	66.8
	May	80.7	47.9	23.6	112.9	114.9	67.9
	Jun	92.2	56.5	26.0	108.3	112.5	75.7
	Jul	105.2	65.7	23.2	69.4	120.1	81.4
	Aug	95.4	68.9	22.8	52.1	122.2	77.0
	Sep	75.3	70.2	22.0	43.5	121.1	67.9
	Oct	79.6	59.7	11.3	57.0	113.2	65.9
	Nov	59.6	61.4	15.4	60.0	119.1	58.7
	Dec	48.5	44.6	10.5	81.0	135.6	49.7

Table 2: Indices of Livestock marketed cont....

Year	Month	Cattle export abattoirs & butchers	Cattle Live export on hoof	Small stock Export abattoirs and butchers	Live small stock South Africa and Angola	Pigs slaughtered	Composite Index
2022	Jan	78.2	38.9	15.4	40.9	115.0	56.6
	Feb	81.3	47.0	16.8	67.2	110.1	63.2
	Mar	83.8	49.9	23.7	121.4	123.6	71.0
	Apr	124.6	47.3	67.0	136.6	128.4	92.4
	May	101.2	65.1	28.3	151.4	129.7	87.3
	Jun	118.0	67.0	35.9	156.2	122.5	96.0
	Jul	96.6	73.1	30.3	120.3	102.9	84.9
	Aug	79.1	48.6	28.3	71.8	146.2	65.3
	Sep	86.0	46.0	28.4	62.0	117.8	65.5
	Oct	86.7	73.4	27.1	67.4	122.5	76.6
	Nov	94.2	60.5	32.2	82.9	139.4	77.3
	Dec	89.0	37.6	43.6	90.3	119.2	67.4
2023	Jan	76.3	46.1	25.9	44.3	120.9	59.8
	Feb	80.2	39.1	35.5	83.0	117.4	62.8
	Mar	124.8	58.4	56.6	161.1	116.1	97.6
	Apr	110.1	61.5	45.1	185.4	116.5	93.6
	May	120.9	52.4	42.9	167.5	134.9	93.7

- Data Sources** : The data was obtained from the Meat Board of Namibia.
- Base year** : Livestock Sectoral report is harmonized with the quarterly and annual national accounts base year 2015.
- Calculations of index** : The index is calculated based on the 2015 base year volumes and 2015 weights. The index is the magnitude of the volume. Changes over time, with reference to the volume of the base year 2015. The index is calculated as a ratio of the volume of a specific component in a specific month to the total volume of that component in 2015.
- Conversion** : 1 basis point = 0.01 percent