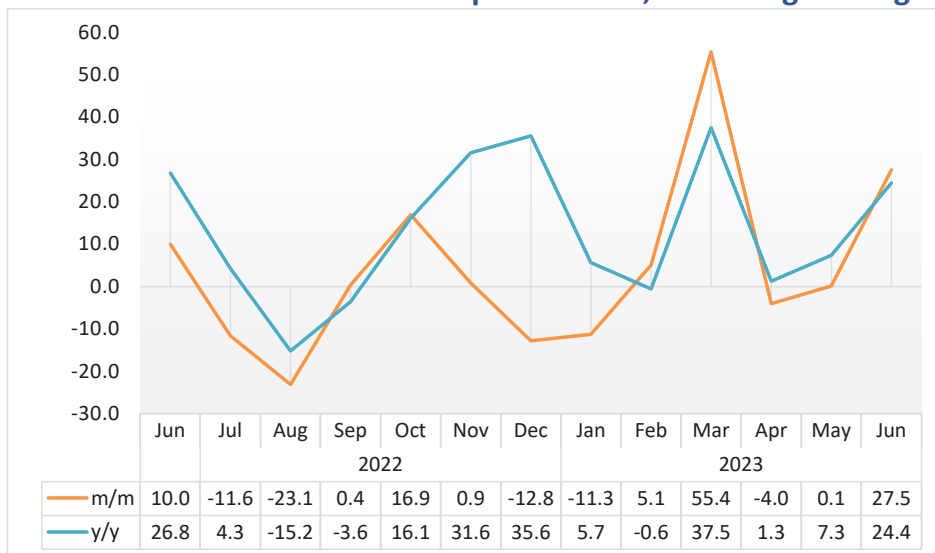


LIVESTOCK

June 2023

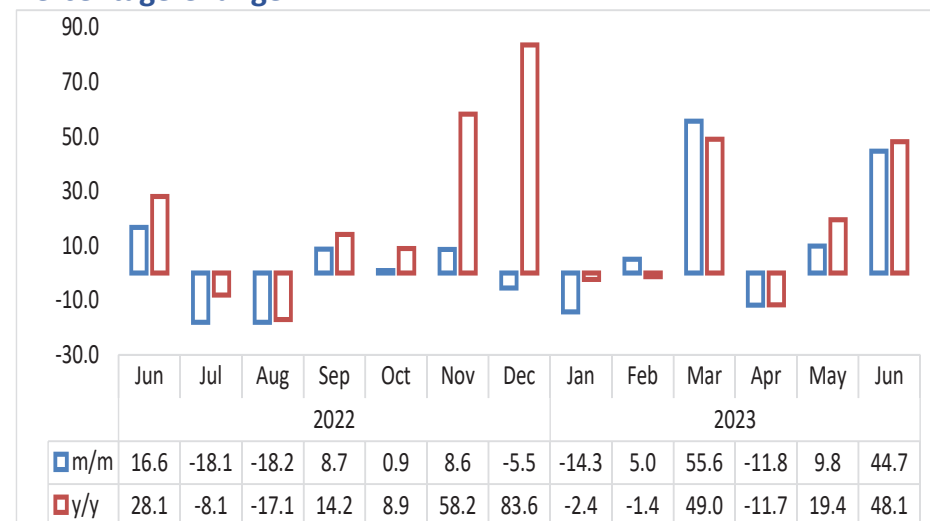


Chart 1: Livestock Marketed Composite Index, Percentage Change



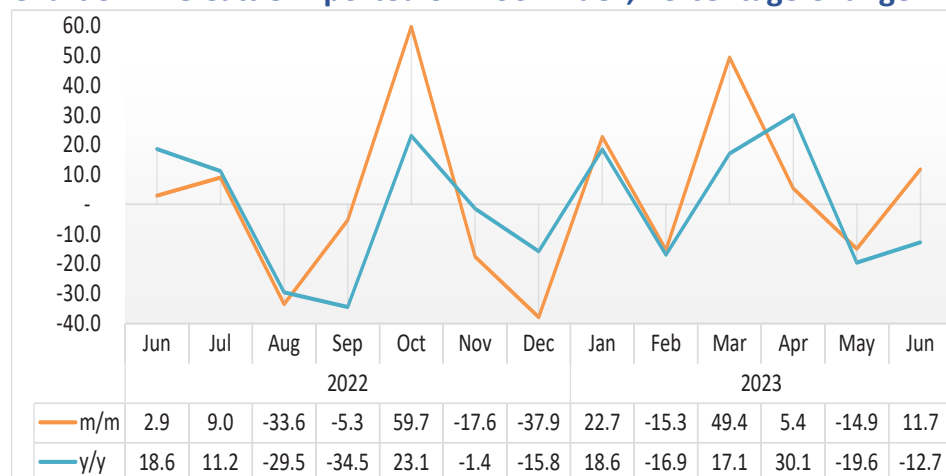
- The **Livestock Marketed Composite Index** increased by 27.5 percent on a monthly basis in June 2023 from a growth of 0.1 percent recorded in May 2023. Additionally, the index recorded a growth of 24.4 percent year-on-year.
- The total number of livestock marketed during June 2023 amounted to 137 584 animals from 126 569 animals and 120 556 animals that were marketed in May 2023 and June 2022, respectively.

Chart 2: Cattle Export Approved Abattoirs and Butchers Index, Percentage Change



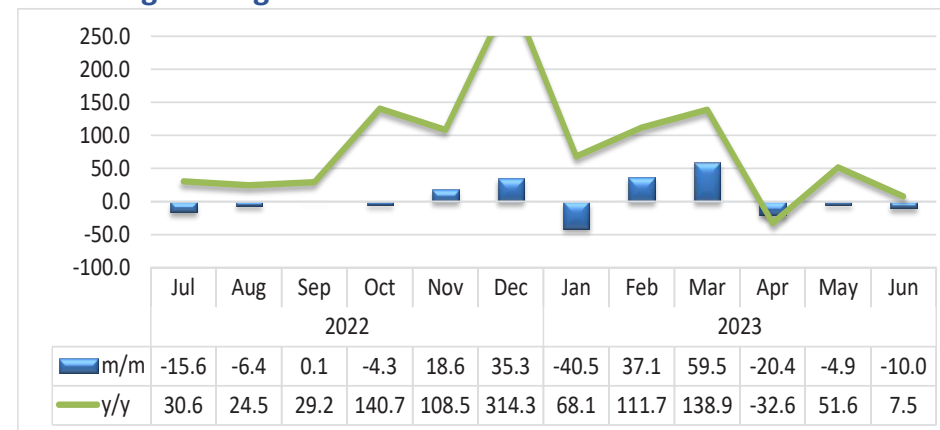
- The **Cattle Export Approved Abattoirs and Butchers Index** in June 2023 recorded a monthly increase of 44.7 compared to an increase of 9.8 percent recorded in May 2023. On annual basis, the index recorded a growth of 48.1 percent.
- The total number of cattle marketed to export approved abattoirs and butchers stood at 17 366 in June 2023 compared to 12 005 cattle noted in May 2023 and 11 722 cattle registered in parallel month of 2022.

Chart 3: Live Cattle Exported on Hoof Index, Percentage Change



- The **Index for the Export of Live Cattle on Hoof** increased by 11.7 percent on a monthly basis in June 2023, contrast to a decline of 14.9 percent recorded in the preceding month. Conversely, the index declined by 12.7 percent year-on-year.
- During the review period, the total number of live cattle exported on hoof stood at 12 482 cattle compared to 11 171 cattle and 14 301 cattle registered in May 2023 and in the corresponding month of 2022, respectively. The main export market for live cattle on hoof was South Africa (99.9%).

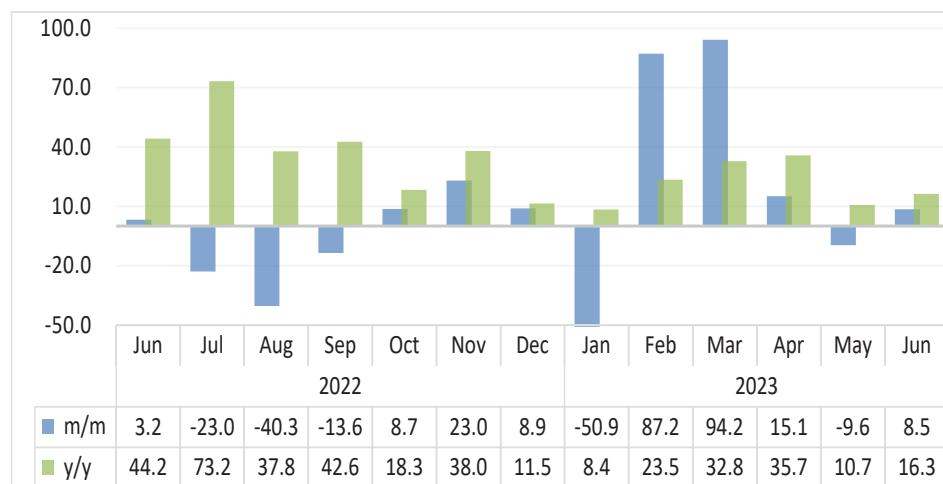
Chart 4: Small Stock Export Approved Abattoirs and Butchers Index, Percentage Change¹



- During the month under review, the **Small Stock Export Approved Abattoirs and Butchers Index** declined by 10.0 percent on a monthly basis compared to a decline of 4.9 percent registered in May 2023. However, the index recorded a growth of 7.5 percent year-on-year.
- A total of 16 857 small stock were marketed through export-approved abattoirs and butchers in June 2023, of which 16 849 small stocks were sourced from South of the Veterinary Cordon Fence (S-VCF), while only 8 small stocks were sourced from North of the Veterinary Cordon Fence (N-VCF).

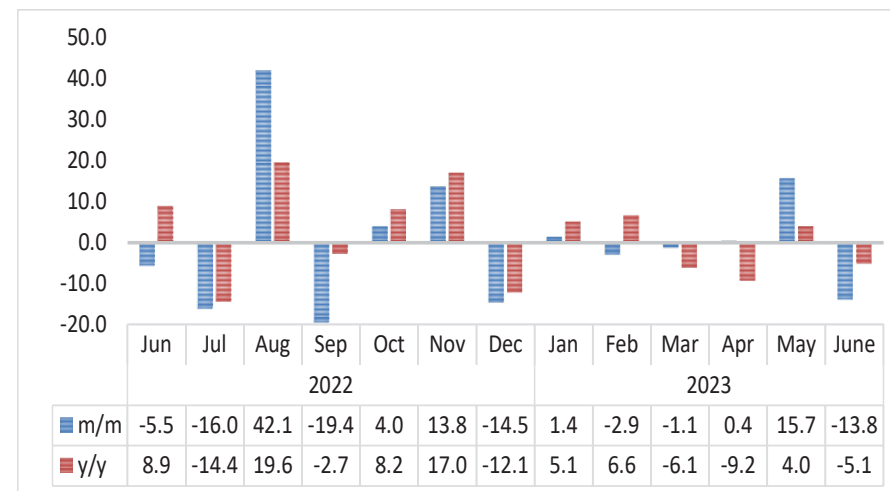
¹ This chart is limited to -100 percent and 250 percent for better presentation.

Chart 5: Live Small Stock Export, Percentage Change



- The **Index for the Export of Live Small Stock** registered in June 2023 increased by 8.5 percent on a monthly basis in contrast to a decline of 9.6 percent posted in the preceding month. Moreover, the index recorded grew by 16.3 year-on-year.
- During the review period, 87 233 small stocks were exported live. Sheep accounted for the largest share of 81.8 percent, whilst goats accounted for 18.2 percent of the total export share of live small stock.

Chart 6: Pigs Index, Percentage Change



- The **Index for Pigs** declined by 13.8 percent on a monthly basis in June 2023 in contrast to a growth of 15.7 percent recorded in May 2023. Similarly, the index declined by 5.1 percent on an annual basis.
- The number of pigs slaughtered locally in June 2023 declined to 3 646 pigs, from 4 230 pigs and 3 843 pigs noted a month earlier and in the corresponding month of 2022, respectively.

Table 1. Number of livestock marketed ('000)

Year	Month	Cattle export abattoirs & butchers	Cattle live exported South Africa & Angola	Small stock Export abattoirs and butchers	Live small stock South Africa and Angola	Pigs slaughtered	Total Livestock Marketed
2020	Jan	6	10	11	11	4	42
	Feb	6	21	11	18	3	61
	Mar	8	18	15	32	4	77
	Apr	8	10	28	34	4	83
	May	13	6	14	36	3	73
	Jun	10	10	13	38	4	74
	Jul	8	19	11	29	4	71
	Aug	6	16	9	22	4	55
	Sep	5	15	10	16	4	50
	Oct	7	13	11	17	4	52
	Nov	8	11	10	25	4	58
	Dec	6	10	11	29	4	60
2021	Jan	4	7	9	7	3	30
	Feb	5	8	11	21	4	49
	Mar	8	11	12	42	4	77
	Apr	8	10	14	41	4	77
	May	8	10	10	54	4	86
	Jun	9	12	11	52	4	88
	Jul	10	14	10	33	4	72
	Aug	9	15	10	25	4	63
	Sep	7	15	10	21	4	57
	Oct	8	13	5	27	4	56
	Nov	6	13	7	29	4	58
	Dec	5	10	5	39	4	62

Table 1. Number of livestock marketed ('000) cont...

Year	Month	Cattle export abattoirs & butchers	Cattle live exported South Africa & Angola	Small stock Export abattoirs and butchers	Live small stock South Africa and Angola	Pigs slaughtered	Total Livestock Marketed
2022	Jan	8	8	7	20	4	46
	Feb	8	10	7	32	3	61
	Mar	8	11	10	58	4	91
	Apr	12	10	29	66	4	121
	May	10	14	12	73	4	113
	Jun	12	14	16	75	4	121
	Jul	10	16	13	58	3	99
	Aug	8	10	12	34	5	70
	Sep	9	10	12	30	4	64
	Oct	9	16	12	32	4	72
	Nov	9	13	14	40	4	80
	Dec	9	8	19	43	4	83
2023	Jan	8	10	11	21	4	54
	Feb	8	8	16	40	4	75
	Mar	12	12	25	77	4	131
	Apr	11	13	20	89	4	136
	May	12	11	19	80	4	127
	June	17	12	17	87	4	138

Table 2: Indices of Livestock marketed

Year	Month	Cattle export abattoirs & butchers	Cattle Live export on hoof	Small stock Export abattoirs and butchers	Live small stock South Africa and Angola	Pigs slaughtered	Composite Index
2020	Jan	60.6	46.6	24.9	23.6	118.7	51.3
	Feb	65.1	99.8	26.2	38.4	109.9	74.1
	Mar	82.2	82.7	33.8	67.3	126.1	78.7
	Apr	79.5	48.1	63.0	70.3	124.5	67.2
	May	133.1	28.7	31.0	75.8	105.3	80.3
	Jun	97.3	46.9	29.9	78.8	120.6	72.4
	Jul	78.4	89.6	25.0	60.5	128.9	78.4
	Aug	56.4	73.3	19.9	45.1	112.7	60.7
	Sep	54.8	68.7	22.6	34.1	119.2	57.7
	Oct	74.2	59.9	24.9	36.0	117.1	63.1
	Nov	78.5	53.8	22.4	52.1	115.2	63.8
	Dec	62.9	45.4	24.4	61.3	132.9	55.5
2021	Jan	43.2	32.0	20.4	14.7	105.5	36.8
	Feb	54.3	36.2	25.5	44.6	116.5	46.4
	Mar	78.6	52.1	27.3	87.5	132.6	67.2
	Apr	84.0	45.7	32.5	84.5	116.9	66.8
	May	80.7	47.9	23.6	112.9	114.9	67.9
	Jun	92.2	56.5	26.0	108.3	112.5	75.7
	Jul	105.2	65.7	23.2	69.4	120.1	81.4
	Aug	95.4	68.9	22.8	52.1	122.2	77.0
	Sep	75.3	70.2	22.0	43.5	121.1	67.9
	Oct	79.6	59.7	11.3	57.0	113.2	65.9
	Nov	59.6	61.4	15.4	60.0	119.1	58.7
	Dec	48.5	44.6	10.5	81.0	135.6	49.7

Table 2: Indices of Livestock marketed cont....

Year	Month	Cattle export abattoirs & butchers	Cattle Live export on hoof	Small stock Export abattoirs and butchers	Live small stock South Africa and Angola	Pigs slaughtered	Composite Index
2022	Jan	78.2	38.9	15.4	40.9	115.0	56.6
	Feb	81.3	47.0	16.8	67.2	110.1	63.2
	Mar	83.8	49.9	23.7	121.4	123.6	71.0
	Apr	124.6	47.3	67.0	136.6	128.4	92.4
	May	101.2	65.1	28.3	151.4	129.7	87.3
	Jun	118.0	67.0	35.9	156.2	122.5	96.0
	Jul	96.6	73.1	30.3	120.3	102.9	84.9
	Aug	79.1	48.6	28.3	71.8	146.2	65.3
	Sep	86.0	46.0	28.4	62.0	117.8	65.5
	Oct	86.7	73.4	27.1	67.4	122.5	76.6
	Nov	94.2	60.5	32.2	82.9	139.4	77.3
	Dec	89.0	37.6	43.6	90.3	119.2	67.4
2023	Jan	76.3	46.1	25.9	44.3	120.9	59.8
	Feb	80.2	39.1	35.5	83.0	117.4	62.8
	Mar	124.8	58.4	56.6	161.1	116.1	97.6
	Apr	110.1	61.5	45.1	185.4	116.5	93.6
	May	120.9	52.4	42.9	167.5	134.9	93.7
	June	174.9	58.5	38.6	181.7	116.2	119.5

- Data Sources** : The data was obtained from the Meat Board of Namibia.
- Base year** : Livestock Sectoral report is harmonized with the quarterly and annual national accounts base year 2015.
- Calculations of index** : The index is calculated based on the 2015 base year volumes and 2015 weights. The index is the magnitude of the volume. Changes over time, with reference to the volume of the base year 2015. The index is calculated as a ratio of the volume of a specific component in a specific month to the total volume of that component in 2015.
- Conversion** : 1 basis point = 0.01 percent