



Namibia Statistics
Agency

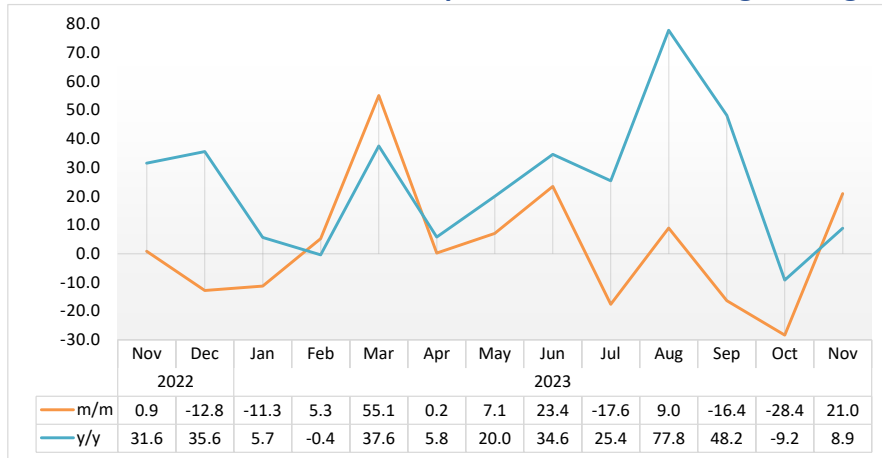


LIVESTOCK

November 2023

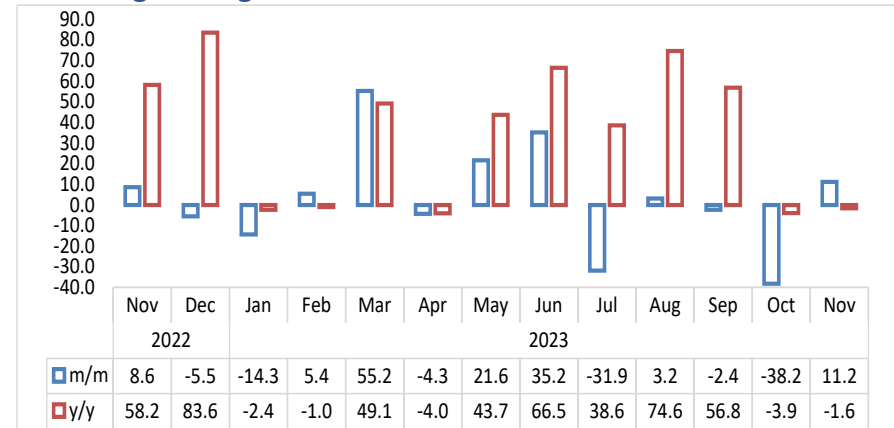


Chart 1: Livestock Marketed Composite Index, Percentage Change



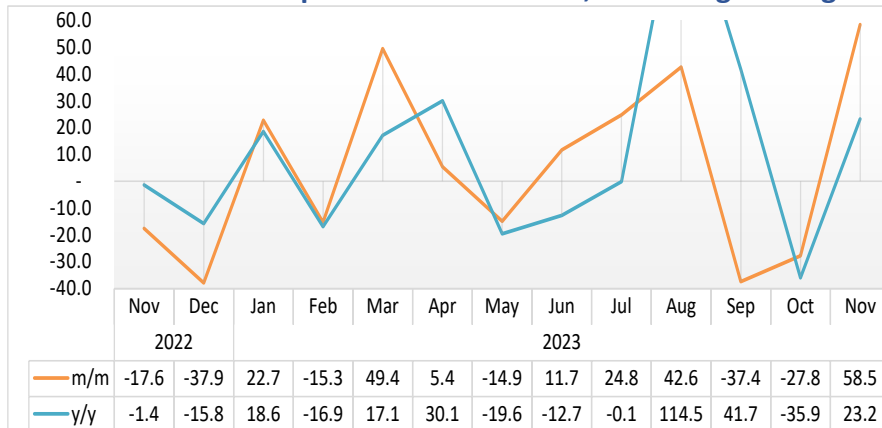
- In November 2023, the **Livestock Marketed Composite Index** rebounded on a monthly basis recording an increase of 21.0 percent in contrast to a decline of 28.4 percent registered a month earlier. Additionally, the index grew by 8.9 percent year-on-year (Chart 1).
- In absolute terms, the total number of livestock marketed during the month of November 2023 increased to 98 433 animals, from 89 277 animals recorded in the preceding month and 80 470 animals that were marketed in the corresponding month of 2022.

Chart 2: Cattle Export Approved Abattoirs and Butchers Index, Percentage Change



- The **Cattle Export-Approved Abattoirs and Butchers Index** increased in November 2023, recording a monthly growth of 11.2 percent as opposed to a reduction of 38.2 percent noted in the preceding month. On the other hand, the index recorded a decline of 1.6 percent on an annual basis (Chart 2).
- The number of cattle marketed to export approved abattoirs and butchers in November 2023 stood at 9 204 compared to 8 277 cattle registered in October 2023, while 9 357 cattle were recorded in the corresponding month of 2022.

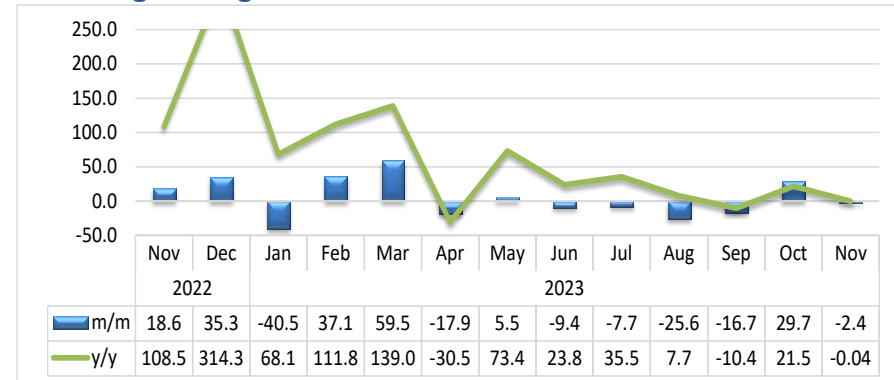
Chart 3: Live Cattle Exported on Hoof Index, Percentage Change¹



- During the period under review, the **Index for the Live Cattle Exported on Hoof** on a monthly basis increased by 58.5 percent, in contrast to a decrease of 27.8 percent posted in the previous month. Additionally, the index grew by 23.2 percent year-on-year (Chart 3).
- During the period under review, the number of live cattle exported on hoof amounted to 15 902 cattle, as opposed to 10 035 cattle and 12 908 cattle registered in October 2023 and in the corresponding month of 2022, respectively.

¹ This chart is limited to 60 percent for better presentation.

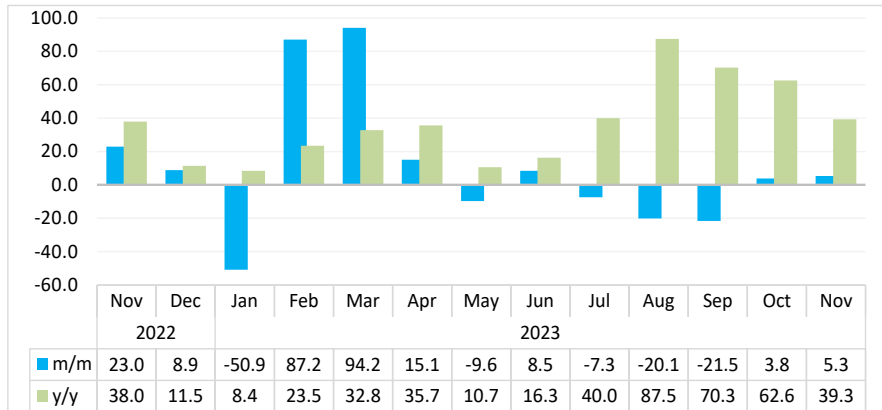
Chart 4: Small Stock Export Approved Abattoirs and Butchers Index, Percentage Change²



- During the period under review, the **Small Stock Export-Approved Abattoirs and Butchers Index** declined by 2.4 percent on a monthly basis, in contrast to a growth of 29.7 percent registered in October 2023. Similarly, the index recorded a marginal decline of 0.04 percent year-on-year (Chart 4).
- In absolute terms, 14 044 small stock were marketed through export-approved abattoirs and butchers in November 2023, of which 13 983 were sourced from South of the Veterinary Cordon Fence (S-VCF), while only 61 small stock were sourced from North of the Veterinary Cordon Fence (N-VCF).

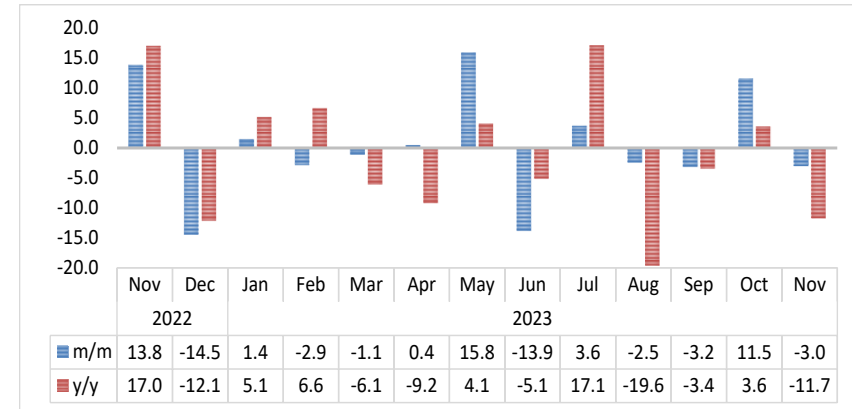
² This chart is limited to 250 percent for better presentation.

Chart 5: Live Small Stock Export, Percentage Change



- During November 2023, the **Index for the Export of Live Small Stock** grew by 5.3 percent on a monthly basis, relative to an increase of 3.8 percent witnessed in the preceding month. Moreover, the index recorded an increase of 39.3 percent year-on-year (Chart 5).
- During the month under review, 55 424 small stock was exported live. Sheep accounted for the largest share of 77.7 percent, whereas goats accounted for 22.3 percent of the total export of live small stock.

Chart 6: Pigs Index, Percentage Change



- On a monthly basis, the **Index for Pigs** for November 2023 declined by 3.0 percent, in contrast to a growth of 11.5 percent witnessed in the previous month. Moreover, the index reduced by 11.7 percent on an annual basis (Chart 6).
- The number of pigs slaughtered locally in November 2023 decreased to 3 859 pigs, downward from 3 979 pigs and 4 371 pigs recorded in October 2023 and in the corresponding month of 2022, respectively.

Table 1: Number of livestock marketed ('000)

Year	Month	Cattle export abattoirs & butchers	Cattle live exported South Africa & Angola	Small stock Export abattoirs and butchers	Total live small stock exported South Africa and Angola	Pigs slaughtered	Total Livestock Marketed
2020	Jan	6	10	11	11	4	42
	Feb	6	21	11	18	3	61
	Mar	8	18	15	32	4	77
	Apr	8	10	28	34	4	83
	May	13	6	14	36	3	73
	Jun	10	10	13	38	4	74
	Jul	8	19	11	29	4	71
	Aug	6	16	9	22	4	55
	Sep	5	15	10	16	4	50
	Oct	7	13	11	17	4	52
	Nov	8	11	10	25	4	58
	Dec	6	10	11	29	4	60
2021	Jan	4	7	9	7	3	30
	Feb	5	8	11	21	4	49
	Mar	8	11	12	42	4	77
	Apr	8	10	14	41	4	77
	May	8	10	10	54	4	86
	Jun	9	12	11	52	4	88
	Jul	10	14	10	33	4	72
	Aug	9	15	10	25	4	63
	Sep	7	15	10	21	4	57
	Oct	8	13	5	27	4	56
	Nov	6	13	7	29	4	58
	Dec	5	10	5	39	4	62

Table 1: Number of livestock marketed ('000) cont...

Year	Month	Cattle export abattoirs & butchers	Cattle live exported South Africa & Angola	Small stock Export abattoirs and butchers	Total live small stock exported South Africa and Angola	Pigs slaughtered	Total Livestock Marketed
2022	Jan	8	8	7	20	4	46
	Feb	8	10	7	32	3	61
	Mar	8	11	10	58	4	91
	Apr	12	10	29	66	4	121
	May	10	14	12	73	4	113
	Jun	12	14	16	75	4	121
	Jul	10	16	13	58	3	99
	Aug	8	10	12	34	5	70
	Sep	9	10	12	30	4	64
	Oct	9	16	12	32	4	72
	Nov	9	13	14	40	4	80
	Dec	9	8	19	43	4	83
2023	Jan	8	10	11	21	4	54
	Feb	8	8	16	40	4	75
	Mar	12	12	25	77	4	131
	Apr	12	13	20	89	4	138
	May	14	11	21	80	4	132
	Jun	20	12	19	87	4	142
	Jul	13	16	18	81	4	131
	Aug	14	22	13	65	4	118
	Sep	13	14	11	51	4	93
	Oct	8	10	14	53	4	89
	Nov	9	16	14	55	4	98

Table 2: Indices of Livestock marketed

Year	Month	Cattle export abattoirs & butchers	Cattle Live export on hoof	Small stock Export abattoirs and butchers	Total live small stock exported South Africa and Angola	Pigs slaughtered	Composite Index
2020	Jan	60.6	46.6	24.9	23.6	118.7	51.3
	Feb	65.1	99.8	26.2	38.4	109.9	74.1
	Mar	82.2	82.7	33.8	67.3	126.1	78.7
	Apr	79.5	48.1	63.0	70.3	124.5	67.2
	May	133.1	28.7	31.0	75.8	105.3	80.3
	Jun	97.3	46.9	29.9	78.8	120.6	72.4
	Jul	78.4	89.6	25.0	60.5	128.9	78.4
	Aug	56.4	73.3	19.9	45.1	112.7	60.7
	Sep	54.8	68.7	22.6	34.1	119.2	57.7
	Oct	74.2	59.9	24.9	36.0	117.1	63.1
	Nov	78.5	53.8	22.4	52.1	115.2	63.8
	Dec	62.9	45.4	24.4	61.3	132.9	55.5
2021	Jan	43.2	32.0	20.4	14.7	105.5	36.8
	Feb	54.3	36.2	25.5	44.6	116.5	46.4
	Mar	78.6	52.1	27.3	87.5	132.6	67.2
	Apr	84.0	45.7	32.5	84.5	116.9	66.8
	May	80.7	47.9	23.6	112.9	114.9	67.9
	Jun	92.2	56.5	26.0	108.3	112.5	75.7
	Jul	105.2	65.7	23.2	69.4	120.1	81.4
	Aug	95.4	68.9	22.8	52.1	122.2	77.0
	Sep	75.3	70.2	22.0	43.5	121.1	67.9
	Oct	79.6	59.7	11.3	57.0	113.2	65.9
	Nov	59.6	61.4	15.4	60.0	119.1	58.7
	Dec	48.5	44.6	10.5	81.0	135.6	49.7

Table 2: Indices of Livestock marketed cont....

Year	Month	Cattle export abattoirs & butchers	Cattle Live export on hoof	Small stock Export abattoirs and butchers	Total live small stock exported South Africa and Angola	Pigs slaughtered	Composite Index
2022	Jan	78.2	38.9	15.4	40.9	115.0	56.6
	Feb	81.3	47.0	16.8	67.2	110.1	63.2
	Mar	83.8	49.9	23.7	121.4	123.6	71.0
	Apr	124.6	47.3	67.0	136.6	128.4	92.4
	May	101.2	65.1	28.3	151.4	129.7	87.3
	Jun	118.0	67.0	35.9	156.2	122.5	96.0
	Jul	96.6	73.1	30.3	120.3	102.9	84.9
	Aug	79.1	48.6	28.3	71.8	146.2	65.3
	Sep	86.0	46.0	28.4	62.0	117.8	65.5
	Oct	86.7	73.4	27.1	67.4	122.5	76.6
	Nov	94.2	60.5	32.2	82.9	139.4	77.3
	Dec	89.0	37.6	43.6	90.3	119.2	67.4
2023	Jan	76.3	46.1	25.9	44.3	120.9	59.8
	Feb	80.5	39.1	35.5	83.0	117.4	62.9
	Mar	124.9	58.4	56.6	161.1	116.1	97.6
	Apr	119.6	61.5	46.5	185.4	116.5	97.8
	May	145.4	52.4	49.1	167.5	135.0	104.7
	Jun	196.6	58.5	44.4	181.7	116.2	129.3
	Jul	133.9	73.0	41.0	168.4	120.5	106.5
	Aug	138.1	104.1	30.5	134.6	117.5	116.0
	Sep	134.8	65.2	25.4	105.6	113.8	97.1
	Oct	83.4	47.0	33.0	109.6	126.9	69.5
	Nov	92.7	74.5	32.2	115.4	123.0	84.1

- Data Sources** : The data was obtained from the Meat Board of Namibia.
- Base year** : Livestock Sectoral report is harmonized with the quarterly and annual national accounts base year 2015.
- Calculations of index** : The index is calculated based on the 2015 base year volumes and 2015 weights. The index is the magnitude of the volume. Changes over time, with reference to the volume of the base year 2015. The index is calculated as a ratio of the volume of a specific component in a specific month to the total volume of that component in 2015.
- Conversion** : 1 basis point = 0.01 percent