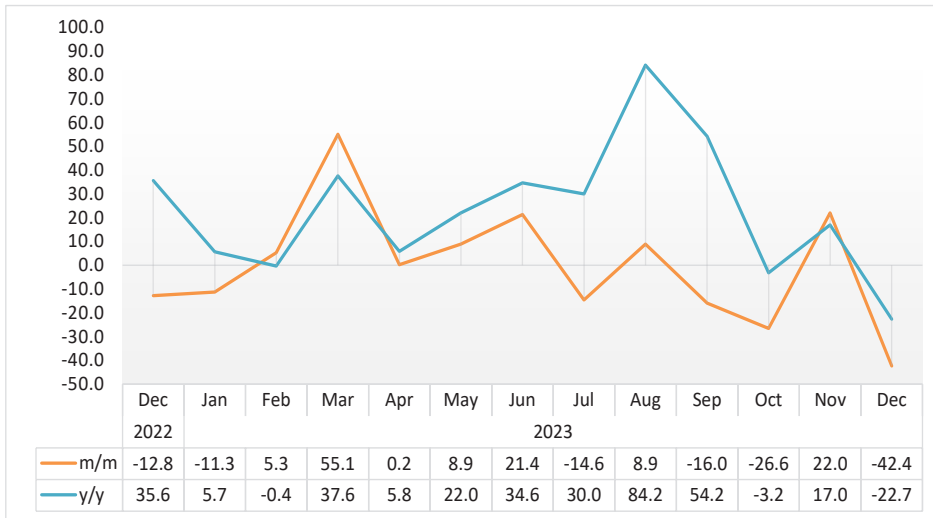


LIVESTOCK

DECEMBER 2023

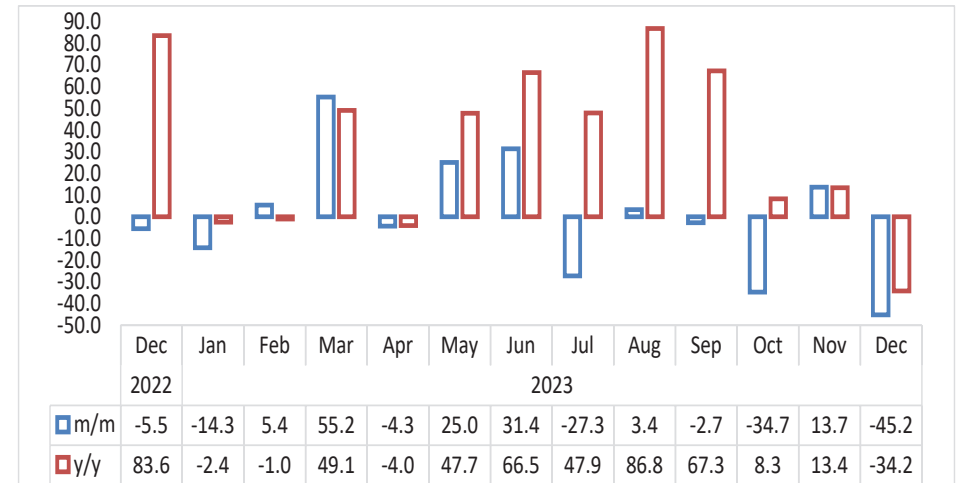


Chart 1: Livestock Marketed Composite Index, Percentage Change



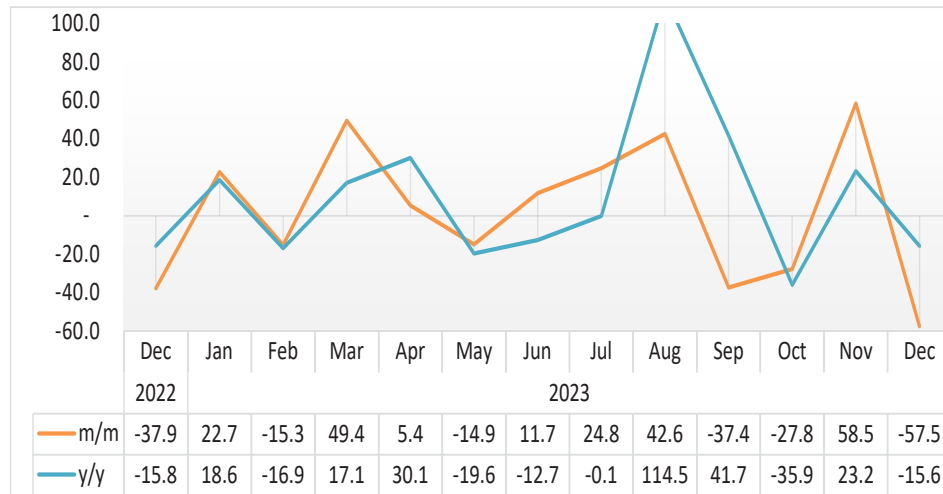
- In December 2023, the **Livestock Marketed Composite Index** declined by 42.4 percent on a monthly basis, in contrast to an increase of 22.0 percent witnessed in the preceding month. Additionally, the index decreased by 22.7 percent year-on-year (Chart 1).
- In absolute terms, the total number of livestock marketed during December 2023 reduced to 77 891 animals, from 100 793 animals recorded in the preceding month and 82 945 animals that were marketed in the corresponding month of 2022.

Chart 2: Cattle Export Approved Abattoirs and Butchers Index, Percentage Change



- The **Cattle Export-Approved Abattoirs and Butchers Index** in December 2023 declined by 45.2 percent on a monthly basis in contrast to a growth of 13.7 percent noted in the previous month. Furthermore, the index recorded a decline of 34.2 percent on an annual basis (Chart 2).
- The total number of cattle marketed to export approved abattoirs and butchers during December 2023 stood at 5 817 compared to 10 610 cattle that was registered in November 2023, while 8 842 cattle were marketed in the corresponding month of 2022.

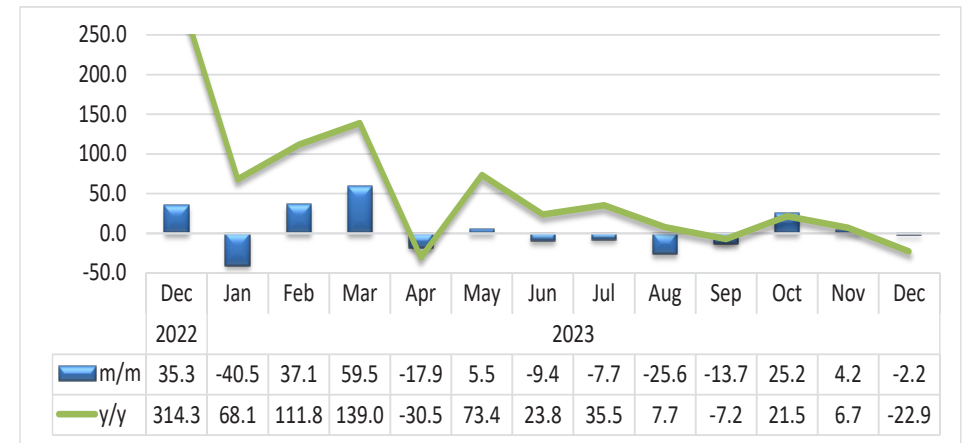
Chart 3: Live Cattle Exported on Hoof Index, Percentage Change¹



- During the period under review, the **Index for the Live Cattle Exported on Hoof** decreased by 57.5 percent on a monthly basis, as opposed to a growth of 58.5 percent posted in the preceding month. Additionally, the index declined by 15.6 percent year-on-year (Chart 3).
- During the period under review, the total number of live cattle exported on hoof amounted to 6 764 cattle, as opposed to 15 902 cattle and 8 018 cattle registered in November 2023 and in the corresponding month of 2022, respectively.

¹ This chart is limited to 100 percent for better presentation.

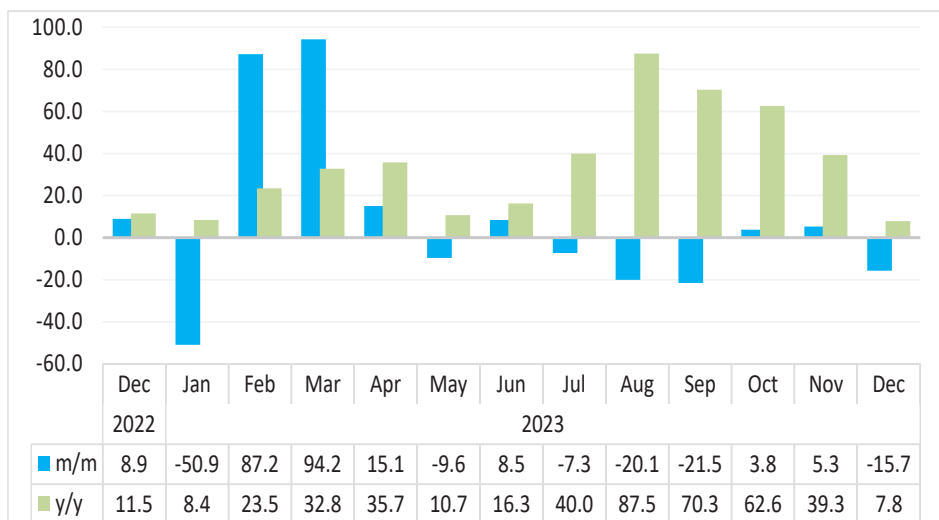
Chart 4: Small Stock Export Approved Abattoirs and Butchers Index, Percentage Change²



- During the period under review, the **Small Stock Export-Approved Abattoirs and Butchers Index** declined by 2.2 percent on a monthly basis, in contrast to an increase of 4.2 percent registered in November 2023. Moreover, the index recorded a decrease of 22.9 percent year-on-year (Chart 4).
- In absolute terms, a total of 14 667 small stock were marketed through export approved abattoirs and butchers during December 2023, of which 14 662 were sourced from South of the Veterinary Cordon Fence (S-VCF), while only 5 small stock were sourced from North of the Veterinary Cordon Fence (N-VCF).

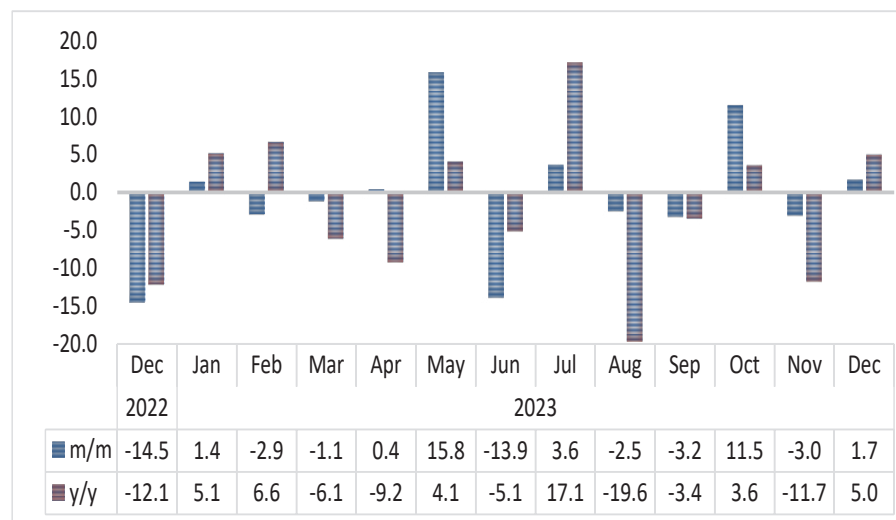
² This chart is limited to 250 percent for better presentation.

Chart 5: Live Small Stock Export, Percentage Change



- During December 2023, the **Index for the Export of Live Small Stock** declined by 15.7 percent on a monthly basis as opposed to a growth of 5.3 percent witnessed a month earlier. Conversely, the index recorded an increase of 7.8 percent year-on-year (Chart 5).
- During the month under review, 46 719 small stock was exported live of which sheep accounted for a share of 62.1 percent, whereas goats accounted for 37.9 percent of the total export of live small stock.

Chart 6: Pigs Index, Percentage Change



- On a monthly basis, the **Index for Pigs** during December 2023 grew by 1.7 percent, in contrast to a decline of 3.0 percent noted in the preceding month. Moreover, the index increased by 5.0 percent on an annual basis (Chart 6).
- The number of pigs slaughtered locally during December 2023 increased to 3 924 pigs, upward from 3 859 pigs and 3 738 pigs that were slaughtered in November 2023 and in the corresponding month of 2022, respectively.

Table 1: Number of livestock marketed ('000)

Year	Month	Cattle export abattoirs & butchers	Cattle live exported South Africa & Angola	Small stock Export abattoirs and butchers	Total live small stock exported South Africa and Angola	Pigs slaughtered	Total Livestock Marketed
2020	Jan	6	10	11	11	4	42
	Feb	6	21	11	18	3	61
	Mar	8	18	15	32	4	77
	Apr	8	10	28	34	4	83
	May	13	6	14	36	3	73
	Jun	10	10	13	38	4	74
	Jul	8	19	11	29	4	71
	Aug	6	16	9	22	4	55
	Sep	5	15	10	16	4	50
	Oct	7	13	11	17	4	52
	Nov	8	11	10	25	4	58
	Dec	6	10	11	29	4	60
2021	Jan	4	7	9	7	3	30
	Feb	5	8	11	21	4	49
	Mar	8	11	12	42	4	77
	Apr	8	10	14	41	4	77
	May	8	10	10	54	4	86
	Jun	9	12	11	52	4	88
	Jul	10	14	10	33	4	72
	Aug	9	15	10	25	4	63
	Sep	7	15	10	21	4	57
	Oct	8	13	5	27	4	56
	Nov	6	13	7	29	4	58
	Dec	5	10	5	39	4	62

Table 1: Number of livestock marketed ('000) cont...

Year	Month	Cattle export abattoirs & butchers	Cattle live exported South Africa & Angola	Small stock Export abattoirs and butchers	Total live small stock exported South Africa and Angola	Pigs slaughtered	Total Livestock Marketed
2022	Jan	8	8	7	20	4	46
	Feb	8	10	7	32	3	61
	Mar	8	11	10	58	4	91
	Apr	12	10	29	66	4	121
	May	10	14	12	73	4	113
	Jun	12	14	16	75	4	121
	Jul	10	16	13	58	3	99
	Aug	8	10	12	34	5	70
	Sep	9	10	12	30	4	64
	Oct	9	16	12	32	4	72
	Nov	9	13	14	40	4	80
	Dec	9	8	19	43	4	83
2023	Jan	8	10	11	21	4	54
	Feb	8	8	16	40	4	75
	Mar	12	12	25	77	4	131
	Apr	12	13	20	89	4	138
	May	15	11	21	80	4	132
	Jun	20	12	19	87	4	142
	Jul	14	16	18	81	4	132
	Aug	15	22	13	65	4	119
	Sep	14	14	11	51	4	94
	Oct	9	10	14	53	4	90
	Nov	11	16	15	55	4	101
	Dec	6	7	15	47	4	78

Table 2: Indices of Livestock marketed

Year	Month	Cattle export abattoirs & butchers	Cattle Live export on hoof	Small stock Export abattoirs and butchers	Total live small stock exported South Africa and Angola	Pigs slaughtered	Composite Index
2020	Jan	60.6	46.6	24.9	23.6	118.7	51.3
	Feb	65.1	99.8	26.2	38.4	109.9	74.1
	Mar	82.2	82.7	33.8	67.3	126.1	78.7
	Apr	79.5	48.1	63.0	70.3	124.5	67.2
	May	133.1	28.7	31.0	75.8	105.3	80.3
	Jun	97.3	46.9	29.9	78.8	120.6	72.4
	Jul	78.4	89.6	25.0	60.5	128.9	78.4
	Aug	56.4	73.3	19.9	45.1	112.7	60.7
	Sep	54.8	68.7	22.6	34.1	119.2	57.7
	Oct	74.2	59.9	24.9	36.0	117.1	63.1
	Nov	78.5	53.8	22.4	52.1	115.2	63.8
	Dec	62.9	45.4	24.4	61.3	132.9	55.5
2021	Jan	43.2	32.0	20.4	14.7	105.5	36.8
	Feb	54.3	36.2	25.5	44.6	116.5	46.4
	Mar	78.6	52.1	27.3	87.5	132.6	67.2
	Apr	84.0	45.7	32.5	84.5	116.9	66.8
	May	80.7	47.9	23.6	112.9	114.9	67.9
	Jun	92.2	56.5	26.0	108.3	112.5	75.7
	Jul	105.2	65.7	23.2	69.4	120.1	81.4
	Aug	95.4	68.9	22.8	52.1	122.2	77.0
	Sep	75.3	70.2	22.0	43.5	121.1	67.9
	Oct	79.6	59.7	11.3	57.0	113.2	65.9
	Nov	59.6	61.4	15.4	60.0	119.1	58.7
	Dec	48.5	44.6	10.5	81.0	135.6	49.7

Table 2: Indices of Livestock marketed cont....

Year	Month	Cattle export abattoirs & butchers	Cattle Live export on hoof	Small stock Export abattoirs and butchers	Total live small stock exported South Africa and Angola	Pigs slaughtered	Composite Index
2022	Jan	78.2	38.9	15.4	40.9	115.0	56.6
	Feb	81.3	47.0	16.8	67.2	110.1	63.2
	Mar	83.8	49.9	23.7	121.4	123.6	71.0
	Apr	124.6	47.3	67.0	136.6	128.4	92.4
	May	101.2	65.1	28.3	151.4	129.7	87.3
	Jun	118.0	67.0	35.9	156.2	122.5	96.0
	Jul	96.6	73.1	30.3	120.3	102.9	84.9
	Aug	79.1	48.6	28.3	71.8	146.2	65.3
	Sep	86.0	46.0	28.4	62.0	117.8	65.5
	Oct	86.7	73.4	27.1	67.4	122.5	76.6
	Nov	94.2	60.5	32.2	82.9	139.4	77.3
	Dec	89.0	37.6	43.6	90.3	119.2	67.4
2023	Jan	76.3	46.1	25.9	44.3	120.9	59.8
	Feb	80.5	39.1	35.5	83.0	117.4	62.9
	Mar	124.9	58.4	56.6	161.1	116.1	97.6
	Apr	119.6	61.5	46.5	185.4	116.5	97.8
	May	149.5	52.4	49.1	167.5	135.0	106.5
	Jun	196.6	58.5	44.4	181.7	116.2	129.3
	Jul	143.0	73.0	41.0	168.4	120.5	110.4
	Aug	147.8	104.1	30.5	134.6	117.5	120.2
	Sep	143.8	65.2	26.3	105.6	113.8	101.0
	Oct	94.0	47.0	33.0	109.6	126.9	74.1
	Nov	106.8	74.5	34.3	115.4	123.0	90.4
	Dec	58.6	31.7	33.6	97.3	125.1	52.1

- Data Sources** : The data was obtained from the Meat Board of Namibia.
- Base year** : Livestock Sectoral report is harmonized with the quarterly and annual national accounts base year 2015.
- Calculations of index** : The index is calculated based on the 2015 base year volumes and 2015 weights. The index is the magnitude of the volume. Changes over time, with reference to the volume of the base year 2015. The index is calculated as a ratio of the volume of a specific component in a specific month to the total volume of that component in 2015.
- Conversion** : 1 basis point = 0.01 percent