



GOVERNMENT WAGE INDEX

First Quarter of 2021

GOVERNMENT WAGE INDEX

First Quarter of 2021



Mission Statement

"Leveraging on partnerships and innovative technologies, to produce and disseminate relevant, quality, timely statistics and spatial data that are fit-for-purpose in accordance with international standards and best practice"

Vision Statement

"Be a high performance institution in quality statistics delivery"

Core Values

Integrity

Excellent Performance

Accuracy

Team Work

Accountability

Transparency



Preface

The Namibia Statistics Agency hereby presents the Government Wage Index (GWI) for Central Government. This publication outlines the first quarter of 2021 results of Government Wage Index.


The Government Wage Index measures the level of prices that government employees charge in exchange for their labour services they provide. This GWI is used to deflate the public sector in the National Accounts. Furthermore, it is also essential for evaluating the wage bill, living standards and condition of work of central government employees.

I wish to express my appreciation to the data provider without whose contributions this publication would not have been possible.

A handwritten signature in black ink, appearing to read 'Alex Shimuafeni'.

Alex Shimuafeni
Statistician-General
& CEO, June 2021

Table of Contents



Preface.....	4
1. Government Wage Index.....	6
2. Public administration and defense, Education and Health	7
3. Methodological Note	9

1. Government Wage Index¹

The government wage index posted a marginal growth of 0.1 percent over the year, recording 134.7 basis points during the first quarter of 2021 when compared to the 134.5 basis points estimated in the parallel quarter of 2020. (Figure 1). The increase in the index mainly emanates from education sector.

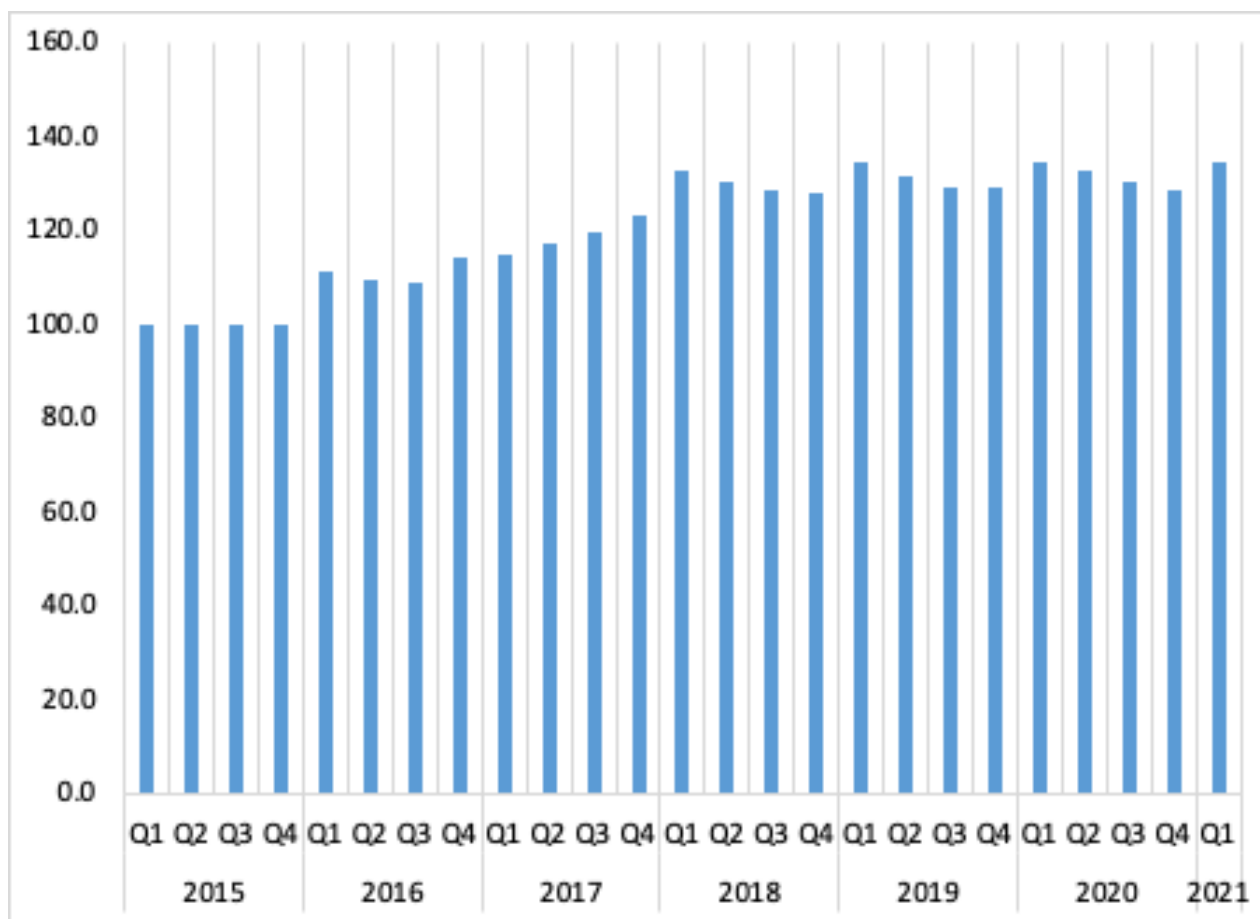


Figure 1: Total Government Wage Index

¹ Government Wage Index is made up of central government wages only.

2. Public administration and defense, Education and Health

Education index recorded a growth of 1.6 percent during the period under review, standing at 128.2 basis point when compared to 126.2 basis points recorded in the first quarter of 2020 (Figure 2). The growth is attributed to increased numbers of teachers within the public education sector.

The Public administration index on the other hand declined posting a 140.4 basis points during the period under review, representing a reduction of 0.8 basis points relative to the 141.2 basis points witnessed in corresponding quarter of 2020. The performance is ascribed to the reduction in the number of employees compensated within the central government.

Similarly, the Health index contracted to 124.4 basis points during the first quarter of 2021 compared to the 125.5 basis points in the same quarter of 2020. The reduction of 0.9 percent in the weighted index is attributed to reductions in high profile senior medical personnel.

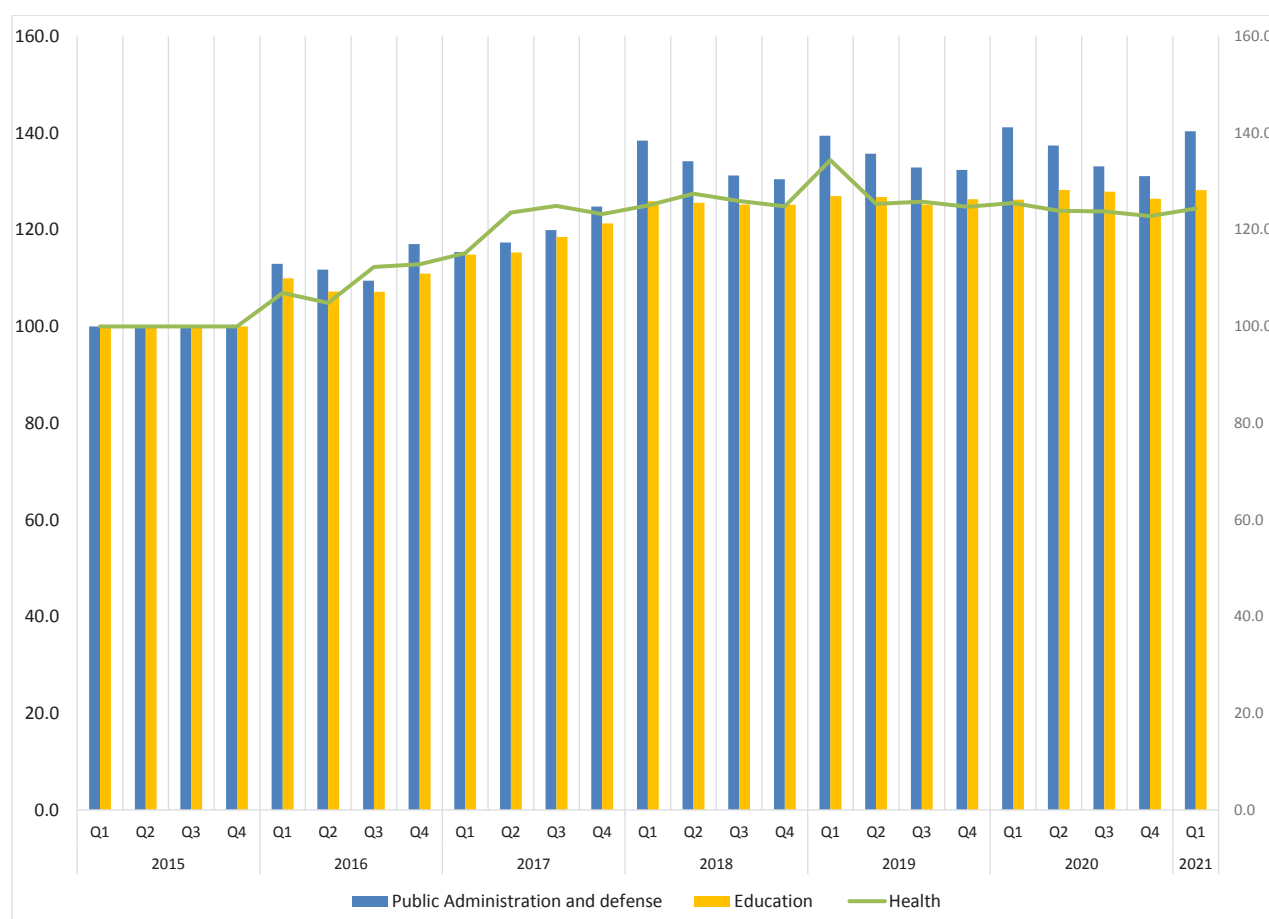


Figure 2: Public Administration and defense, Education and Health (2015=100)

Table 1: Quarterly Wage Index 2015=100

Year	Quarter	Government Wage	Public Administration and	Education	Health
2015	1	100.0	100.0	100.0	100.0
	2	100.0	100.0	100.0	100.0
	3	100.0	100.0	100.0	100.0
	4	100.0	100.0	100.0	100.0
2016	1	111.4	113.0	110.0	106.9
	2	109.5	111.7	107.2	104.9
	3	108.9	109.5	107.2	112.3
	4	114.5	117.0	110.9	112.8
2017	1	115.2	115.4	114.9	115.2
	2	117.2	117.4	115.3	123.6
	3	119.9	119.9	118.5	124.9
	4	123.4	124.8	121.3	123.2
2018	1	132.8	138.4	125.9	125.0
	2	130.5	134.1	125.6	127.4
	3	128.7	131.2	125.2	126.0
	4	128.1	130.4	125.1	124.8
2019	1	134.6	139.4	126.9	134.4
	2	131.6	135.7	126.8	125.4
	3	129.6	132.9	125.2	125.8
	4	129.5	132.4	126.3	124.8
2020	1	134.5	141.2	126.2	125.5
	2	133.0	137.4	128.2	123.9
	3	130.4	133.1	127.9	123.8
	4	128.7	131.1	126.4	122.8
2021	1	134.7	140.4	128.2	124.4

Appendix 1 Methodological Notes

Classification and split of sectors

The classification and split of the three government sectors were done in accordance with the fourth revision of the International Standard Industrial Classification of all Economic Activities (ISIC Rev 4).

Data Sources

The data used to compile the wage index is sourced from Payroll data received from the Ministry of Finance.

Scope and coverage

The target population for the government wage index comprises of public sector which includes central government employees for Public administration and defense, education and Health sectors only. Statutory bodies are excluded from the scope of employees.

Index calculation

The weighted wage index is derived as a sum of the average wage and worker with correspondence between grades within the respective government sectors.

Base period

The government index report is harmonised with the National Accounts base year 2015.

Release date:
24 June 2021

Next release date:
23 September 2021



GOVERNMENT WAGE INDEX

First Quarter of 2021