



Electricity Sectoral Report October 2022

Namibia Statistics Agency

P.O. Box 2133,

FGI House, Post Street Mall,

Windhoek, Namibia

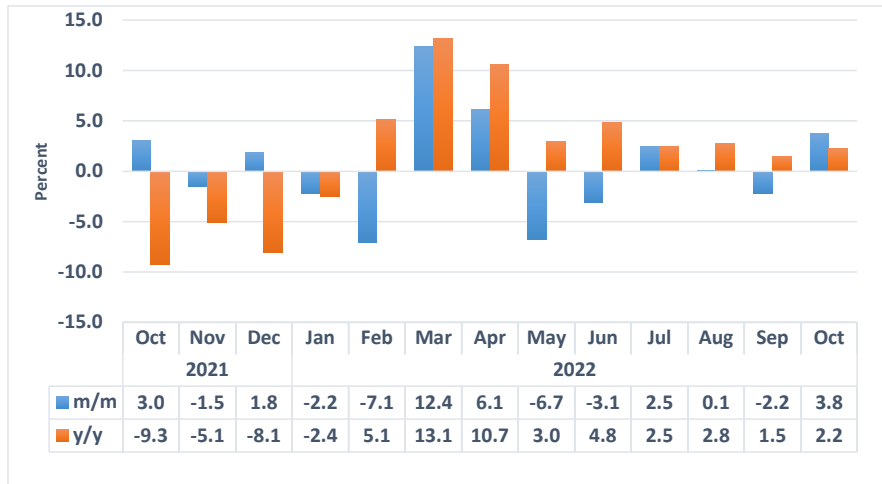
Tel: +264 61 431 3200

Fax: +264 61 431 3253

Email: info@nsa.org.na

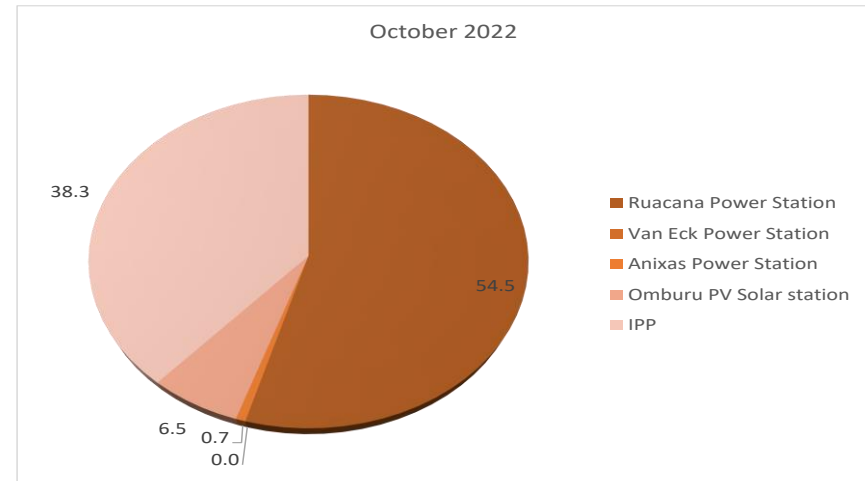
www.nsa.org.na

Chart 1: Electricity Sources Composite Index, Percent



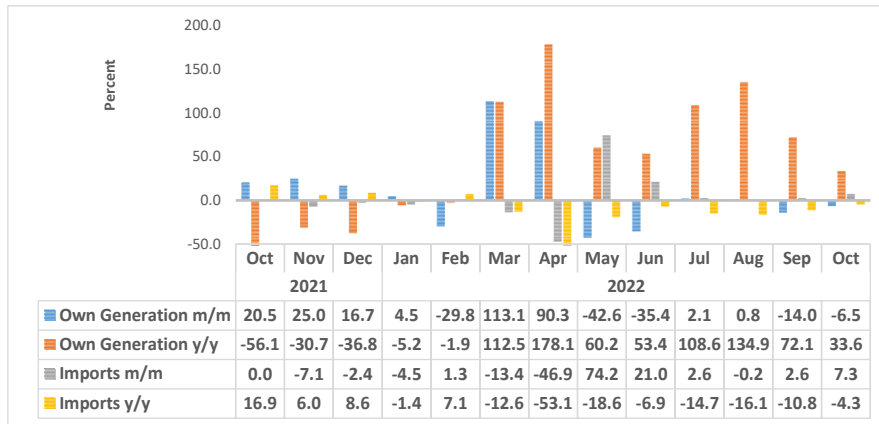
- The **Electricity Sources Composite Index**, which is composed of own generation (local production) and imported electricity for the month of October 2022, increased by 3.8 percent compared to a reduction of 2.2 percent recorded in September 2022. Similarly, the index recorded an increase of 2.2 percent year on year.
- The monthly increase was derived from import which registered an increase of 7.3 percent. While own generation recorded a decline of 6.5 percent.

Chart 2: Contribution of sources to Own Generation, Percent



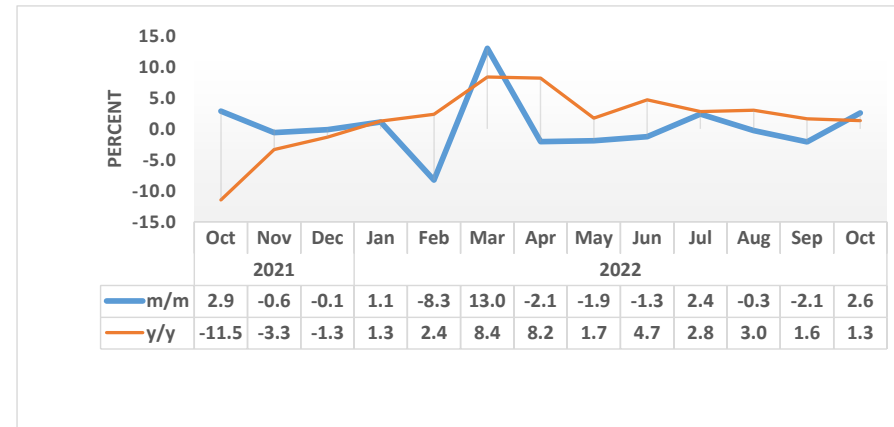
- During the month of October 2022, the local production of electricity stood at 81 558 MWh. Ruacana power station produced 44 426 MWh (54.5%) while the Independent Power Producers (IPPs) collectively generated 31 267 MWh (38.3%) of electricity.
- No electricity was generated from Van Eck Power Station during the month of October 2022 due to ongoing maintenance operations.

Chart 3: Electricity Source Index, Percent



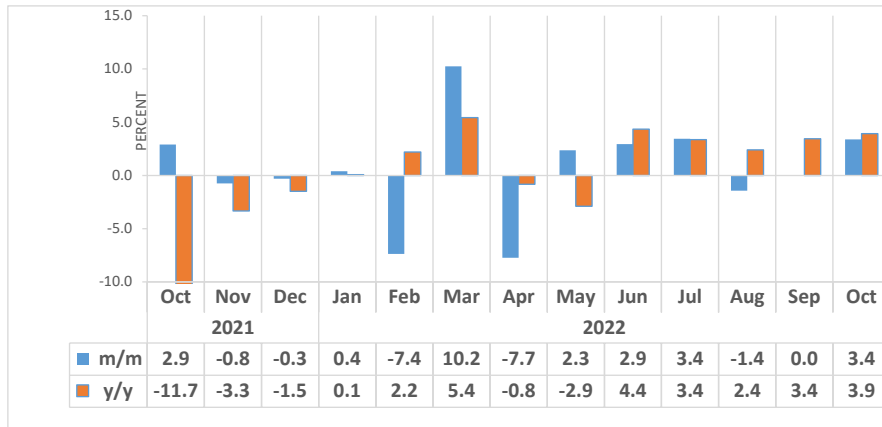
- The **Import Index** posted a monthly growth of 7.3 percent in October 2022, compared to an increase of 2.6 percent that was recorded in the preceding month. Inversely, the index declined by 4.3 percent on an annual basis.
- A total of 278 245 MWh of electricity was imported in October 2022, mostly sourced from Zesco in Zambia, accounting for 47.8 percent. This was followed by Eskom Aggeneis in South Africa (18.6%), Day Ahead Market-SAPP (15.8%) and ZPC Zimbabwe (13.3%).

Chart 4: Electricity Sales Composite Index, Percent



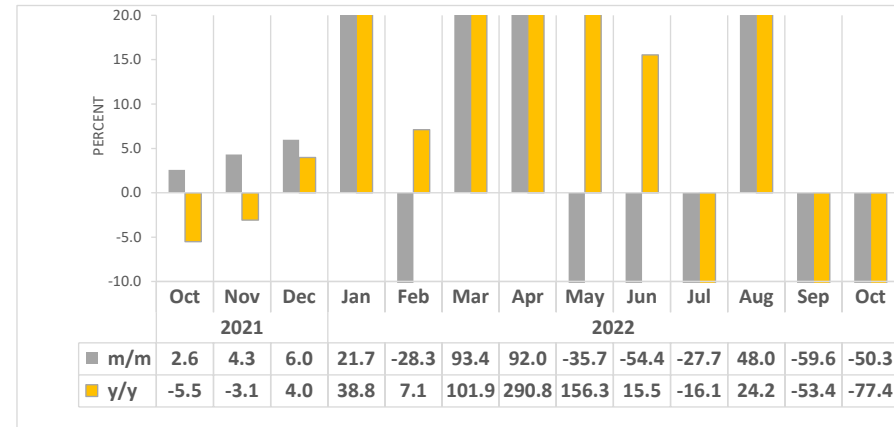
- During the month of October 2022, Electricity **Sales Composite Index** registered an increase of 2.6 percent, as opposed to a decline of 2.1 percent recorded in the preceding month. Similarly, on an annual basis, the index posted an increase of 1.3 percent.
- The upward trend in the index on monthly basis mainly stemmed from an increase of 3.4 percent in domestic sales (Chart 5).

Chart 5: Electricity Domestic Sales Index, Percent



- The **Domestic Sales Index** for October 2022 increased by 3.4 percent month on month. The index annually recorded an increase of 3.9 percent.
- Redistributors - LPU (66.7%) acquired most of the electricity during the review period, followed by Mining (25.4%), while Eskom Orange River obtained a share of 3.5 percent of domestic sales.
- The total amount of electricity sold locally increased from 303 158 MWh recorded during September 2022 to 313 408 MWh recorded in October 2022. While 301 575 MWh of electricity was sold in the corresponding period of 2021.

Chart 6: Electricity Export Index, Percent¹



- The **Export Sales Index** declined by 50.3 percent in October 2022, compared to a decline of 59.6 percent registered a month earlier. The decline in export was reflected in the supply of electricity sales to Angola, STEM Sales-SAPP and South Africa Rietfontein.
- Moreover, the index declined by 77.4 percent yearly when compared to a reduction of 5.5 percent posted in the corresponding month of 2021.
- Namibia exported a total of 2 238 MWh of electricity in October 2022, of which Botswana Power Corp absorbed a share of 44.1 percent, followed by Angola (32.4%) while STEM Sales-SAPP and South Africa Rietfontein received a share of 20.8 percent and 2.7 percent.

¹ This graph is limited to -10 percent and 20 percent for better presentation.

Table 1: Electricity Sources in MWH

Year	Month	Own generated	Import
2020	Jan	249,327	171,655
	Feb	260,165	171,759
	Mar	268,742	252,506
	Apr	270,785	136,187
	May	234,883	176,429
	Jun	145,495	226,701
	Jul	156,692	227,982
	Aug	176,845	209,579
	Sep	155,062	213,956
	Oct	139,242	248,759
	Nov	110,168	255,038
	Dec	140,822	243,109
2021	Jan	98,191	255,534
	Feb	66,648	238,395
	Mar	65,547	252,906
	Apr	95,326	250,225
	May	95,027	251,119
	Jun	64,155	265,577
	Jul	48,192	297,297
	Aug	43,152	301,495
	Sep	50,664	290,922
	Oct	61,058	290,893
	Nov	76,294	270,322
	Dec	89,054	263,899

Table 1: Electricity Sources in MWH Continue...

Year	Month	Own generated	Import
2022	Jan	93,044	252,026
	Feb	65,362	255,286
	Mar	139,261	221,067
	Apr	265,053	117,300
	May	152,261	204,296
	Jun	98,405	247,188
	Jul	100,515	253,554
	Aug	101,360	252,948
	Sep	87,212	259,414
	Oct	81,558	278,245

Table 2: Electricity sources index (2015=100)

Year	Month	Own generated Index	Import Index	Electricity Sources Composite Index
2020	Jan	225.7	72.1	120.7
	Feb	235.5	72.1	123.9
	Mar	243.2	106.0	149.5
	Apr	245.1	57.2	116.7
	May	212.6	74.1	117.9
	Jun	131.7	95.2	106.7
	Jul	141.8	95.7	110.3
	Aug	160.1	88.0	110.8
	Sep	140.3	89.8	105.8
	Oct	126.0	104.4	111.3
	Nov	99.7	107.0	104.7
	Dec	127.5	102.0	110.1
2021	Jan	88.9	107.3	101.4
	Feb	60.3	100.1	87.5
	Mar	59.3	106.2	91.3
	Apr	86.3	105.0	99.1
	May	86.0	105.4	99.3
	Jun	58.1	111.5	94.6
	Jul	43.6	124.8	99.1
	Aug	39.1	126.5	98.8
	Sep	45.9	122.1	98.0
	Oct	55.3	122.1	100.9
	Nov	69.1	113.5	99.4
	Dec	80.6	110.8	101.2

Table 2: Electricity sources index (2015=100) Continue

Year	Month	Own generated Index	Import Index	Electricity Sources Composite Index
2022	Jan	84.2	105.8	99.0
	Feb	59.2	107.2	91.9
	Mar	126.0	92.8	94.8
	Apr	239.9	49.2	99.8
	May	137.8	85.8	126.1
	Jun	89.1	103.8	99.1
	Jul	91.0	106.4	101.5
	Aug	91.7	106.2	101.6
	Sep	78.9	94.4	89.5
	Oct	73.8	116.8	89.5

Table 3: Electricity Sales in MWH

Year	Month	Domestic Sales	Export Sales
2020	Jan	293,012	9,741
	Feb	263,685	9,854
	Mar	345,424	9,445
	Apr	261,738	9,029
	May	268,139	8,600
	Jun	279,446	9,359
	Jul	289,489	9,704
	Aug	295,368	9,809
	Sep	287,338	9,895
	Oct	299,602	10,497
	Nov	282,311	10,674
	Dec	302,906	10,544
2021	Jan	299,283	9,608
	Feb	271,421	8,931
	Mar	290,056	9,164
	Apr	284,527	9,089
	May	297,400	8,915
	Jun	284,881	9,015
	Jul	297,535	8,978
	Aug	296,030	8,979
	Sep	293,074	9,668
	Oct	301,575	9,917
	Nov	299,292	10,346
	Dec	298,355	10,964

Electricity Sales in MWH Continue...

Year	Month	Domestic Sales	Export Sales
2022	Jan	299,509	13,339
	Feb	277,413	9,566
	Mar	305,817	18,501
	Apr	282,149	35,519
	May	288,780	22,849
	Jun	297,285	10,415
	Jul	307,537	7,535
	Aug	303,106	11,149
	Sep	303,158	4,507
	Oct	313,408	2,238

Table 4: Electricity sales index

Year	Month	Domestic sales Index	Export Index	Electricity Sales Composite Index
2020	Jan	108.9	125.2	109.3
	Feb	98.0	126.7	98.8
	Mar	128.4	121.4	128.2
	Apr	97.3	116.1	97.8
	May	99.6	110.5	99.9
	Jun	103.8	120.3	104.3
	Jul	107.6	124.7	108.1
	Aug	109.8	126.1	110.2
	Sep	106.8	127.2	107.4
	Oct	126.9	134.9	127.1
	Nov	115.1	137.2	115.7
	Dec	112.6	135.5	113.2
2021	Jan	111.2	123.5	111.6
	Feb	100.9	114.8	101.3
	Mar	107.8	117.8	108.1
	Apr	105.7	116.8	106.0
	May	110.5	114.6	110.6
	Jun	105.9	115.9	106.1
	Jul	110.6	115.4	110.7
	Aug	110.0	115.4	110.2
	Sep	108.9	124.3	109.3
	Oct	112.1	127.5	112.5
	Nov	111.2	133.0	111.8
	Dec	110.9	140.9	111.7

Electricity sales index Continue...

Year	Month	Domestic sales Index	Export Index	Electricity Sales Composite Index
2022	Jan	125.7	171.5	127.0
	Feb	116.4	123.0	116.6
	Mar	128.4	237.8	131.4
	Apr	118.4	456.5	127.9
	May	121.2	293.7	126.1
	Jun	124.8	133.9	125.0
	Jul	129.1	96.8	128.2
	Aug	127.2	143.3	127.7
	Sep	127.2	57.9	125.3
	Oct	131.5	28.8	128.7

Methodology : Graphical and tabular analysis

Data Sources : The data source for the volume of electricity is sourced from Nam-power. These are data on domestic and export sale, Own Generation and import sources. The Production is in kilowatts per hour (kWh) for all the variables.

Index calculation: The index of sales and sources weighted uses the volume data of 2015.

Conversion : 1 basis point = 0.01 percent