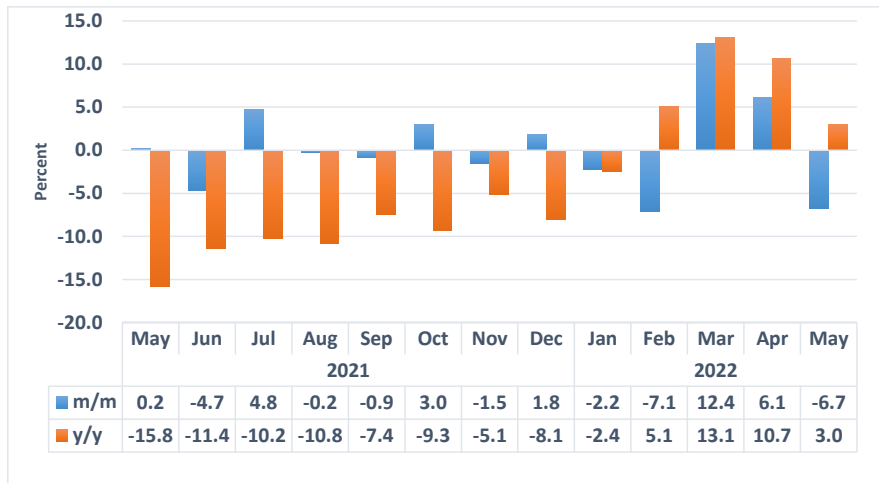


ELECTRICITY

SECTORAL REPORT - MAY 2022



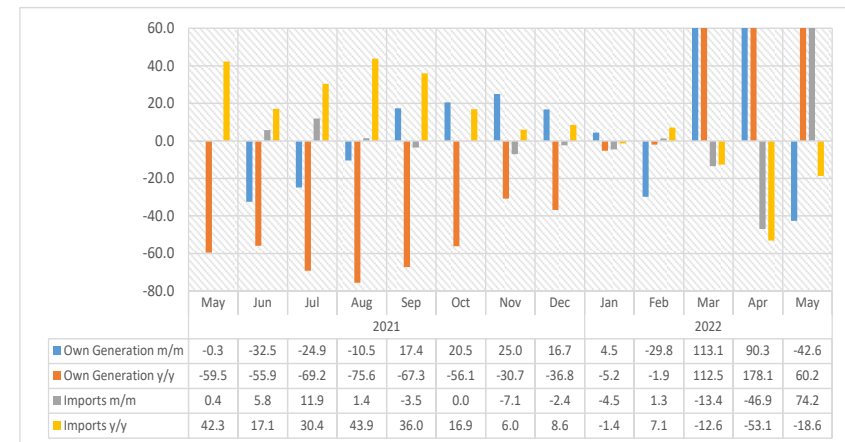
Chart 1: Electricity Sources Composite Index, Percent



- The **Electricity Sources Composite Index**, which is composed of own generation (production) and imported electricity for the month of May 2022, recorded a decline of 6.7 percent, whereas in April 2022 the index registered an increase of 6.1 percent. While, on yearly basis, the index recorded an increase of 3.0 percent.
- The low flow of water that was experienced in the Kunene river is attributed to the decline in the own generation of electricity on a monthly basis (Chart 2), while import on the other hand increased during the month under review.
- The Own Generation index in May 2022 recorded a huge decline of 42.6 percent on a monthly basis due to reduced electricity generation from the Ruacana Power Station. This in contrast to an increase of 90.3 percent that was recorded in April 2022.

- Local production of electricity for May 2022 stood at 152 261 MWh compared to 265 053 MWh produced in April 2022. Most of the generation of electricity mainly occurred at the Ruacana Power Station (79.3%), while the Alten Hardap Solar IPP contributed 5.4 percent. Om-buru PV Solar station produced only 3.3 percent of the electricity.

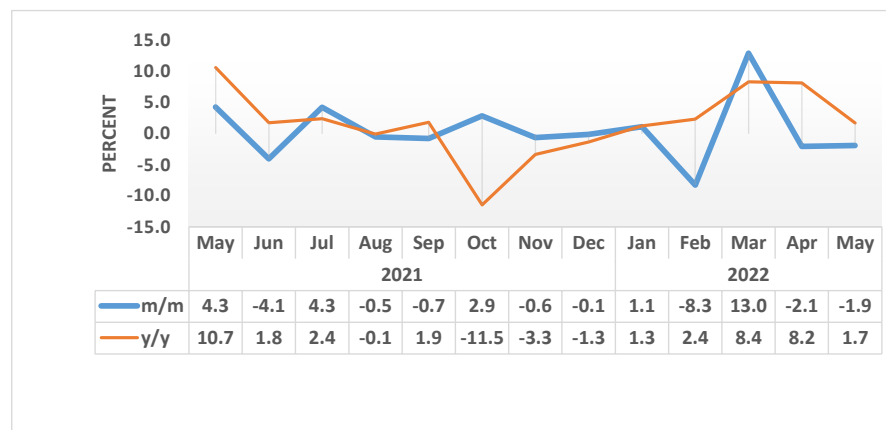
Chart 2: Electricity Source Index, Percent



- The **Import Index** recorded a monthly increase of 74.2 percent in May 2022, compared to a decline of 46.9 percent that was registered in April 2022. However, annually the index declined by 18.6 percent from a marginal growth of 0.4 percent.
- In May 2022, a total of 204 296 MWh of electricity was imported in the country. The electricity was mainly sourced from Zesco in Zambia (58.8%), followed by Eskom aggeneis in South Africa (19.3%).

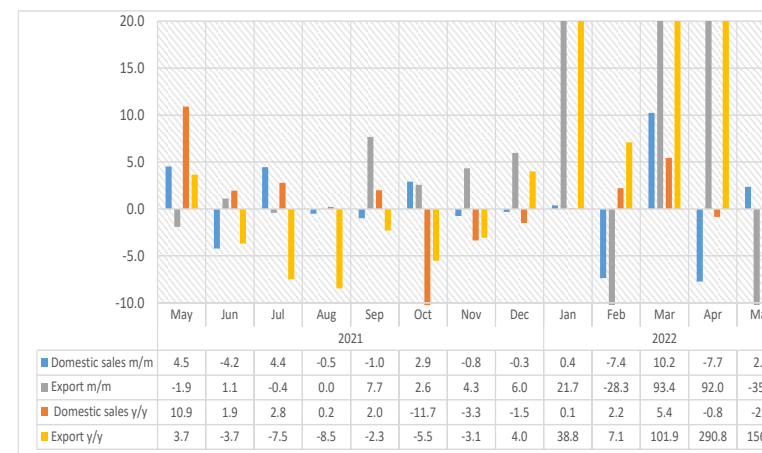
- ZPC in Zimbabwe supplied 12.1 percent of electricity required by Namibia while 5.3 percent of electricity was sourced from Eskom Orange River.

Chart 3: Electricity Sales Composite Index, Percent



- The **Electricity Sales Composite Index** for May 2022 posted a monthly decline of 1.9 percent, compared to a reduction of 2.1 percent recorded in April 2022. The index recorded an increase of 1.7 percent year on year.
- The monthly decline in the index was mainly due to the reduction in export of electricity that recorded a decline of 35.7 percent (Chart 3).

Chart 4: Electricity Sales Index, Percent



- The **Domestic Sales Index** recorded an increase of 2.3 percent month on month, while registering reduction of 2.9 percent on an annual basis.
- Domestic sales were mainly sold to Redistributors - LPU (69.5%), Mining (22.8%) while Eskom Orange River scooped a share of 3.8 percent.
- For the month of May 2022, the amount of electricity sold on the domestic market stood at 288 780 MWh, up from 282 149 MWh and 297 400 MWh recorded in the preceding month and corresponding month of 2021, respectively.
- The **Export Sales Index** declined by 35.7 percent in May 2022, from an increase of 92.0 percent registered in April 2022. The decline in demand was mainly from STEM Sales-SAPP. On an annual

basis, the index increased significantly by 156.3 percent when compared to the corresponding year of 2021.

- In the month of May 2022, Namibia exported 22 849 MWh of electricity. STEM Sales-SAPP accounted 58.7 percent of electricity exported, followed by Angola (23.8%) while Botswana Power Corp accounted for 15.2 percent.

Table 1: Electricity SOURCES in MWH

Year	Month	Own generated	Import
2018	Jan	79,862	334,179
	Feb	197,034	207,219
	Mar	214,593	200,423
	Apr	260,294	127,802
	May	222,541	145,444
	Jun	99,652	274,653
	Jul	110,380	323,915
	Aug	85,206	271,109
	Sep	77,605	294,266
	Oct	61,374	324,465
	Nov	64,153	319,578
	Dec	83,455	307,166
2019	Jan	142,891	265,752
	Feb	123,392	248,783
	Mar	161,498	227,721
	Apr	172,656	178,848
	May	117,685	284,256
	Jun	71,677	313,783
	Jul	78,401	284,776
	Aug	69,310	309,423
	Sep	59,311	325,442
	Oct	61,458	333,984
	Nov	69,370	310,411
	Dec	146,604	229,566

Table 1: Electricity Sources in MWH Continue...

Year	Month	Own generated	Import
2020	Jan	249,327	171,655
	Feb	260,165	171,759
	Mar	268,742	252,506
	Apr	270,785	136,187
	May	234,883	176,429
	Jun	145,495	226,701
	Jul	156,692	227,982
	Aug	176,845	209,579
	Sep	155,062	213,956
	Oct	139,242	248,759
	Nov	110,168	255,038
	Dec	140,822	243,109
2021	Jan	98,191	255,534
	Feb	66,648	238,395
	Mar	65,547	252,906
	Apr	95,326	250,225
	May	95,027	251,119
	Jun	64,155	265,577
	Jul	48,192	297,297
	Aug	43,152	301,495
	Sep	50,664	290,922
	Oct	61,058	290,893
	Nov	76,294	270,322
	Dec	89,054	263,899
2022	Jan	93,044	252,026
	Feb	65,362	255,286
	Mar	139,261	221,067
	Apr	265,053	117,300
	May	152,261	204,296

Table 2: Electricity sources index (2015=100)

Year	Month	Own generated Index	Import Index	Electricity Sources Composite Index
2018	Jan	72.3	140.3	118.7
	Feb	178.3	87.0	115.9
	Mar	194.2	84.1	119.0
	Apr	235.6	53.6	111.3
	May	201.4	61.0	105.5
	Jun	90.2	115.3	107.3
	Jul	99.9	136.0	124.5
	Aug	77.1	113.8	102.2
	Sep	70.2	123.5	106.6
	Oct	55.5	136.2	110.6
	Nov	58.1	134.1	110.0
	Dec	75.5	128.9	112.0
2019	Jan	129.3	111.5	117.2
	Feb	111.7	104.4	106.7
	Mar	146.2	95.6	111.6
	Apr	156.3	75.1	100.8
	May	106.5	119.3	115.3
	Jun	64.9	131.7	110.5
	Jul	71.0	119.5	104.1
	Aug	62.7	129.9	108.6
	Sep	53.7	136.6	110.3
	Oct	55.6	140.2	113.4
	Nov	62.8	130.3	108.9
	Dec	132.7	96.4	107.9

Table 2: Electricity sources index (2015=100) Continue...

Year	Month	Own generated Index	Import Index	Electricity Sources Composite Index
2020	Jan	225.7	72.1	120.7
	Feb	235.5	72.1	123.9
	Mar	243.2	106.0	149.5
	Apr	245.1	57.2	116.7
	May	212.6	74.1	117.9
	Jun	131.7	95.2	106.7
	Jul	141.8	95.7	110.3
	Aug	160.1	88.0	110.8
	Sep	140.3	89.8	105.8
	Oct	126.0	104.4	111.3
	Nov	99.7	107.0	104.7
	Dec	127.5	102.0	110.1
2021	Jan	88.9	107.3	101.4
	Feb	60.3	100.1	87.5
	Mar	59.3	106.2	91.3
	Apr	86.3	105.0	99.1
	May	86.0	105.4	99.3
	Jun	58.1	111.5	94.6
	Jul	43.6	124.8	99.1
	Aug	39.1	126.5	98.8
	Sep	45.9	122.1	98.0
	Oct	55.3	122.1	100.9
	Nov	69.1	113.5	99.4
	Dec	80.6	110.8	101.2
2022	Jan	84.2	105.8	99.0
	Feb	59.2	107.2	91.9
	Mar	126.0	92.8	94.8
	Apr	239.9	49.2	99.8
	May	137.8	85.8	126.1

Table 3: Electricity Sales in MWH

Year	Month	Domestic Sales	Export Sales
2020	Jan	293,012	9,741
	Feb	263,685	9,854
	Mar	345,424	9,445
	Apr	261,738	9,029
	May	268,139	8,600
	Jun	279,446	9,359
	Jul	289,489	9,704
	Aug	295,368	9,809
	Sep	287,338	9,895
	Oct	299,602	10,497
	Nov	282,311	10,674
	Dec	302,906	10,544
2021	Jan	299,283	9,608
	Feb	271,421	8,931
	Mar	290,056	9,164
	Apr	284,527	9,089
	May	297,400	8,915
	Jun	284,881	9,015
	Jul	297,535	8,978
	Aug	296,030	8,979
	Sep	293,074	9,668
	Oct	301,575	9,917
	Nov	299,292	10,346
	Dec	298,355	9,852

Electricity Sales in MWH Continue...

Year	Month	Domestic Sales	Export Sales
2020	Jan	293,012	9,741
	Feb	263,685	9,854
	Mar	345,424	9,445
	Apr	261,738	9,029
	May	268,139	8,600
	Jun	279,446	9,359
	Jul	289,489	9,704
	Aug	295,368	9,809
	Sep	287,338	9,895
	Oct	299,602	10,497
	Nov	282,311	10,674
	Dec	302,906	10,544
2021	Jan	299,283	9,608
	Feb	271,421	8,931
	Mar	290,056	9,164
	Apr	284,527	9,089
	May	297,400	8,915
	Jun	284,881	9,015
	Jul	297,535	8,978
	Aug	296,030	8,979
	Sep	293,074	9,668
	Oct	301,575	9,917
	Nov	299,292	10,346
	Dec	298,355	10,964
2022	Jan	299,509	13,339
	Feb	277,413	9,566
	Mar	305,817	18,501
	Apr	282,149	35,519
	May	288,780	22,849

Table 4: Electricity sales index

Year	Month	Domestic sales Index	Export Index	Electricity Sales Composite Index
2018	Jan	115.2	130.5	115.6
	Feb	103.7	122.3	104.2
	Mar	110.5	113.3	110.6
	Apr	112.4	120.7	112.6
	May	106.6	110.6	106.7
	Jun	107.6	112.5	107.7
	Jul	117.8	122.8	118.0
	Aug	107.1	115.7	107.4
	Sep	107.2	123.8	107.7
	Oct	109.8	123.9	110.2
	Nov	109.8	128.1	110.3
	Dec	105.0	134.3	105.9
2019	Jan	112.8	145.8	113.8
	Feb	102.1	132.9	103.0
	Mar	114.0	130.1	114.4
	Apr	104.3	127.8	105.0
	May	111.2	125.7	111.6
	Jun	104.6	119.3	105.0
	Jul	110.9	120.0	111.2
	Aug	100.9	123.1	101.5
	Sep	104.0	127.0	104.6
	Oct	107.4	133.6	108.2
	Nov	110.3	133.8	111.0
	Dec	105.3	127.0	105.9

Electricity sales index Continue...

Year	Month	Domestic sales Index	Export Index	Electricity Sales Composite Index
2020	Jan	108.9	125.2	109.3
	Feb	98.0	126.7	98.8
	Mar	128.4	121.4	128.2
	Apr	97.3	116.1	97.8
	May	99.6	110.5	99.9
	Jun	103.8	120.3	104.3
	Jul	107.6	124.7	108.1
	Aug	109.8	126.1	110.2
	Sep	106.8	127.2	107.4
	Oct	126.9	134.9	127.1
	Nov	115.1	137.2	115.7
	Dec	112.6	135.5	113.2
2021	Jan	111.2	123.5	111.6
	Feb	100.9	114.8	101.3
	Mar	107.8	117.8	108.1
	Apr	105.7	116.8	106.0
	May	110.5	114.6	110.6
	Jun	105.9	115.9	106.1
	Jul	110.6	115.4	110.7
	Aug	110.0	115.4	110.2
	Sep	108.9	124.3	109.3
	Oct	112.1	127.5	112.5
	Nov	111.2	133.0	111.8
	Dec	110.9	140.9	111.7
2022	Jan	125.7	171.5	127.0
	Feb	116.4	123.0	116.6
	Mar	128.4	237.8	131.4
	Apr	118.4	456.5	127.9
	May	107.3	293.7	112.5

Methodology : Graphical and tabular analysis

Data Sources : The data source for volume of electricity is sourced from Nam-power. These are data on domestic and export sale, Own Generation and import sources. The Production is in kilowatts per hour (kWh) for all the variables.

Index calculation: The index of sales and sources weighted uses the volume data of 2015.

Conversion : 1 basis point = 0.01 percent