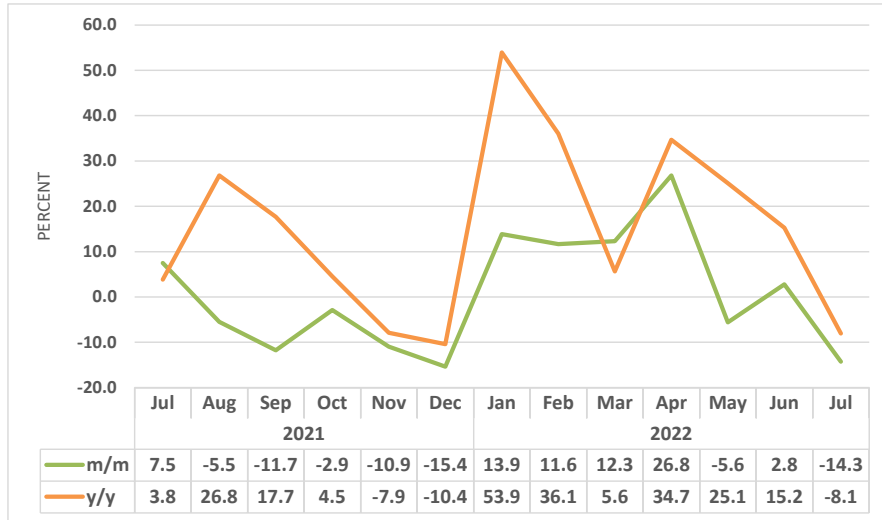


LIVESTOCK

SECTORAL REPORT - JULY 2022



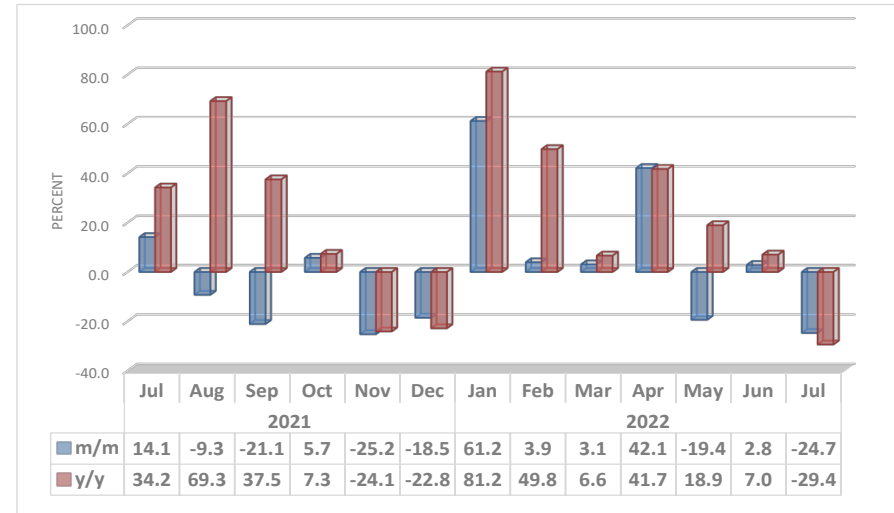
Chart 1: Livestock Marketed Composite Index, Percent



- The **Livestock Marketed Composite Index** declined monthly by 14.3 percent in July 2022, compared to an increase of 2.8 percent that was registered during the preceding month. The index however, declined by 8.1 percent year on year.
- The monthly decline in the index was observed in all the categories of livestock marketed except for live export of cattle on hoof that recorded an increase.
- In absolute terms, the total number of livestock marketed for July 2022 stood at 94 832, compared to 116 420 livestock recorded during the preceding month, while 71 693 livestock were marketed during the corresponding month of 2021. The total number of livestock marketed for July 2022 recorded a huge decline due to the FMD-related

restrictions on livestock movements in South Africa and is certain to result in lower marketing during August 2022.

Chart 2: Cattle Export Approved Abattoirs & Butchers Index, Percent

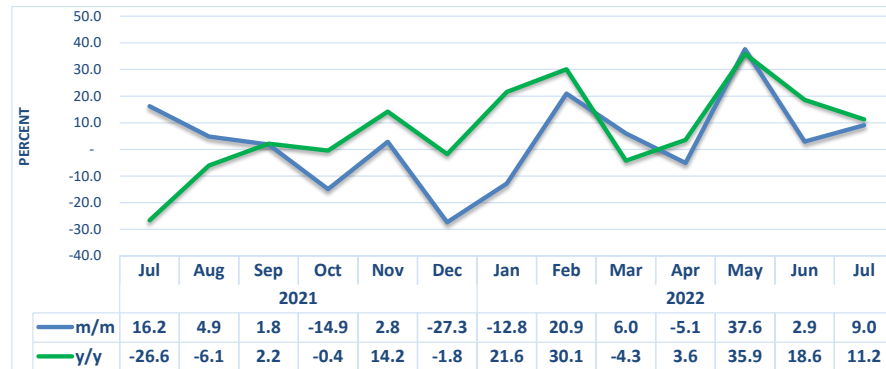


- The Index for '**Cattle Export Approved Abattoirs and Butchers**' in July 2022 declined by 24.7 percent monthly, compared to an increase of 2.8 percent recorded during the preceding month. Furthermore, the index recorded an annual decline of 29.4 percent.
- The number marketed through export approved abattoirs and butchers for July 2022 amounted to 7 374 animals, of which 84.8 percent (6 255 cattle) were sourced from the Southern Veterinary Cordon Fence (S-VCF), while

15.2 percent (1 119 cattle) were from the Northern Veterinary Cordon Fence (N-VCF).

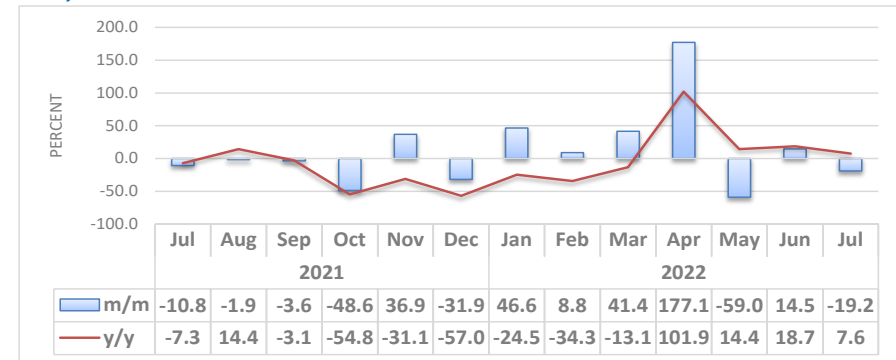
while Botswana (298 cattle) and Zimbabwe (16 cattle) secured third and fourth places.

Chart 3: Live Cattle Exported on Hoof Index, Percent



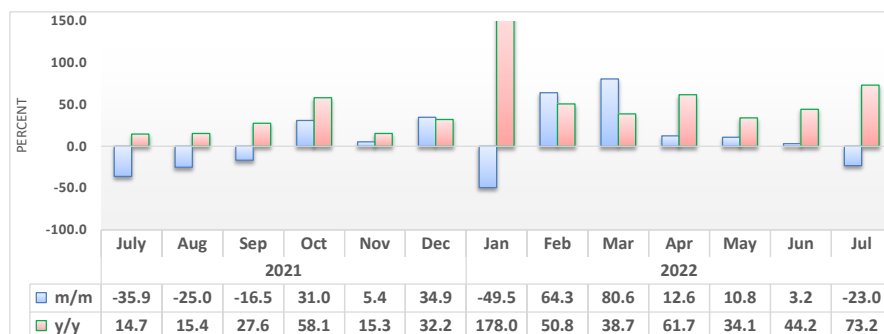
- The Index for **Live Cattle Exported on Hoof** on a monthly basis recorded rose by 9.0 percent during the review period, compared to an increase of 2.9 percent recorded in June 2022. Annually, the index recorded an increase of 11.2 percent.
- Export of live cattle on hoof for the month of July 2022 amounted to 15 593 cattle, compared to 14 301 cattle recorded in June 2022 while 14 018 live cattle were registered a year earlier.
- South Africa was the main destination of export with 15 272 cattle during the month of July 2022, followed by Angola in the second place,

Chart 4: Small Stock Export Approved Abattoirs and Butchers Index, Percent



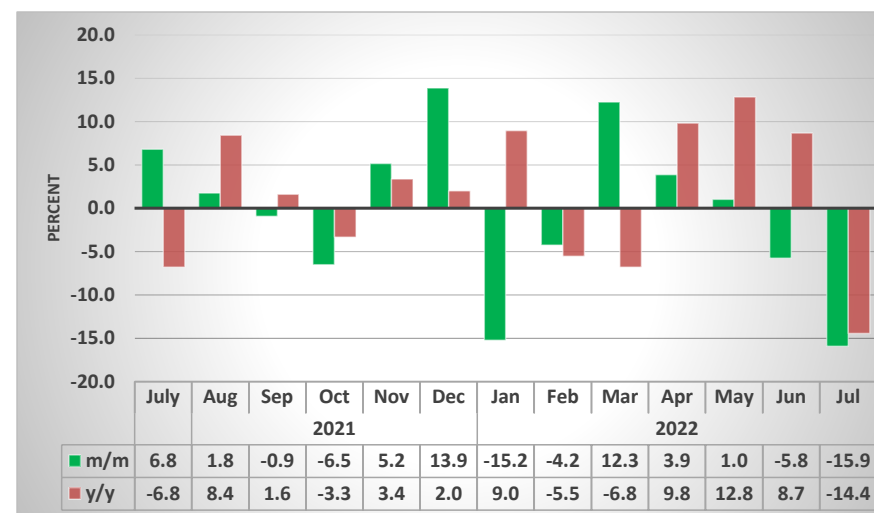
- On a monthly basis, the index for **‘Small Stock Export Approved Abattoirs and Butchers’** registered a decline of 19.2 percent in July 2022, compared to an increase of 14.5 percent recorded in June 2022. Annually, the index increased by 7.6 percent.
- A total of 10 893 small stock were marketed through the export approved abattoirs and butchers in July 2022, of which 10 196 were sheep and 697 were goats. All sheep were sourced from the Southern Veterinary Cordon Fence (S-VCF). On the other hand, 693 goats were slaughtered at butchers south of the VCF, while 4 goats were sourced from the Northern Veterinary Cordon Fence (N-VCF).

Chart 5: Live Small Stock Exported, Percent



- On a monthly basis, the Index for **Live Small Stock Exported** recorded a decline of 23.0 percent in July 2022, compared to an increase of 3.2 percent registered in June 2022. Annually, the index recorded an increase of 73.2 percent.
- During the review period, 57 748 small stock were exported live in July 2022. Sheep accounted for the largest share of 74.1 percent, while goats contributed 25.9 percent of the total exported live small stock.
- A total of 42 817 sheep were marketed in July 2022, of which 42 596 sheep were exported live to South Africa, while Angola and Zambia sourced 200 sheep and 21 sheep from Namibia, respectively. In terms of goats, a total of 14 828 live goats were exported to South Africa, followed by Angola with 63 goats while Botswana imported 40 goats from Namibia for the period under review.

Chart 6: Pigs Index, Percent



- During the month of July 2022, the Index for **Pigs** on a monthly basis declined by 15.9 percent, a deterioration compared to a reduction of 5.8 percent registered in the preceding month. Similarly, index recorded a decline of 14.4 percent year on year.
- The number of pigs slaughtered locally stood at 3 224 pigs in July 2022, compared to 3 834 pigs slaughtered a month earlier, while 3 768 pigs were slaughtered locally during the corresponding month of 2021.

Table1. Number of livestock marketed ('000)

Year	Month	Cattle export abattoirs & butchers	Cattle live exported South Africa & Angola	Small stock Export abattoirs and butchers	Live small stock South Africa and Angola	Pigs slaughtered	Total Livestock Marketed
2018	Jan	5.2	17.8	19.6	13.2	3.8	59.6
	Feb	5.2	31.3	20.4	34.4	3.0	94.2
	Mar	7.8	37.1	33.0	39.3	3.0	120.2
	Apr	9.0	20.2	54.8	56.9	2.9	143.8
	May	7.0	20.6	43.2	64.2	3.7	138.7
	Jun	10.2	25.5	35.7	77.7	3.4	152.4
	Jul	5.3	27.4	33.1	77.3	4.0	147.1
	Aug	6.3	30.5	30.0	59.4	4.1	130.3
	Sep	6.1	28.9	21.5	39.8	4.1	100.4
	Oct	6.3	23.6	25.6	37.7	5.1	98.4
	Nov	7.2	23.7	30.0	40.3	4.2	105.5
	Dec	2.6	21.3	28.2	47.8	3.8	103.7
2019	Jan	1.8	12.0	24.0	27.5	4.5	69.8
	Feb	5.8	17.9	16.8	39.0	3.7	83.2
	Mar	13.5	33.4	33.4	62.9	3.7	146.9
	Apr	11.5	30.7	65.5	77.2	4.3	189.1
	May	18.9	37.4	32.8	79.6	4.1	172.8
	Jun	15.5	28.1	25.6	73.5	3.8	146.5
	Jul	14.5	28.1	22.6	57.1	4.2	126.6
	Aug	17.3	27.0	12.8	46.5	3.7	107.3
	Sep	13.5	22.4	11.3	34.6	3.8	85.5
	Oct	7.9	22.1	10.0	35.1	3.9	78.9
	Nov	8.4	19.0	8.1	27.5	3.8	66.8
	Dec	2.4	11.3	12.1	48.2	4.2	78.1

Table1: Number of livestock marketed ('000), continue.....

Year	Month	Cattle export abattoirs & butchers	Cattle live exported South Africa & Angola	Small stock Export abattoirs and butchers	Live small stock South Africa and Angola	Pigs slaughtered	Total Livestock Marketed
2020	Jan	6.0	9.9	10.9	11.3	3.7	41.9
	Feb	6.5	21.3	11.4	18.4	3.4	61.1
	Mar	8.2	17.6	14.8	32.3	4.0	76.8
	Apr	7.9	10.3	27.5	33.7	3.9	83.3
	May	13.2	6.1	13.5	36.4	3.3	72.6
	Jun	9.7	10.0	13.1	37.8	3.8	74.4
	Jul	7.8	19.1	10.9	29.1	4.0	70.9
	Aug	5.6	15.6	8.7	21.7	3.5	55.1
	Sep	5.4	14.7	9.9	16.4	3.7	50.1
	Oct	7.4	12.8	10.9	17.3	3.7	52.0
	Nov	7.8	11.5	9.8	25.0	3.6	57.7
	Dec	6.2	9.7	10.7	29.4	4.2	60.2
2021	Jan	4.3	6.8	8.9	7.1	3.3	30.4
	Feb	5.4	7.7	11.1	21.4	3.7	49.3
	Mar	7.8	11.1	11.9	42.0	4.2	77.0
	Apr	8.3	9.7	14.2	40.6	3.7	76.5
	May	8.0	10.2	10.3	54.2	3.6	86.3
	Jun	9.2	12.1	11.3	52.0	3.5	88.1
	Jul	10.4	14.0	10.1	33.3	3.8	71.7
	Aug	9.5	14.7	9.9	25.0	3.8	63.0
	Sep	7.5	15.0	9.6	20.9	3.8	56.7
	Oct	7.9	12.7	4.9	27.4	3.6	56.5
	Nov	5.9	13.1	6.7	28.8	3.7	58.3
	Dec	4.8	9.5	4.6	38.9	4.3	62.1
2022	Jan	7.8	8.3	6.7	19.6	3.6	46.0
	Feb	8.1	10.0	7.3	32.3	3.5	61.1
	Mar	8.3	10.6	10.4	58.3	3.9	91.4
	Apr	11.8	10.1	28.7	65.6	4.0	120.2
	May	9.5	13.9	11.8	72.7	4.1	111.9
	Jun	9.8	14.3	13.5	75.0	3.8	116.4
	Jul	7.4	15.6	10.9	57.7	3.2	94.8

Table2: Indices of Livestock marketed

Year	Month	Cattle export abattoirs & butchers	Cattle Live export on hoof	Small stock Export abattoirs and butchers	Live small stock South Africa and Angola	Pigs slaughtered	Composite Index
2018	Jan	51.9	83.5	44.8	27.5	122.4	63.3
	Feb	52.1	146.8	46.6	71.6	94.2	90.0
	Mar	78.8	173.9	75.6	81.8	96.9	114.8
	Apr	90.4	94.5	125.6	118.4	93.5	97.2
	May	70.9	96.4	99.0	133.6	118.7	89.6
	Jun	102.5	119.4	81.9	161.8	107.6	112.5
	Jul	53.4	128.2	75.8	161.1	128.3	94.8
	Aug	63.5	142.9	68.6	123.7	132.3	100.9
	Sep	60.9	135.7	49.2	82.9	129.9	92.0
	Oct	63.6	110.8	58.6	78.5	163.9	85.3
	Nov	73.0	111.0	68.8	84.0	133.0	89.7
	Dec	26.6	99.9	64.6	99.5	120.0	66.2
2019	Jan	18.2	56.4	55.0	57.2	143.9	42.8
	Feb	58.2	83.9	38.5	81.3	116.4	70.1
	Mar	136.2	156.4	76.6	131.0	117.0	138.0
	Apr	116.2	143.8	149.9	160.7	136.2	133.6
	May	190.2	175.2	75.2	165.7	131.4	171.6
	Jun	155.6	131.9	58.7	153.1	120.5	137.8
	Jul	146.4	131.8	51.9	119.0	133.3	130.8
	Aug	174.1	126.7	29.3	96.9	117.6	136.5
	Sep	135.5	104.9	25.9	72.0	120.1	109.5
	Oct	79.4	103.4	22.8	73.1	125.1	84.8
	Nov	84.1	88.9	18.6	57.3	120.5	79.6
	Dec	24.0	53.1	27.6	100.4	133.3	45.2

Table2: Indices of Livestock marketed, continue...

Year	Month	Cattle export abattoirs & butchers	Cattle Live export on hoof	Small stock Export abattoirs and butchers	Live small stock South Africa and Angola	Pigs slaughtered	Composite Index
2020	Jan	60.6	46.6	24.9	23.6	118.7	51.3
	Feb	65.1	99.8	26.2	38.4	109.9	74.1
	Mar	82.2	82.7	33.8	67.3	126.1	78.7
	Apr	79.5	48.1	63.0	70.3	124.5	67.2
	May	133.1	28.7	31.0	75.8	105.3	80.3
	Jun	97.3	46.9	29.9	78.8	120.6	72.4
	Jul	78.4	89.6	25.0	60.5	128.9	78.4
	Aug	56.4	73.3	19.9	45.1	112.7	60.7
	Sep	54.8	68.7	22.6	34.1	119.2	57.7
	Oct	74.2	59.9	24.9	36.0	117.1	63.1
	Nov	78.5	53.8	22.4	52.1	115.2	63.8
	Dec	62.9	45.4	24.4	61.3	132.9	55.5
2021	Jan	43.2	32.0	20.4	14.7	105.5	36.8
	Feb	54.3	36.2	25.5	44.6	116.5	46.4
	Mar	78.6	52.1	27.3	87.5	132.6	67.2
	Apr	84.0	45.7	32.5	84.5	116.9	66.8
	May	80.7	47.9	23.6	112.9	114.9	67.9
	Jun	92.2	56.5	26.0	108.3	112.5	75.7
	Jul	105.2	65.7	23.2	69.4	120.1	81.4
	Aug	95.4	68.9	22.8	52.1	122.2	77.0
	Sep	75.3	70.2	22.0	43.5	121.1	67.9
	Oct	79.6	59.7	11.3	57.0	113.2	65.9
	Nov	59.6	61.4	15.4	60.0	119.1	58.7
	Dec	48.5	44.6	10.5	81.0	135.6	49.7
2022	Jan	78.2	38.9	15.4	40.9	115.0	56.6
	Feb	81.3	47.0	16.8	67.2	110.1	63.2
	Mar	83.8	49.9	23.7	121.4	123.6	71.0
	Apr	119.1	47.3	65.7	136.6	128.4	90.0
	May	96.0	65.1	27.0	151.4	129.7	84.9
	Jun	98.7	67.0	30.9	156.2	122.2	87.3
	Jul	74.3	73.1	24.9	120.3	102.8	74.9

- Data Sources** : The data was obtained from the Meat Board of Namibia.
- Base year** : Livestock Sectoral report is harmonised with the quarterly and annual national accounts base year 2015.
- Calculations of index** : The index is calculated based on the 2015 base year volumes and 2015 weights. The index is a magnitude of the volume Changes over time, with reference to the volume of the base year 2015. The index is calculated as a ratio of the volume of a specific component in a specific month to the total volume of that component in 2015.
- Conversion** : 1 basis point = 0.01 percent