



Transport Sectoral Report December 2022

Namibia Statistics Agency
P.O. Box 2133
FGI House, Post Street Mall
Windhoek Namibia

Tel: +264 61 431 3200
Fax: +264 61 431 3253
Email: info@nsa.org.na
www.nsa.org.na

Chart 1: Transport Composite Cargo Index, Percentage Change

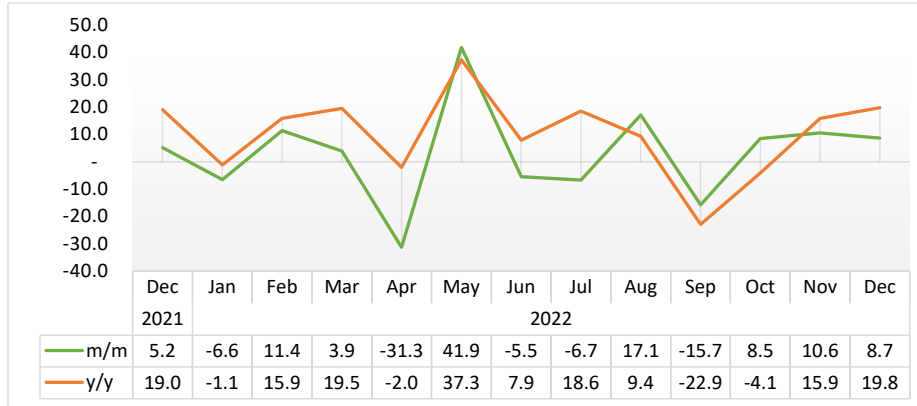
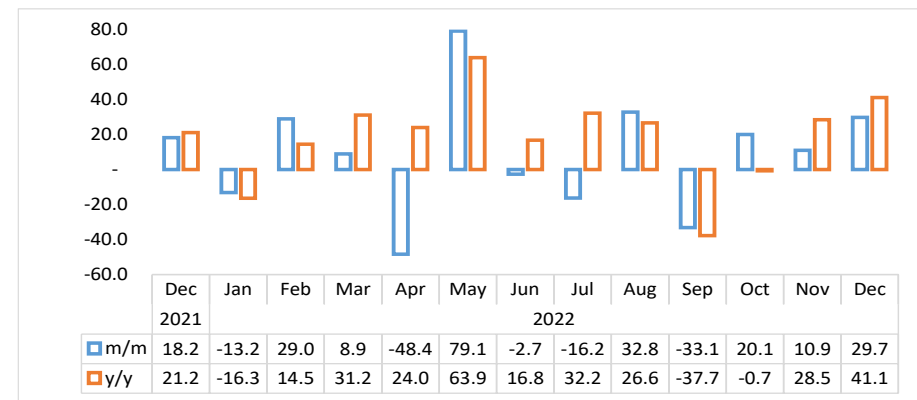
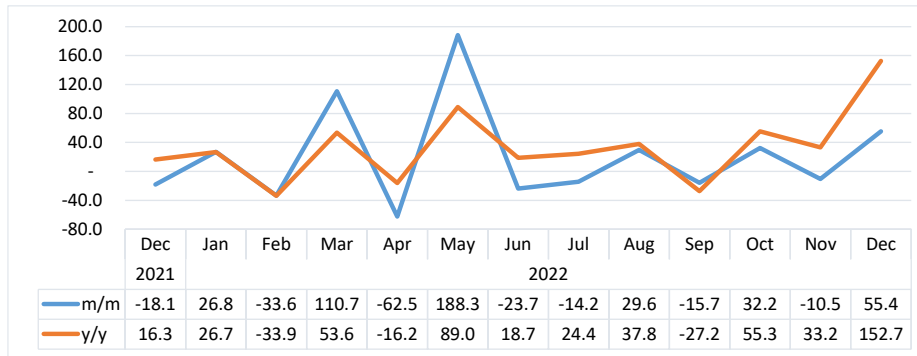


Chart 2: Sea Cargo Index, Percentage Change



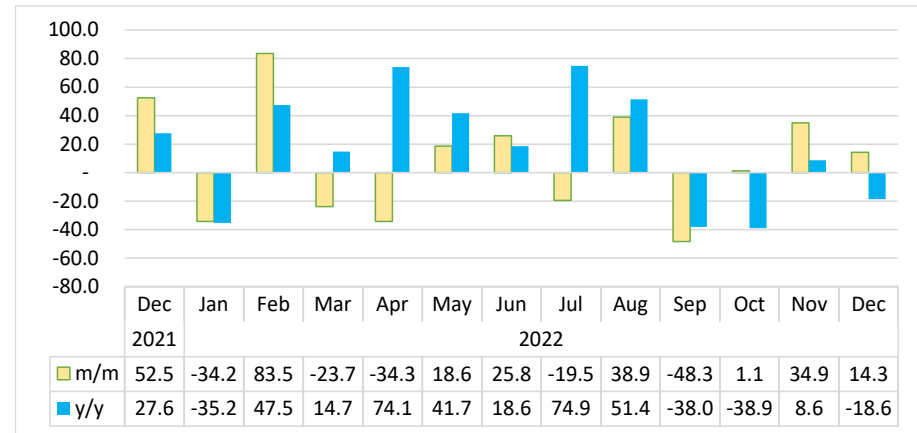
- The **Transport Composite Cargo Index** (Chart 1) consists of Road Cargo, Air Cargo, Sea Cargo, and Rail Cargo. The index recorded a growth of 8.7 percent in December 2022, compared to a growth of 10.6 percent posted a month earlier. Moreover, the index posted a yearly increase of 19.8 percent.
- The monthly increase is attributed to the high volumes of cargo for consignments transported during December 2022 via sea and air.
- Namibia transported 1 264 415 tonnes of cargo (through Sea, Rail, Road, and Air) in December 2022, compared to 1 163 273 tonnes and 1 055 642 tonnes that were transported during the preceding month and the corresponding month of 2021, respectively.
- The **Sea Cargo Index** (Chart 2) which consists of Sea landed, Sea-Shipped, and Sea Trans-shipped recorded an increase of 29.7 percent in December 2022, upward from a growth of 10.9 percent posted in the preceding month. Moreover, the index increased by 41.1 percent year on year.
- The increase on a monthly basis in the Sea Cargo Index is mainly associated with the sea-shipped cargo and sea-landed cargo that registered high volumes of goods transported.

Chart 3: Sea Shipped Index, Percentage Change



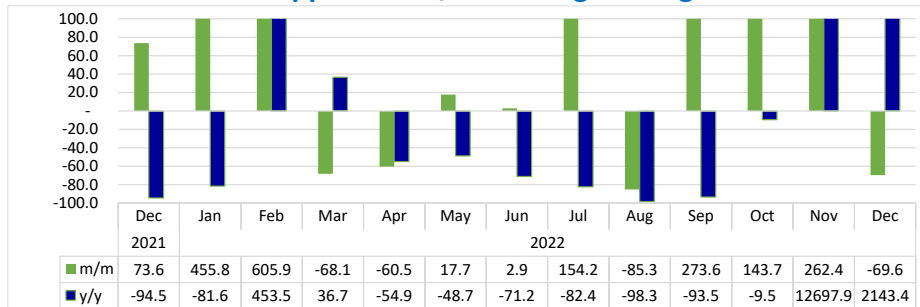
- The **Sea Shipped Index** (Chart 3) rebounded on monthly basis by recording a growth of 55.4 percent in December 2022, in contrast to a decline of 10.5 percent registered in the preceding month. Additionally, the index increased by 152.7 percent year on year.
- The increase recorded monthly was mainly derived from high volumes of cargo of export of frozen fish, salt bagged, scrap steels, flat cartoons and marbles shipped through the port of Walvis Bay and Lüderitz. During the period under review, a total of 503 800 tonnes of goods were shipped via sea compared to 324 268 tonnes of cargo shipped in November 2022.

Chart 4: Sea Landed Index, Percentage Change



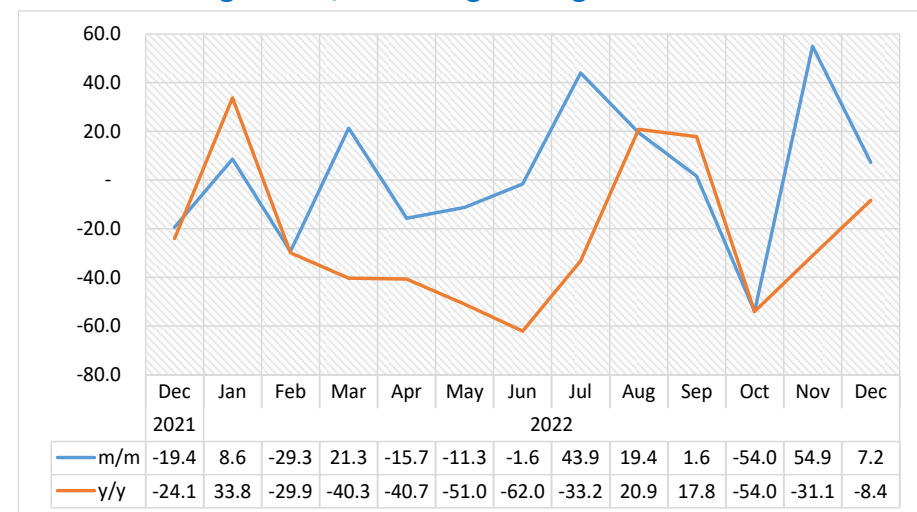
- The **Sea Landed Index** (Chart 4) slowed recording a growth of 14.3 percent in December 2022, compared to a growth of 34.9 percent registered in the preceding month. Conversely, a decline of 18.6 percent was noted in the year on year.
- The increase recorded monthly stemmed from the high volumes of landings for petroleum, frozen fish, sulphuric acid, copper concentrate, and the landing of wheat products in containers destined for Namib Mills imported through the ports of Walvis Bay and Lüderitz. A total of 319 228 tonnes of goods were landed by sea during the month under review.

Chart 5: Sea Trans shipped Index, Percentage Change¹



- The **Sea Trans shipped Index** (Chart 5) for December 2022 declined, registering a monthly reduction of 69.6 percent, downward from a growth of 262.4 percent recorded in the preceding month. However, the index recorded a huge increase of 2143.4 percent year on year.
- The decline recorded on monthly basis stemmed mainly from the lower volumes of trans-shipped containers for general items, frozen fish, frozen products, empty tanks, dangerous cargo and containers of goods exported and imported through the port of Walvis Bay.
- The total volume of goods trans-shipped by sea during the month of December 2022 amounted to 12 227 tonnes compared to 40 186 tonnes and 545 tonnes that were registered in November 2022 and the corresponding month of 2021, respectively.

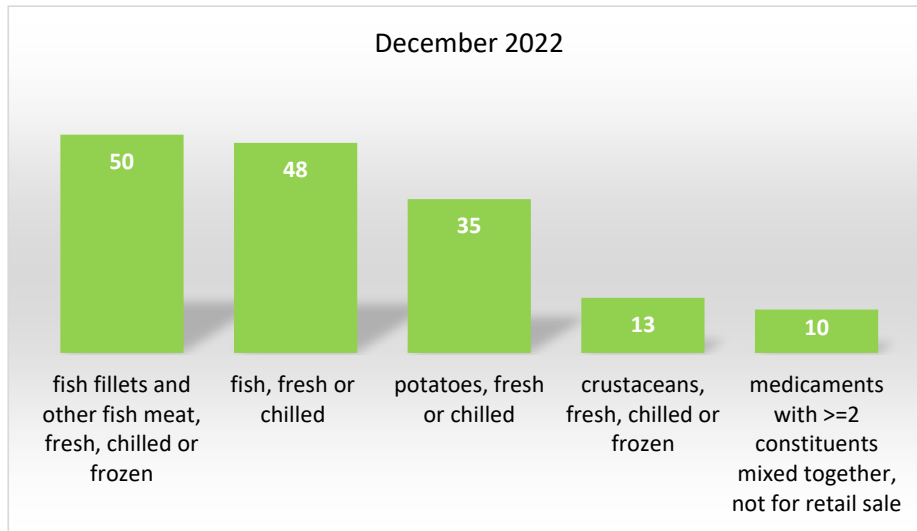
Chart 6: Air Cargo Index, Percentage Change



- The **Air Cargo Index** (Chart 6) slowed down on monthly basis by recording a growth of 7.2 percent in December 2022, compared to a growth of 54.9 percent registered in the preceding month. However, the index posted a yearly decline of 8.4 percent.
- A total of 342 tonnes of goods were transported via air in the month of December 2022 compared to 319 tonnes and 373 tonnes recorded in November 2022 and in the corresponding period of 2021, respectively.

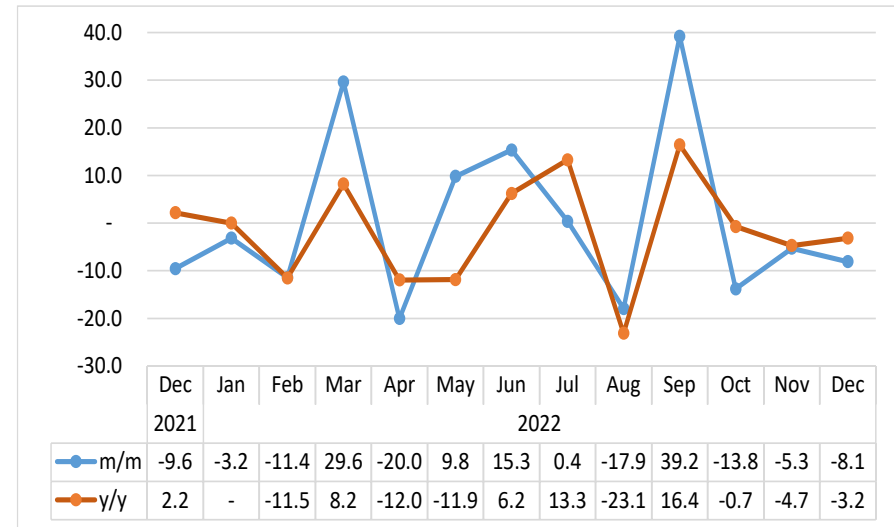
¹ This graph is limited to -100 percent for better readability.

Chart 7: Top Five Type of Consignment by Air, Tonnes



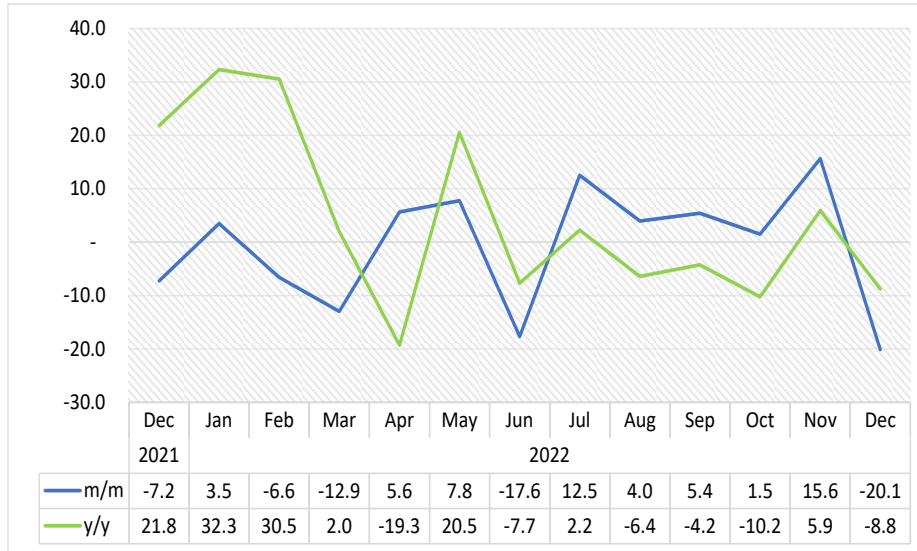
- Looking at the type of consignment transported by air ; ‘Fish fillets and other fish meat, fresh, chilled or frozen’ accounted for most of the consignment (50 tonnes), followed by ‘Fish, fresh or chilled’ (48 tonnes) and ‘Potatoes, fresh or chilled’ (35 tonnes) in second and third place, respectively.
- Crustaceans, fresh, chilled or frozen and ‘Medicaments with constituents mixed together not for retail sale’ were among the top five transported goods by air during the review month (Chart 7).

Chart 8: Rail Cargo Index, Percentage Change



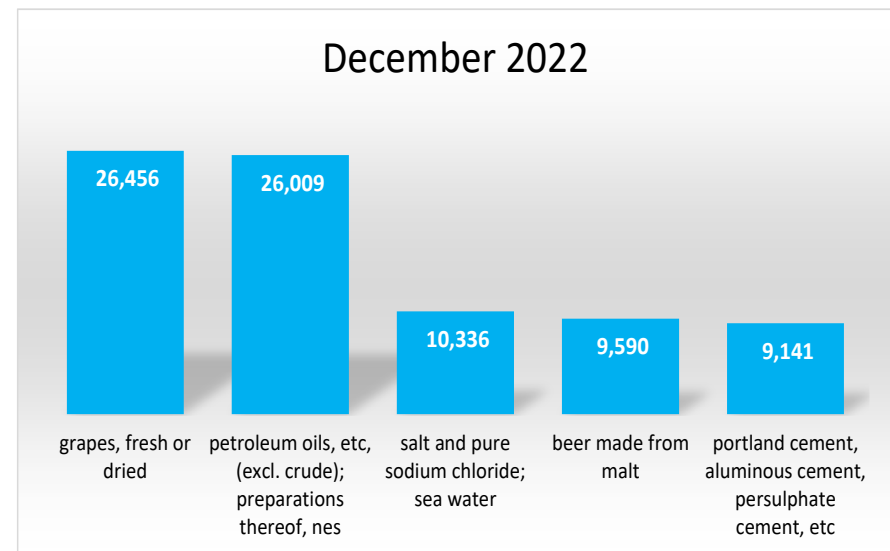
- The **Rail Cargo Index** (Chart 8) in December 2022 contracted by 8.1 percent on a monthly basis, in relation to a decline of 5.3 percent posted in the previous month. Additionally, the index declined by 3.2 percent year on year.
- The decline registered on monthly basis emanated mainly from the low volumes of Manganese Ore transported via rail. A total of 107 634 tonnes of cargo were transported via rail during the month under review, compared to 117 128 tonnes recorded in November 2022 and 111 165 tonnes registered in the corresponding month of 2021.

Chart 9: Road Cargo Index, Percentage Change



- The **Road Cargo Index** (Chart 9) declined monthly by 20.1 percent in December 2022, in contrast to a growth of 15.6 percent that was posted a month earlier. Moreover, the index recorded a decline of 8.8 percent year on year.

Chart 10: Top Five Type of Cargo by Road, Tonnes



- Goods that were transported by road in December 2022 amounted to 321 184 tonnes. ‘Grapes, fresh or dried’ (26 456 tonnes) and petroleum oils (26 009 tonnes) accounted for the highest weight. Whereas consignment of ‘Salt and pure sodium chloride, seawater’ (10 336 tonnes), Beer made from malt (9 590 tonnes) and ‘Portland cement, aluminous cement, persulphate’ (9 141 tonnes) were among the top five commodities transported by road (Chart 10).

Table 1: Cargo by mode of transport in tonnes

Year	Month	Rail cargo	Road cargo	Air cargo	Sea Landed	Sea Shipped	Sea Trans-shipped
2019	Jan	125,512	230,550	483	315,337	208,347	16,286
	Feb	121,870	244,618	566	350,383	142,149	24,124
	Mar	136,119	272,290	503	568,785	195,844	5,217
	Apr	147,746	305,766	672	106,737	135,080	10,027
	May	149,901	307,518	707	235,089	162,965	15,143
	Jun	140,177	327,346	585	293,723	161,821	13,734
	Jul	155,823	362,757	617	290,805	120,255	4,301
	Aug	134,679	350,945	675	290,838	216,371	4,302
	Sep	143,888	336,968	583	298,567	122,366	2,611
	Oct	128,491	425,822	419	207,311	169,748	7,555
	Nov	153,331	374,019	567	250,639	176,039	22,143
	Dec	130,022	300,383	694	346,415	267,614	4,953
2020	Jan	124,661	281,305	641	172,554	225,880	10,570
	Feb	119,235	260,778	530	498,254	183,758	6,126
	Mar	116,267	258,529	279	243,494	273,582	10,633
	Apr	96,506	171,759	25	104,862	96,192	82,393
	May	105,771	215,121	325	218,352	233,748	67,622
	Jun	137,334	244,530	94	156,370	200,474	40,337
	Jul	140,141	315,101	101	229,253	139,011	65,397
	Aug	116,133	285,009	190	342,226	235,835	40,068
	Sep	172,107	294,764	222	401,518	376,935	4,095
	Oct	150,408	294,890	219	183,762	176,081	6,175
	Nov	146,555	355,067	308	342,464	287,662	3,546
	Dec	108,787	288,974	492	307,274	171,471	9,929

Table 1: cont....

	Month	Rail cargo	Road cargo	Air cargo	Sea Landed	Sea Shipped	Sea Trans-shipped
2021	Jan	107,641	275,398	303	398,439	199,624	16,420
	Feb	107,757	260,740	409	321,256	254,083	3,863
	Mar	114,211	290,517	582	315,040	230,399	4,986
	Apr	112,231	387,713	494	136,333	158,391	5,956
	May	123,098	279,922	530	198,667	202,549	6,174
	Jun	117,829	300,999	674	298,812	246,107	11,287
	Jul	110,889	305,752	552	162,996	201,612	47,081
	Aug	134,100	347,315	364	261,617	235,889	73,143
	Sep	123,279	357,723	380	329,971	376,386	69,625
	Oct	124,581	387,360	448	339,013	233,193	12,247
	Nov	122,938	379,542	463	257,163	243,513	314
	Dec	111,165	352,047	373	392,110	199,402	545
2022	Jan	107,641	364,310	405	258,144	252,899	3,029
	Feb	95,348	340,340	286	473,804	167,884	21,382
	Mar	123,575	296,300	348	361,293	353,786	6,814
	Apr	98,815	313,006	293	237,328	132,793	2,689
	May	108,501	337,366	260	281,553	382,805	3,164
	Jun	125,152	277,835	256	354,258	292,154	3,256
	Jul	125,604	312,627	368	285,087	250,749	8,277
	Aug	103,071	325,034	440	396,095	325,079	1,218
	Sep	143,517	342,624	447	204,694	274,037	4,550
	Oct	123,687	347,699	206	207,041	362,174	11,089
	Nov	117,128	402,064	319	279,309	324,268	40,186
	Dec	107,634	321,184	342	319,228	503,800	12,227

Table 2: Cargo Index

Year	Month	Rail cargo Index	Road cargo Index	Air cargo Index	Sea Landed	Sea Shipped	Sea Trans shipped	Total Sea Cargo Index	Composite Cargo Index
2019	Jan	97.9	81.5	95.7	104.1	203.7	23.1	113.6	101.1
	Feb	95.1	86.5	112.1	115.7	139.0	34.3	108.7	99.6
	Mar	106.2	96.3	99.6	187.8	191.5	7.4	161.9	132.9
	Apr	115.3	108.1	133.2	35.2	132.1	14.3	53.0	79.6
	May	117.0	108.7	140.0	77.6	159.3	21.5	86.9	98.2
	Jun	109.4	115.7	115.9	97.0	158.2	19.5	98.7	105.7
	Jul	121.6	128.2	122.2	96.0	117.6	6.1	87.4	105.4
	Aug	105.1	124.1	133.7	96.0	211.6	6.1	107.6	112.5
	Sep	112.3	119.1	115.6	98.6	119.6	3.7	89.1	102.0
	Oct	100.3	150.5	82.9	68.5	166.0	10.7	80.9	105.9
	Nov	119.6	132.2	112.3	82.8	172.1	31.5	94.4	110.1
	Dec	101.4	106.2	137.5	114.4	261.7	7.0	130.2	118.4
2020	Jan	97.3	99.4	127.0	57.0	220.9	15.0	86.0	92.0
	Feb	93.0	92.2	104.9	164.5	179.7	8.7	144.7	120.5
	Mar	90.7	91.4	55.2	80.4	267.5	15.1	111.0	101.8
	Apr	75.3	60.7	5.0	34.6	94.1	117.1	59.6	62.2
	May	82.5	76.0	64.4	72.1	228.6	96.1	109.3	94.8
	Jun	107.2	86.4	18.7	51.6	196.0	57.3	83.5	87.8
	Jul	109.3	111.4	20.0	75.7	135.9	92.9	91.2	100.2
	Aug	90.6	100.8	37.6	113.0	230.6	56.9	130.0	114.9
	Sep	134.3	104.2	43.9	132.6	368.6	5.8	164.6	140.9
	Oct	117.4	104.2	43.3	60.7	172.2	8.8	77.0	91.5
	Nov	114.3	125.5	61.0	113.1	281.3	5.0	133.3	128.0
	Dec	84.9	102.2	97.4	101.5	167.7	14.1	102.8	100.0

Table 2: Cargo Index continue.....

Year	Month	Rail cargo Index	Road cargo Index	Air cargo Index	Sea Landed	Sea Shipped	Sea Trans shipped	Total Sea Cargo Index	Composite Cargo Index
2021	Jan	84.0	97.4	60.0	131.6	195.2	23.3	129.2	112.5
	Feb	84.1	92.2	81.0	106.1	248.4	5.5	121.8	106.9
	Mar	89.1	102.7	115.3	104.0	225.3	7.1	115.8	107.8
	Apr	87.6	137.1	98.0	45.0	154.9	8.5	63.2	90.3
	May	96.0	99.0	105.1	65.6	198.0	8.8	85.7	91.4
	Jun	91.9	106.4	133.5	98.7	240.6	16.0	117.0	110.0
	Jul	86.5	108.1	109.3	53.8	197.1	66.9	86.6	93.4
	Aug	104.6	122.8	72.1	86.4	230.6	103.9	120.0	118.7
	Sep	96.2	126.5	75.2	109.0	368.0	98.9	163.2	141.8
	Oct	97.2	136.9	88.7	112.0	228.0	17.4	122.9	123.7
	Nov	95.9	134.2	91.7	84.9	238.1	0.4	105.4	113.2
	Dec	86.7	124.5	73.9	129.5	195.0	0.8	124.5	119.0
2022	Jan	84.0	128.8	80.3	85.3	247.3	4.3	108.1	111.2
	Feb	74.4	120.3	56.8	156.5	164.2	30.4	139.5	123.9
	Mar	96.4	104.7	68.9	119.3	345.9	9.7	151.8	128.8
	Apr	77.1	110.7	58.1	78.4	129.8	3.8	78.4	88.5
	May	84.7	119.3	51.5	93.0	374.3	4.5	140.4	125.6
	Jun	97.6	98.2	50.7	117.0	285.7	4.6	136.6	118.7
	Jul	98.0	110.5	73.0	94.1	245.2	11.8	114.4	110.8
	Aug	80.4	114.9	87.2	130.8	317.9	1.7	151.9	129.8
	Sep	112.0	121.1	88.6	67.6	267.9	6.5	101.6	109.3
	Oct	96.5	122.9	40.8	68.4	354.1	15.8	122.1	118.6
	Nov	91.4	142.1	63.2	92.2	317.1	57.1	135.4	131.1
	Dec	84.0	113.5	67.8	105.4	492.6	17.4	175.7	142.6

Methodology

- Data source** : The volume data for rail cargo are sourced from Trans-Namib, while the source for road and air cargo volume data is from the Namibia Statistics Agency (Trade Statistics Sub-division). Volumes of Sea cargo, which comprises of sea-landed, sea-shipped, and sea Trans-shipped, are sourced from Namport.
- Index calculation** : The index of cargo has been weighted using the volume data in tonnes for 2015.
- Conversion** : 1 basis point = 0.01 percent