

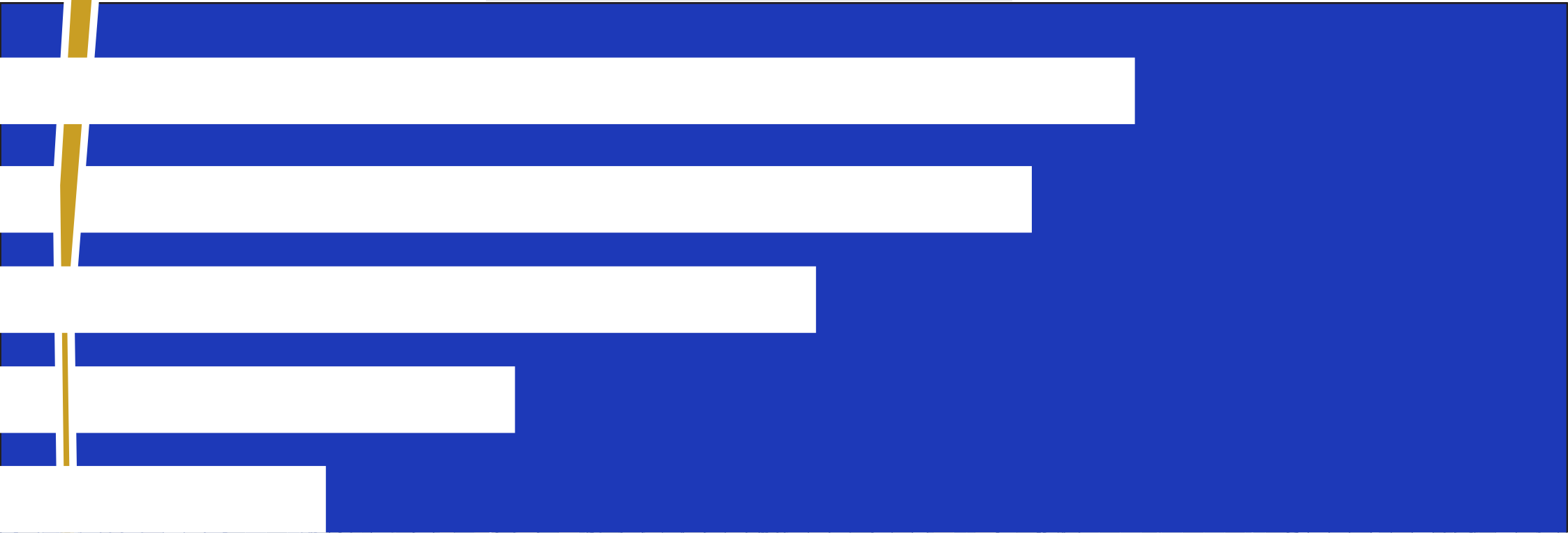


Namibia Statistics  
Agency

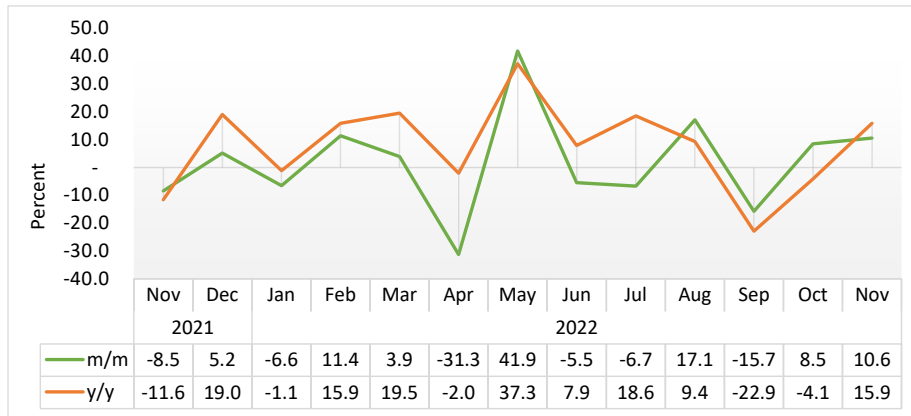


# TRANSPORT

SECTORAL REPORT - NOVEMBER 2022

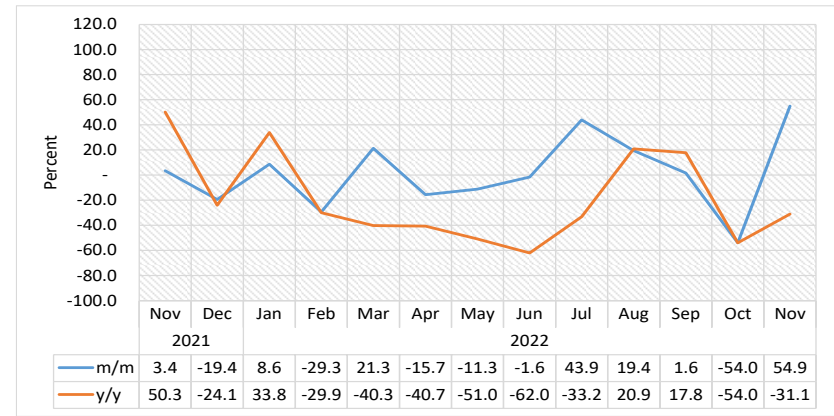


**Chart 1: Transport Composite Cargo Index, Percentage Change**



- The **Transport Composite Cargo Index** (Chart 1) consists of Road Cargo, Air Cargo, Sea Cargo, and Rail Cargo. The index increased recording a growth of 10.6 percent in November 2022, compared to a growth of 8.5 percent recorded in the previous month. Moreover, the index posted a yearly increase of 15.9 percent.
- The monthly improvement is attributed to the high volumes of cargo for consignments transported during October 2022 via air, road and sea.
- Namibia transported 1 163 273 tonnes of cargo (through Sea, Rail, Road, and Air) in November 2022, compared to 1 051 896 tonnes and 1 003 933 tonnes that were transported during the preceding month and the corresponding month of 2021, respectively.

**Chart 2: Air Cargo Index, Percentage Change**



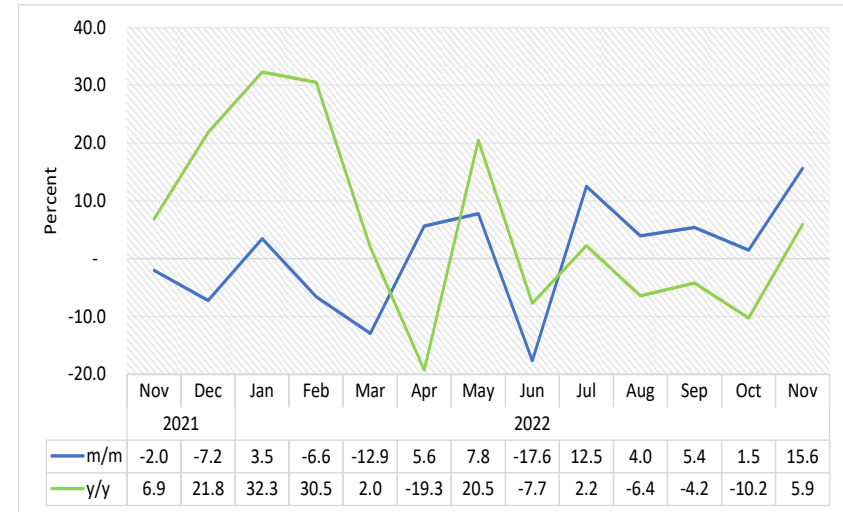
- The **Air Cargo Index** (Chart 2) rebounded on monthly basis by recording a growth of 54.9 percent in November 2022, in contrast to a deterioration of 54.0 percent registered in the preceding month. However, the index posted a yearly decline of 31.1 percent.
- A total of 319 tonnes of goods were transported via air in the month of November 2022 compared to 206 tonnes and 463 tonnes recorded in October 2022 and November 2021, respectively.

**Chart 3: Top Five Air Consignment by Type in Tonnes**



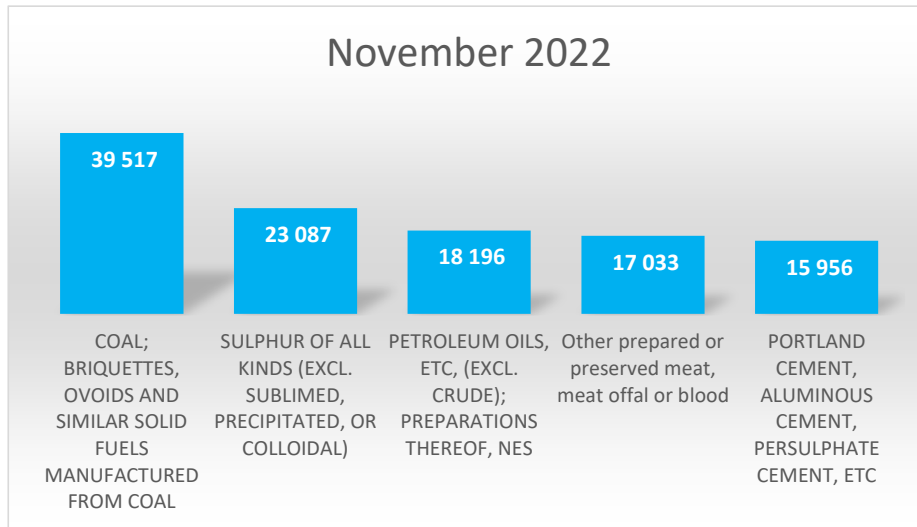
- In terms of type of air transport consignment, ‘Other aircraft and spacecraft’ weighed the most measuring 20 tonnes, followed by ‘Medicaments of mixed or unmixed products for retail sale’ with a weight of 14 tonnes in second place.
- ‘Medicaments with constituents mixed not for retail sale’, Parts and accessories of the motor vehicles of 87.01 to 87.05’ and ‘Electrical apparatus for line telephony or line telegraphy’ were among the top five transported goods by air during the review month (Chart 3).

**Chart 4: Road Cargo Index, Percentage Change**



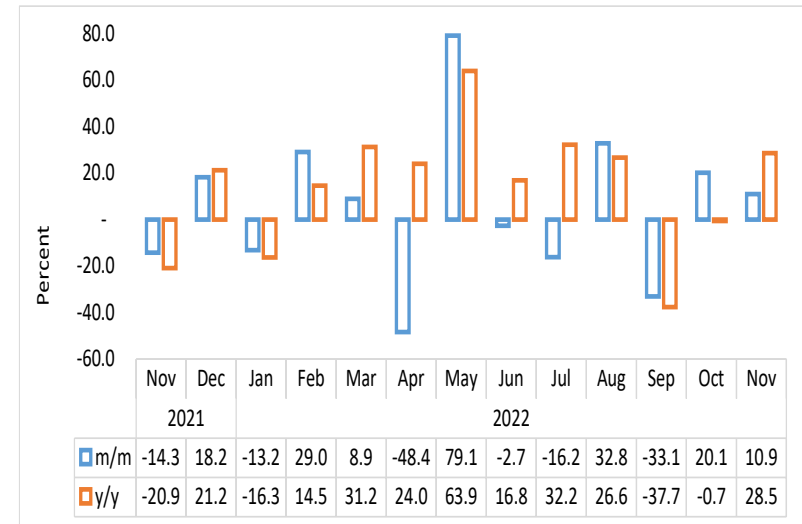
- The Road Cargo Index (Chart 4) increased monthly by 15.6 percent in November 2022, as opposed to a growth of 1.5 percent that was recorded in the previous month. Additionally, the index recorded a growth of 5.9 percent year on year.

**Chart 5: Top Five Road Cargo by Type of Product in Tonnes**



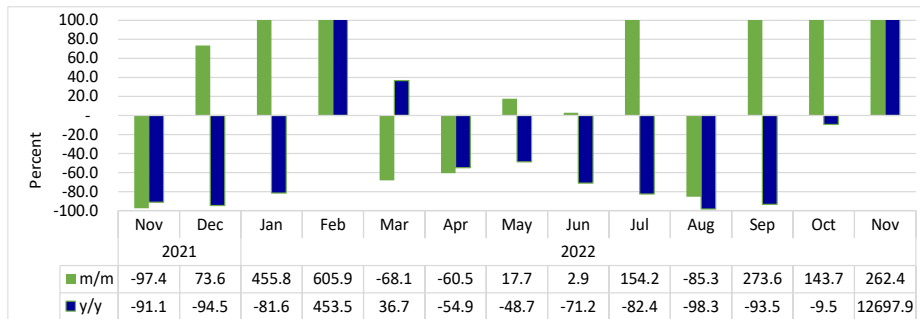
- The weight of goods that was transported by road in November 2022 amounted to 402 064 tonnes. Coal accounted the highest weight amounting to 39 517 tonnes. Whereas consignment ‘Sulphur of all kinds (excluding sublimed, precipitated, or colloidal)’ and Petroleum oils weighed 23 087 tonnes and 18 196 tonnes, respectively (Chart 5).

**Chart 6: Sea Cargo Index, Percentage Change**



- The **Sea Cargo Index** (Chart 6) which consists of Sea landed, Sea-Shipped and Sea Trans-shipped recorded an increase of 10.9 percent in November 2022, downward from a growth of 20.1 percent posted a month earlier. Moreover, the index increased by 28.5 percent year on year.
- The increase observed on a monthly basis in the Sea Cargo Index is mainly associated with the sea trans-shipped cargo and sea landed that registered high volumes of goods transported.

**Chart 7: Sea Trans shipped Index, Percentage Change<sup>1</sup>**

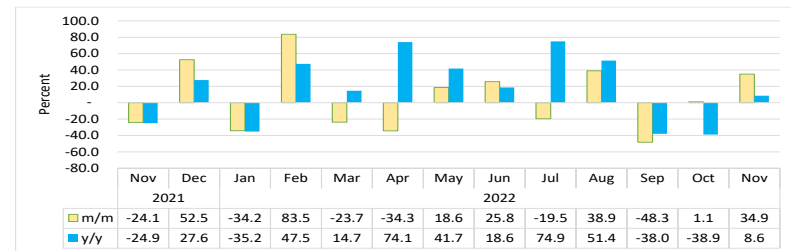


- The **Sea Trans shipped Index** (Chart 7) for November 2022 increased during the period under review, registering a growth of 262.4 percent on monthly basis, upward from a growth of 143.7 percent recorded in the preceding month. Moreover, the index recorded a huge increase of 12 697.9 percent year on year.
- The increases recorded monthly and on yearly basis stemmed mainly from the high volumes of the general increase in trans-shipped containers for general items, frozen fish, frozen products, dangerous cargo and containers of goods exported and imported through the port of Walvis Bay.
- These huge increases were necessitated as the Transnet Port in South Africa was experiencing unrest as the freight rail and port employees ongoing strike since October 2022. Therefore, some containerized cargo that would have gone through the Transnet ports were re-routed to go through the port of Walvis Bay, hence the recorded increase in trans-shipments.

<sup>1</sup> This graph is limited to -100 percent and 100 percent for better readability.

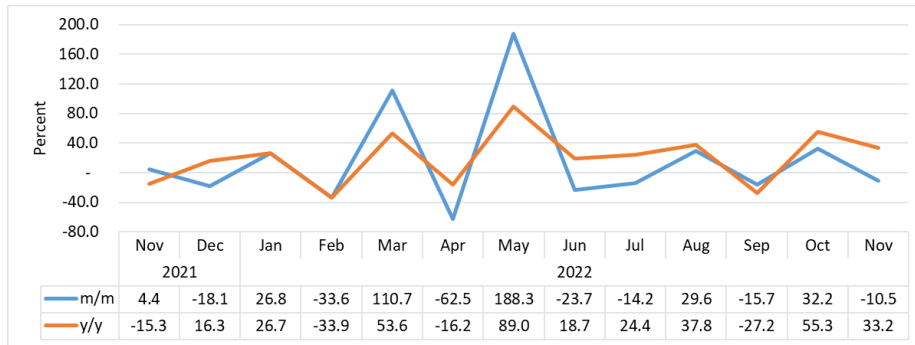
- The total volume of goods trans-shipped by sea during the month of November 2022 amounted to 40 186 tonnes compared to 11 089 tonnes and 314 tonnes that was registered in October 2022 and during the same month of 2021, respectively.

**Chart 8: Sea Landed Index, Percentage Change**



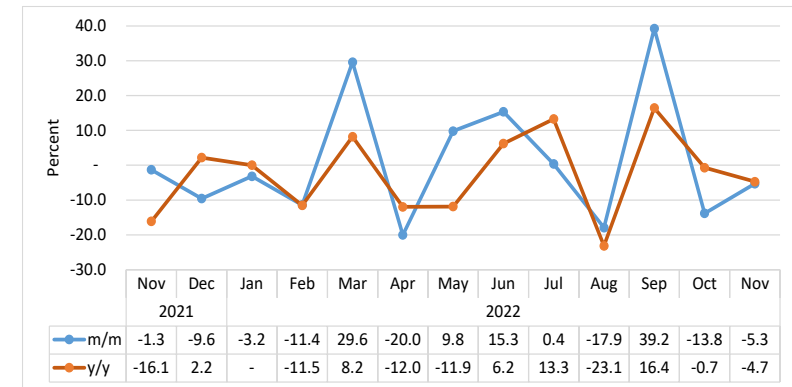
- The **Sea Landed Index** (Chart 8) increased during the period under review, registering a growth of 34.9 percent on monthly basis as opposed to a growth of 1.1 percent recorded in the preceding month. Additionally, the index recorded an increase of 8.6 percent year on year.
- The increase recorded monthly stemmed from the high volumes of landings for Petroleum, Sulphuric acid, copper concentrate, Manganese ore, frozen fish, frozen poultry, wet fish, sugar, chemicals and the landing of vehicles in containers imported through the ports of Walvis Bay and Luderitz. A total of 279 309 tonnes of goods were landed by sea during the month of November 2022.

**Chart 9: Sea Shipped Index, Percentage Change**



- The Sea Shipped Index (Chart 9) for November 2022 declined by 10.5 percent monthly, downward from a growth of 32.2 percent posted in the preceding month. Conversely, the index increased by 33.2 percent year on year.
- The decline recorded monthly was mainly derived from low volumes of cargo for exports of scrap steels, frozen fish, salt bagged, marbles, flat cartoons shipped through the port of Walvis Bay and Lüderitz. During the period under review, a total of 324 268 tonnes of goods were shipped via sea compared 362 174 tonnes of cargo shipped in October 2022.
- The total of 643 762 tonnes of cargo were transported by sea during November 2022, compared to 580 305 tonnes recorded in the preceding month. Whereas the total volume of cargo shipped for November 2021 stood at 500 991 tonnes.

**Chart 10: Rail Cargo Index, Percentage Change**



- The Rail Cargo Index (Chart 10) in November 2022 contracted by 5.3 percent on a monthly basis, in relation to a decline of 13.8 percent registered a month earlier. Additionally, the index declined by 4.7 percent year on year, better-off when compared to a deterioration of 16.1 percent recorded in the corresponding month of 2021.
- The decline registered on monthly basis emanated mainly from the low volumes of sulphuric acid transported via rail.
- Cargo amounting to 117 128 tonnes were transported via rail during the month under review, compared to 123 687 tonnes recorded in October 2022 and 122 938 tonnes posted in the corresponding month of 2021.

**Table 1: Cargo by mode of transport in tonnes**

Year	Month	Rail cargo	Road cargo	Air cargo	Sea Landed	Sea Shipped	Sea Trans-shipped
2018	Jan	124,052	218,646	861	374,413	187,977	34,150
	Feb	108,727	236,009	609	233,925	199,606	22,073
	Mar	98,848	317,118	587	388,880	141,491	27,239
	Apr	113,416	235,798	592	144,460	112,868	10,854
	May	100,151	302,863	564	218,097	180,542	23,582
	Jun	118,956	243,788	598	320,130	168,048	22,095
	Jul	127,584	263,830	710	250,551	148,565	11,299
	Aug	162,308	274,970	805	357,105	168,120	10,711
	Sep	109,458	283,016	636	408,833	168,553	11,935
	Oct	159,069	308,614	393	326,174	124,195	11,987
	Nov	153,398	312,839	517	339,922	234,252	18,227
	Dec	105,608	321,578	602	186,495	157,301	2,596
2019	Jan	125,512	230,550	483	315,337	208,347	16,286
	Feb	121,870	244,618	566	350,383	142,149	24,124
	Mar	136,119	272,290	503	568,785	195,844	5,217
	Apr	147,746	305,766	672	106,737	135,080	10,027
	May	149,901	307,518	707	235,089	162,965	15,143
	Jun	140,177	327,346	585	293,723	161,821	13,734
	Jul	155,823	362,757	617	290,805	120,255	4,301
	Aug	134,679	350,945	675	290,838	216,371	4,302
	Sep	143,888	336,968	583	298,567	122,366	2,611
	Oct	128,491	425,822	419	207,311	169,748	7,555
	Nov	153,331	374,019	567	250,639	176,039	22,143
	Dec	130,022	300,383	694	346,415	267,614	4,953
2020	Jan	124,661	281,305	641	172,554	225,880	10,570
	Feb	119,235	260,778	530	498,254	183,758	6,126
	Mar	116,267	258,529	279	243,494	273,582	10,633
	Apr	96,506	171,759	25	104,862	96,192	82,393
	May	105,771	215,121	325	218,352	233,748	67,622
	Jun	137,334	244,530	94	156,370	200,474	40,337
	Jul	140,141	315,101	101	229,253	139,011	65,397
	Aug	116,133	285,009	190	342,226	235,835	40,068
	Sep	172,107	294,764	222	401,518	376,935	4,095
	Oct	150,408	294,890	219	183,762	176,081	6,175
	Nov	146,555	355,067	308	342,464	287,662	3,546
	Dec	108,787	288,974	492	307,274	171,471	9,929

**Table 1: cont....**

Year	Month	Rail cargo	Road cargo	Air cargo	Sea Landed	Sea Shipped	Sea Trans-shipped
2021	Jan	107,641	275,398	303	398,439	199,624	16,420
	Feb	107,757	260,740	409	321,256	254,083	3,863
	Mar	114,211	290,517	582	315,040	230,399	4,986
	Apr	112,231	387,713	494	136,333	158,391	5,956
	May	123,098	279,922	530	198,667	202,549	6,174
	Jun	117,829	300,999	674	298,812	246,107	11,287
	Jul	110,889	305,752	552	162,996	201,612	47,081
	Aug	134,100	347,315	364	261,617	235,889	73,143
	Sep	123,279	357,723	380	329,971	376,386	69,625
	Oct	124,581	387,360	448	339,013	233,193	12,247
	Nov	122,938	379,542	463	257,163	243,513	314
	Dec	111,165	352,047	373	392,110	199,402	545
2022	Jan	107,641	364,310	405	258,144	252,899	3,029
	Feb	95,348	340,340	286	473,804	167,884	21,382
	Mar	123,575	296,300	348	361,293	353,786	6,814
	Apr	98,815	313,006	293	237,328	132,793	2,689
	May	108,501	337,366	260	281,553	382,805	3,164
	Jun	125,152	277,835	256	354,258	292,154	3,256
	Jul	125,604	312,627	368	285,087	250,749	8,277
	Aug	103,071	325,034	440	396,095	325,079	1,218
	Sep	143,517	342,624	447	204,694	274,037	4,550
	Oct	123,687	347,699	206	207,041	362,174	11,089
	Nov	117,128	402,064	319	279,309	324,268	40,186

**Table 2: Cargo Index**

Year	Month	Rail cargo Index	Road cargo Index	Air cargo Index	Sea Landed	Sea Shipped	Sea Trans shipped	Total Sea Cargo Index	Composite Cargo Index
2018	Jan	96.8	77.3	170.5	123.6	183.8	48.5	125.5	106.0
	Feb	84.8	83.4	120.7	77.3	195.2	31.4	95.8	90.3
	Mar	77.1	112.1	116.3	128.4	138.3	38.7	117.3	109.8
	Apr	88.5	83.4	117.4	47.7	110.4	15.4	56.4	69.7
	May	78.1	107.1	111.7	72.0	176.5	33.5	88.8	93.1
	Jun	92.8	86.2	118.6	105.7	164.3	31.4	107.3	98.5
	Jul	99.5	93.3	140.7	82.7	145.3	16.1	86.3	90.5
	Aug	126.6	97.2	159.5	117.9	164.4	15.2	112.7	109.8
	Sep	85.4	100.0	125.9	135.0	164.8	17.0	124.0	110.8
	Oct	124.1	109.1	77.8	107.7	121.4	17.0	97.2	104.9
	Nov	119.7	110.6	102.3	112.3	229.0	25.9	124.6	119.4
	Dec	82.4	113.7	119.2	61.6	153.8	3.7	72.9	87.3
2019	Jan	97.9	81.5	95.7	104.1	203.7	23.1	113.6	101.1
	Feb	95.1	86.5	112.1	115.7	139.0	34.3	108.7	99.6
	Mar	106.2	96.3	99.6	187.8	191.5	7.4	161.9	132.9
	Apr	115.3	108.1	133.2	35.2	132.1	14.3	53.0	79.6
	May	117.0	108.7	140.0	77.6	159.3	21.5	86.9	98.2
	Jun	109.4	115.7	115.9	97.0	158.2	19.5	98.7	105.7
	Jul	121.6	128.2	122.2	96.0	117.6	6.1	87.4	105.4
	Aug	105.1	124.1	133.7	96.0	211.6	6.1	107.6	112.5
	Sep	112.3	119.1	115.6	98.6	119.6	3.7	89.1	102.0
	Oct	100.3	150.5	82.9	68.5	166.0	10.7	80.9	105.9
	Nov	119.6	132.2	112.3	82.8	172.1	31.5	94.4	110.1
	Dec	101.4	106.2	137.5	114.4	261.7	7.0	130.2	118.4
2020	Jan	97.3	99.4	127.0	57.0	220.9	15.0	86.0	92.0
	Feb	93.0	92.2	104.9	164.5	179.7	8.7	144.7	120.5
	Mar	90.7	91.4	55.2	80.4	267.5	15.1	111.0	101.8
	Apr	75.3	60.7	5.0	34.6	94.1	117.1	59.6	62.2
	May	82.5	76.0	64.4	72.1	228.6	96.1	109.3	94.8
	Jun	107.2	86.4	18.7	51.6	196.0	57.3	83.5	87.8
	Jul	109.3	111.4	20.0	75.7	135.9	92.9	91.2	100.2
	Aug	90.6	100.8	37.6	113.0	230.6	56.9	130.0	114.9
	Sep	134.3	104.2	43.9	132.6	368.6	5.8	164.6	140.9
	Oct	117.4	104.2	43.3	60.7	172.2	8.8	77.0	91.5
	Nov	114.3	125.5	61.0	113.1	281.3	5.0	133.3	128.0
	Dec	84.9	102.2	97.4	101.5	167.7	14.1	102.8	100.0

**Table 2: Cargo Index continue.....**

Year	Month	Rail cargo Index	Road cargo Index	Air cargo Index	Sea Landed	Sea Shipped	Sea Trans shipped	Total Sea Cargo Index	Composite Cargo Index
2021	Jan	84.0	97.4	60.0	131.6	195.2	23.3	129.2	112.5
	Feb	84.1	92.2	81.0	106.1	248.4	5.5	121.8	106.9
	Mar	89.1	102.7	115.3	104.0	225.3	7.1	115.8	107.8
	Apr	87.6	137.1	98.0	45.0	154.9	8.5	63.2	90.3
	May	96.0	99.0	105.1	65.6	198.0	8.8	85.7	91.4
	Jun	91.9	106.4	133.5	98.7	240.6	16.0	117.0	110.0
	Jul	86.5	108.1	109.3	53.8	197.1	66.9	86.6	93.4
	Aug	104.6	122.8	72.1	86.4	230.6	103.9	120.0	118.7
	Sep	96.2	126.5	75.2	109.0	368.0	98.9	163.2	141.8
	Oct	97.2	136.9	88.7	112.0	228.0	17.4	122.9	123.7
	Nov	95.9	134.2	91.7	84.9	238.1	0.4	105.4	113.2
	Dec	86.7	124.5	73.9	129.5	195.0	0.8	124.5	119.0
2022	Jan	84.0	128.8	80.3	85.3	247.3	4.3	108.1	111.2
	Feb	74.4	120.3	56.8	156.5	164.2	30.4	139.5	123.9
	Mar	96.4	104.7	68.9	119.3	345.9	9.7	151.8	128.8
	Apr	77.1	110.7	58.1	78.4	129.8	3.8	78.4	88.5
	May	84.7	119.3	51.5	93.0	374.3	4.5	140.4	125.6
	Jun	97.6	98.2	50.7	117.0	285.7	4.6	136.6	118.7
	Jul	98.0	110.5	73.0	94.1	245.2	11.8	114.4	110.8
	Aug	80.4	114.9	87.2	130.8	317.9	1.7	151.9	129.8
	Sep	112.0	121.1	88.6	67.6	267.9	6.5	101.6	109.3
	Oct	96.5	122.9	40.8	68.4	354.1	15.8	122.1	118.6
	Nov	91.4	142.1	63.2	92.2	317.1	57.1	135.4	131.1



## Methodology

- Data source** : The volume data for rail cargo are sourced from Trans-Namib, while the source for road and air cargo volume data is from the Namibia Statistics Agency (Trade Statistics Sub-division). Volumes of Sea cargo, which comprises of sea-landed, sea-shipped and sea Trans-shipped, are sourced from Namport.
- Index calculation** : The index of cargo has been weighted using the volume data in tonnes for 2015.
- Conversion** : 1 basis point = 0.01 percent