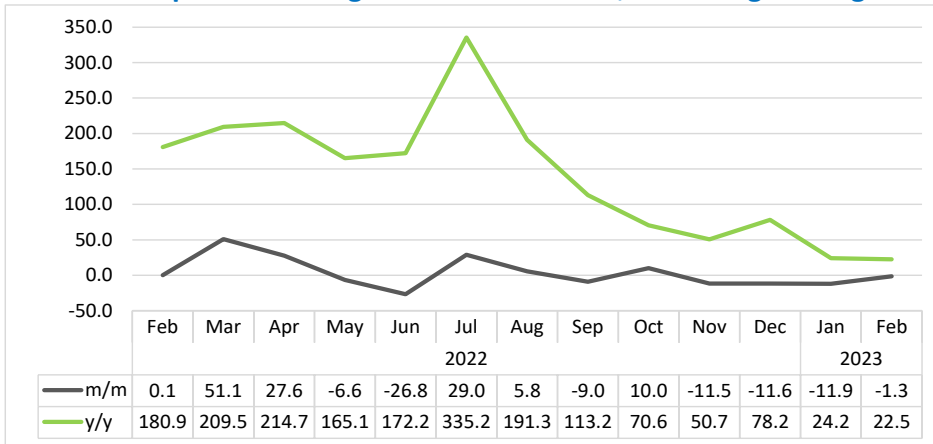


TRAVELERS ARRIVALS & DEPARTURES

FEBRUARY 2023

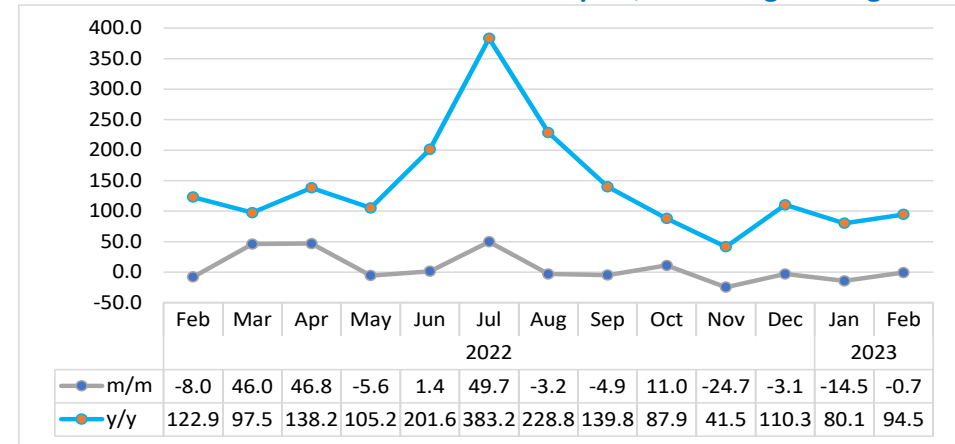


Chart 1: Composite Passenger Movement Index, Percentage Change



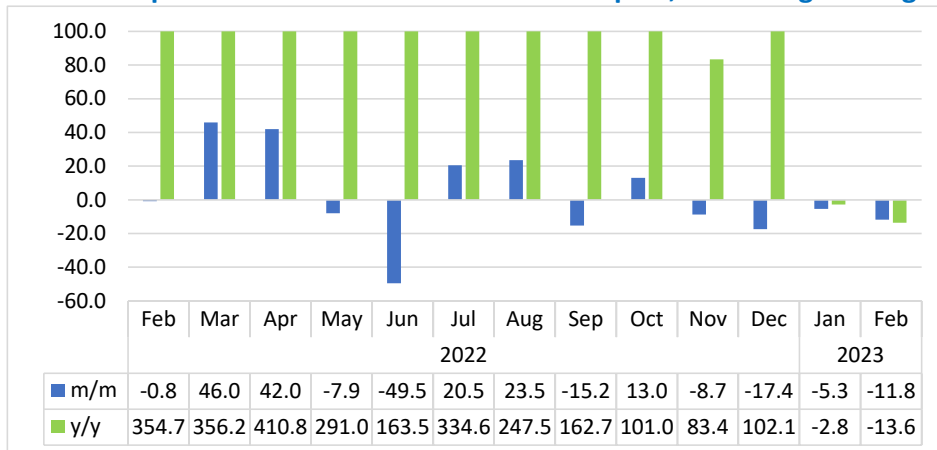
- The **Composite Passenger Movement Index** (consisting of regional, international, and domestic arrivals and departures of passengers at airports) declined on monthly basis by 1.3 percent in February 2023, compared to a reduction of 11.9 percent recorded in the previous month. On the other hand, the index slowed down recording an increase of 22.5 percent year on year (Chart 1).
- The decline registered monthly was mainly derived from reductions in the movement of passengers for Hosea Kutako airport, Walvis Bay airport and Luderitz airport. On the other hand, the rest of the airports registered monthly increases in the number of passenger movements.
- In absolute terms, a total of 57 772 passengers were recorded at airport terminals across the country during February 2023, as opposed to 58 515 passengers that were observed in the preceding month. Hosea Kutako International airport accounted for 74.3 percent followed by Walvis Bay airport (10.5%), Eros airport (9.9%), Ya Toivo airport (3.4%), Katima Mulilo airport (1.0%), Rundu airport (0.5%), Luderitz airport (0.4%) and Keetmanshop airport (0.03%).

Chart 2: Arrivals Index for Hosea Kutako Airport, Percentage Change



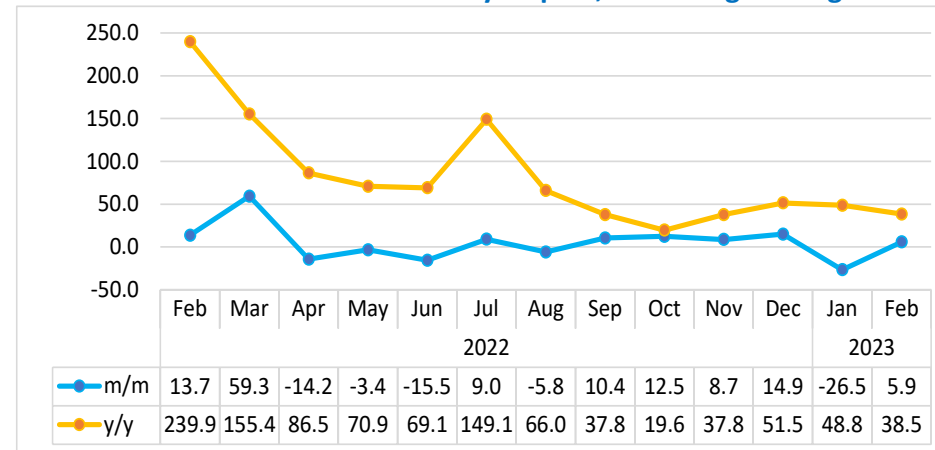
- The **Arrivals Index for Hosea Kutako Airport** (Chart 2) showed a marginal decline of 0.7 percent on a monthly basis in February 2023, compared to a reduction of 14.5 percent posted in the preceding month. Conversely, the index slowed down registering an increase of 94.5 percent, over the year.
- During February 2023, the number of passengers that arrived via Hosea Kutako Airport declined to 22 130 passengers, from 22 276 passengers recorded in the previous month, while 11 377 passengers were recorded in the corresponding month of 2022.

Chart 3: Departures Index for Hosea Kutako Airport, Percentage Change¹



- The **Departures Index for Hosea Kutako Airport** (Chart 3) declined by 11.8 percent in February 2023, compared to a reduction of 5.3 percent recorded a month earlier. Moreover, the index declined by 13.6 percent over the year.
- In absolute terms, the number of passengers that departed via Hosea Kutako airport declined to 20 795 passengers in February 2023, in contrast to 23 574 passengers in January 2023 while 24 055 passengers were registered in the corresponding month of 2022.

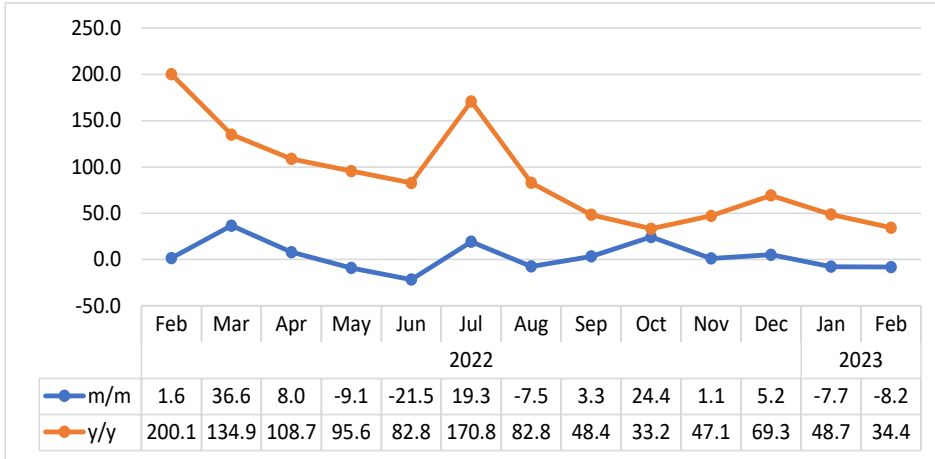
Chart 4: Arrivals Index for Walvis Bay Airport, Percentage Change



- The **Arrivals Index for Walvis Bay Airport** (Chart 4) rebounded on monthly basis, recording an increase of 5.9 percent in February 2023, an improvement from a reduction of 26.5 percent registered a month earlier. Annually, the index slowed down recording a growth of 38.5 percent.
- In absolute terms, a total number of 2 985 passengers arrived via Walvis Bay airport in February 2023 compared to 2 819 passengers recorded during the preceding month while 2 155 passengers were registered in the corresponding month of 2022.

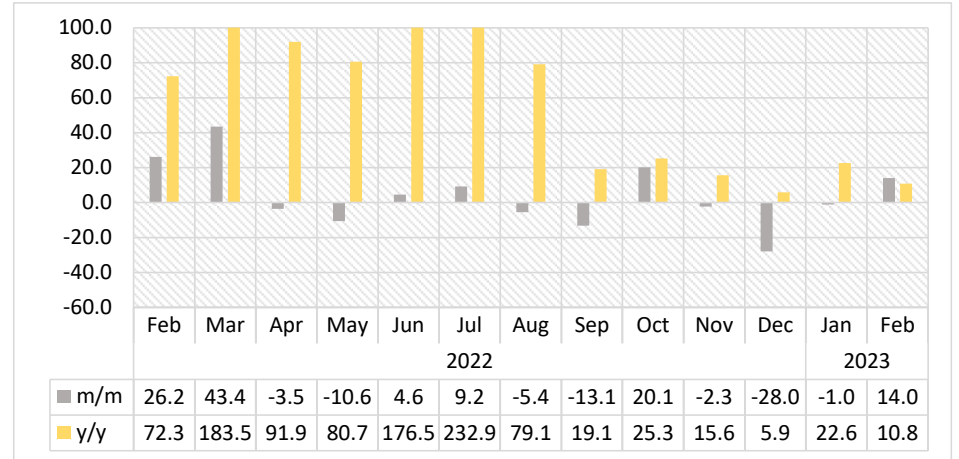
¹ This chart is limited to -60 percent and 100 percent for better presentation.

Chart 5: Departures Index for Walvis Bay Airport, Percentage Change



- The Index for **Departures for Walvis Bay Airport** (Chart 5) declined month on month by 8.2 percent in February 2023, relative to a reduction of 7.7 percent registered in the previous month. Conversely, the index slowed down recording a growth of 34.4 percent year on year.
- In absolute terms, the number of passengers that departed via Walvis Bay airport in February 2023 declined, registering 3 054 passengers as opposed to 3 326 passengers recorded in the preceding month of 2023. On the other hand, 2272 passengers were recorded in the corresponding period of 2022.

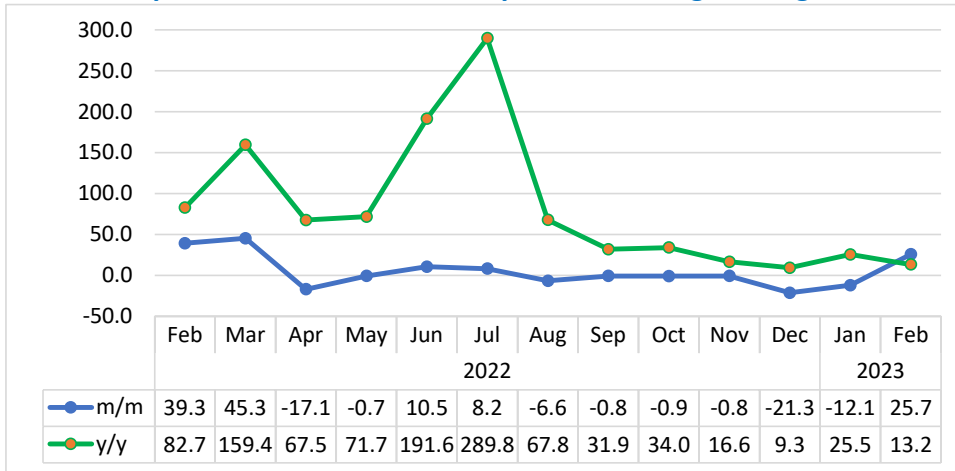
Chart 6: Arrivals Index for Eros Airport, Percentage Change²



- The **Arrivals Index for Eros Airport** (Chart 6) rebounded on a monthly basis by recording a growth of 14.0 percent in February 2023, an improvement when compared to reduction of 1.0 percent posted in the preceding month. On the other hand, the index slowed down registered an increase of 10.8 percent year on year.
- The number of passengers that arrived in February 2023 via Eros Airport increased to 2 856 passengers in contrast to 2 505 passengers and 2 578 passengers registered in the previous month of 2023 and the corresponding period in 2022, respectively.

² This chart is limited to -60 percent and 100 percent for better presentation.

Chart 7: Departures Index for Eros Airport, Percentage Change



- The Index of **Departures for Eros Airport** (Chart 7) rebounded on monthly basis by recording a growth of 25.7 percent in February 2023 upward from a reduction of 12.1 percent posted in the preceding month. In addition, the index slowed down registering an increase of 13.2 percent over the year.
- The number of passengers that departed through Eros Airport in February 2023 increased to 2 878 passengers, as opposed to 2 290 passengers and 2 542 passengers registered a month earlier and in the corresponding month of 2022, respectively.

Table 1: The indices of regional, international and domestic arrivals and departures

Year	Month	Total Passengers	Index for (Regional, International & Domestic) Arrivals	Index for (Regional, International & Domestic) Departures
2020	Jan	98.2	94.8	101.6
	Feb	92.4	92.6	92.2
	Mar	60.6	57.1	64.1
	Apr	2.0	1.1	3.0
	May	8.2	8.2	8.1
	Jun	9.4	9.1	9.7
	Jul	12.0	11.3	12.7
	Aug	7.8	7.7	8.0
	Sep	7.8	7.3	8.2
	Oct	21.2	22.8	19.6
	Nov	30.5	32.3	28.7
	Dec	34.8	37.3	32.2
2021	Jan	28.3	26.0	30.7
	Feb	19.7	19.2	20.1
	Mar	27.0	27.5	26.5
	Apr	33.9	34.2	33.5
	May	37.5	36.8	38.3
	Jun	26.8	25.6	28.0
	Jul	21.6	22.6	20.6
	Aug	34.1	34.1	34.2
	Sep	42.4	44.8	40.0
	Oct	58.3	61.2	55.4
	Nov	58.4	61.4	55.4
	Dec	43.7	44.3	43.1

Table 1: The indices of regional, international and domestic arrivals and departures continue...

Year	Month	Total Passengers	Index for (Regional, International & Domestic) Arrivals	Index for (Regional, International & Domestic) Departures
2022	Jan	55.2	41.1	69.4
	Feb	55.3	40.2	70.4
	Mar	83.5	61.8	105.5
	Apr	106.6	76.3	137.2
	May	99.5	72.1	127.3
	Jun	72.9	72.8	73.0
	Jul	94.0	101.4	86.5
	Aug	99.4	98.0	100.8
	Sep	90.4	93.0	87.8
	Oct	99.5	101.9	97.1
	Nov	88.0	83.9	92.3
	Dec	77.8	78.9	76.8
2023	Jan	68.6	66.2	70.9
	Feb	67.7	68.7	66.7

Methodology

- Background:** The information in this report looks at both citizen and non-citizen travelers' arrivals and departures.
- Data sources:** Namibia Airports Company
- Base year:** The volumes have been referenced to 2015 data as of November 2019
- Conversion:** 1 basis point = 0.01 percent