

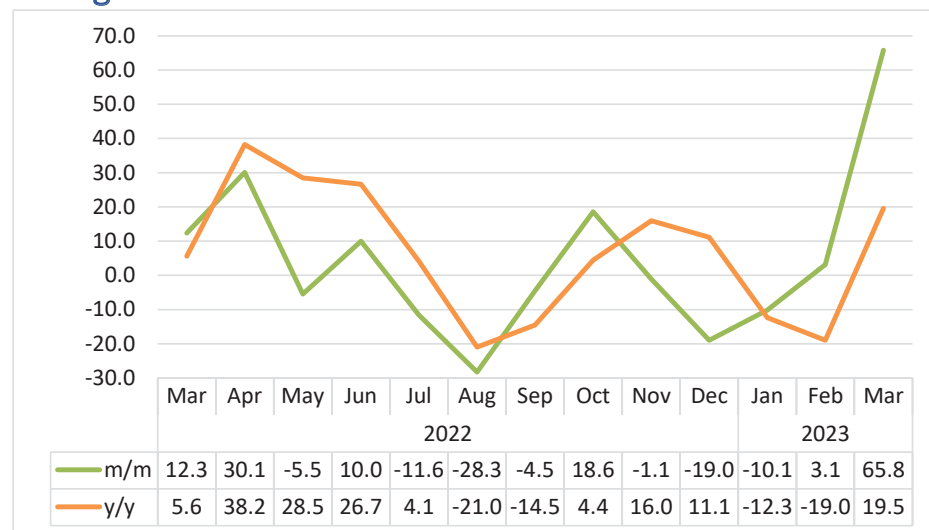


LIVESTOCK

MARCH 2023

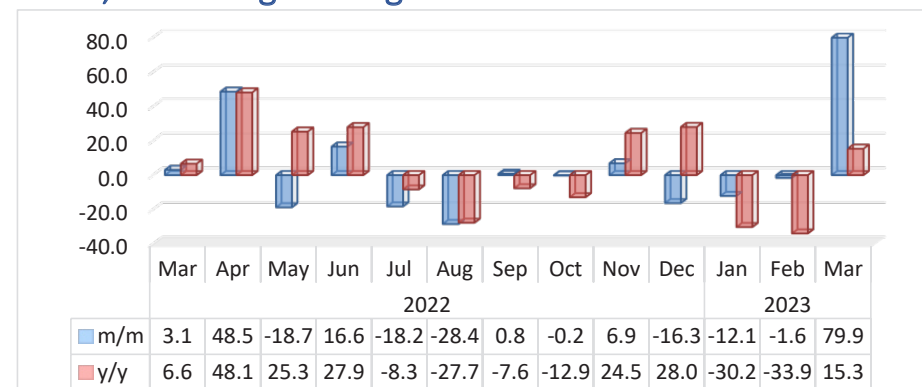


Chart 1: Livestock Marketed Composite Index, Percentage Change



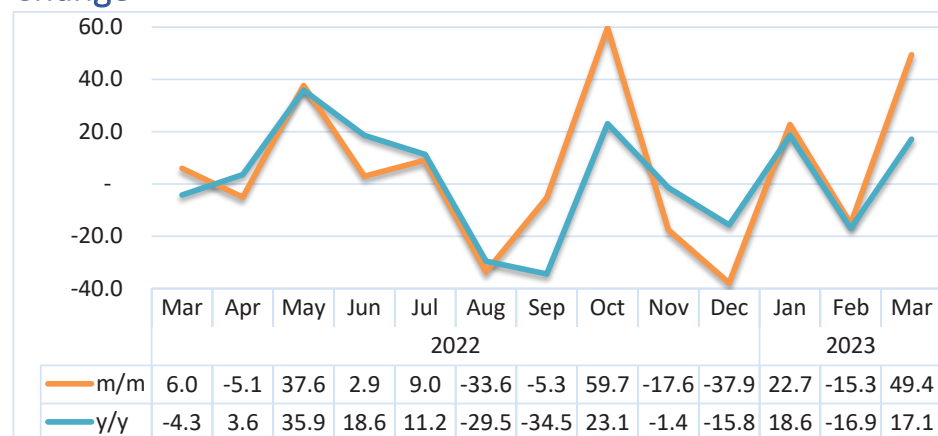
- The livestock marketed Composite Index (comprising of live animals and local slaughter) on a monthly basis in March 2023 posted a growth of 65.8 percent, compared to a growth of 3.1 percent recorded in the preceding month. Annually, the index recorded an increase of 19.5 percent.
- The increase observed in the overall livestock marketed was mainly reflected in the marketing of small stock exported live.

Chart 2: Cattle Export Approved Abattoirs and Butchers Index, Percentage Change



- The **Cattle Export Approved Abattoirs and Butchers Index** grew by 79.9 percent in the month under review compared to a decline of 1.6 percent recorded in February 2023. On an annual basis, the index recorded an increase of 15.3 percent.
- The increases were reflected in the livestock marketed at both local and international markets.

Chart 3: Live Cattle Exported on Hoof Index, Percentage Change



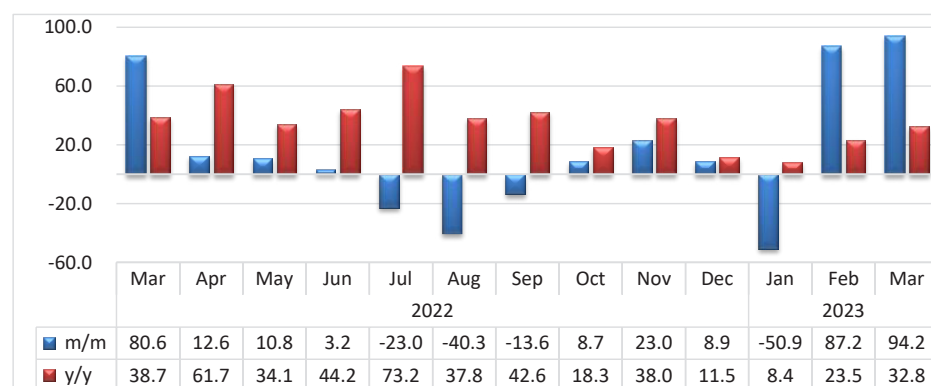
- The index for the export of live cattle on hoof grew by 49.4 percent in March 2023. This is an improvement when compared to a decline of 15.3 percent recorded in February 2023. Similarly, the index recorded a growth of 17.1 percent on an annual basis.
- During the review period, the total number of live cattle exported on hoof stood at 12 458 cattle, compared to 8 337 cattle and 10 636 registered in February 2023 and the corresponding month of 2022, respectively.
- The main export market for live cattle on hoof was South Africa accounting for 98.6 percent share.

Chart 4: Small Stock Export Approved Abattoirs and Butchers Index, Percentage Change



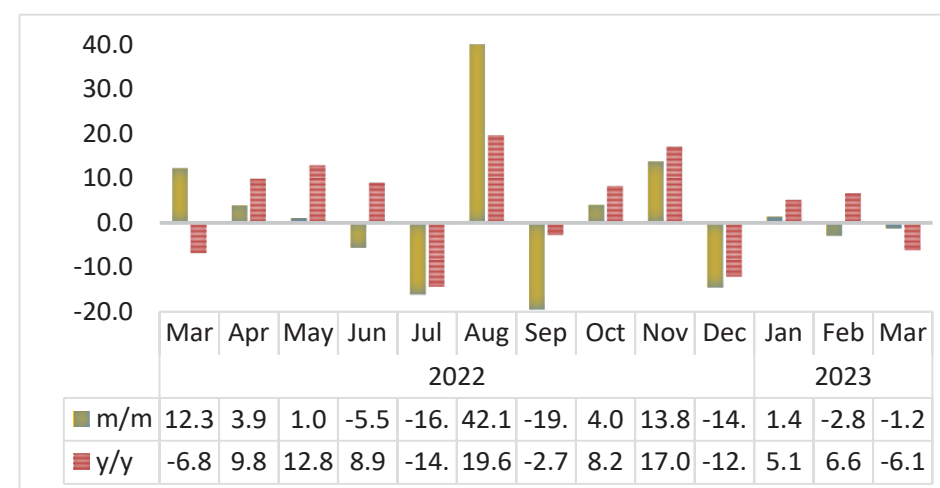
- During the month under review, the Small Stock Export Approved Abattoirs and Butchers Index increased by 50.8 percent compared to an increase of 109.9 percent registered in the previous month. Moreover, the index accelerated to a growth of 105.0 percent year-on-year.
- The total of 21 215 small stock were marketed through export approved abattoirs and butchers in March 2023, of which 99.9 percent (21 202 small stock) were sourced from South of the Veterinary Cordon fence (S-VCF) and only 13 small stock were sourced from North of the Veterinary Cordon Fence (N-VCF).

Chart 5: Live Small Stock Export, Percentage Change



- The index for the export of live small stock recorded a monthly increase of 94.2 percent in March 2023 compared to an increase of 87.2 percent recorded in the preceding month. Additionally, the index recorded an increase of 32.8 year-on-year.
- During the review period, 77 352 small stock were exported live. Sheep accounted for the largest of 89.6 percent, whilst goats accounted for only 10.4 percent.
- A total of 69 300 live sheep were exported during March 2023, of which 99.9 percent was destined to South Africa.
- In addition, a total of 8 052 live goats were marketed during the review period. The main export market for goats was South Africa accounting for 99.0 percent share.

Chart 6: Pigs Index, Percentage Change



- The index for pigs posted a decline of 1.2 percent on a monthly basis, which is a slight improvement when compared to a decline of 2.8 percent recorded in February 2023. Moreover, the index declined by 6.1 percent on an annual basis.

Table 1. Number of livestock marketed ('000)

Year	Month	Cattle export abattoirs & butchers	Cattle live exported South Africa & Angola	Small stock Export abattoirs and butchers	Live small stock South Africa and Angola	Pigs slaughtered	Total Livestock Marketed
2020	Jan	6	10	11	11	4	42
	Feb	6	21	11	18	3	61
	Mar	8	18	15	32	4	77
	Apr	8	10	28	34	4	83
	May	13	6	14	36	3	73
	Jun	10	10	13	38	4	74
	Jul	8	19	11	29	4	71
	Aug	6	16	9	22	4	55
	Sep	5	15	10	16	4	50
	Oct	7	13	11	17	4	52
	Nov	8	11	10	25	4	58
	Dec	6	10	11	29	4	60
2021	Jan	4	7	9	7	3	30
	Feb	5	8	11	21	4	49
	Mar	8	11	12	42	4	77
	Apr	8	10	14	41	4	77
	May	8	10	10	54	4	86
	Jun	9	12	11	52	4	88
	Jul	10	14	10	33	4	72
	Aug	9	15	10	25	4	63
	Sep	7	15	10	21	4	57
	Oct	8	13	5	27	4	56
	Nov	6	13	7	29	4	58
	Dec	5	10	5	39	4	62

Table 1: Number of livestock marketed ('000) cont....

Year	Month	Cattle export abattoirs & butchers	Cattle live exported South Africa & Angola	Small stock Export abattoirs and butchers	Live small stock South Africa and Angola	Pigs slaughtered	Total Livestock Marketed
2022	Jan	8	8	7	20	4	46
	Feb	8	10	7	32	3	61
	Mar	8	11	10	58	4	91
	Apr	12	10	29	66	4	121
	May	10	14	12	73	4	113
	Jun	12	14	15	75	4	120
	Jul	10	16	13	58	3	99
	Aug	7	10	12	34	5	68
	Sep	7	10	10	30	4	61
	Oct	7	16	10	32	4	69
	Nov	7	13	11	40	4	76
	Dec	6	8	16	43	4	77
2023	Jan	5	10	7	21	4	47
	Feb	5	8	14	40	4	71
	Mar	10	12	21	77	4	124

Table 2: Indices of Livestock marketed

Year	Month	Cattle export abattoirs & butchers	Cattle Live export on hoof	Small stock Export abattoirs and butchers	Live small stock South Africa and Angola	Pigs slaughtered	Composite Index
2020	Jan	60.6	46.6	24.9	23.6	118.7	51.3
	Feb	65.1	99.8	26.2	38.4	109.9	74.1
	Mar	82.2	82.7	33.8	67.3	126.1	78.7
	Apr	79.5	48.1	63.0	70.3	124.5	67.2
	May	133.1	28.7	31.0	75.8	105.3	80.3
	Jun	97.3	46.9	29.9	78.8	120.6	72.4
	Jul	78.4	89.6	25.0	60.5	128.9	78.4
	Aug	56.4	73.3	19.9	45.1	112.7	60.7
	Sep	54.8	68.7	22.6	34.1	119.2	57.7
	Oct	74.2	59.9	24.9	36.0	117.1	63.1
	Nov	78.5	53.8	22.4	52.1	115.2	63.8
	Dec	62.9	45.4	24.4	61.3	132.9	55.5
2021	Jan	43.2	32.0	20.4	14.7	105.5	36.8
	Feb	54.3	36.2	25.5	44.6	116.5	46.4
	Mar	78.6	52.1	27.3	87.5	132.6	67.2
	Apr	84.0	45.7	32.5	84.5	116.9	66.8
	May	80.7	47.9	23.6	112.9	114.9	67.9
	Jun	92.2	56.5	26.0	108.3	112.5	75.7
	Jul	105.2	65.7	23.2	69.4	120.1	81.4
	Aug	95.4	68.9	22.8	52.1	122.2	77.0
	Sep	75.3	70.2	22.0	43.5	121.1	67.9
	Oct	79.6	59.7	11.3	57.0	113.2	65.9
	Nov	59.6	61.4	15.4	60.0	119.1	58.7
	Dec	48.5	44.6	10.5	81.0	135.6	49.7

Table 2: Indices of Livestock marketed cont....

Year	Month	Cattle export abattoirs & butchers	Cattle Live export on hoof	Small stock Export abattoirs and butchers	Live small stock South Africa and Angola	Pigs slaughtered	Composite Index
2022	Jan	78.2	38.9	15.4	40.9	115.0	56.6
	Feb	81.3	47.0	16.8	67.2	110.1	63.2
	Mar	83.8	49.9	23.7	121.4	123.6	71.0
	Apr	124.4	47.3	66.2	136.6	128.4	92.3
	May	101.1	65.1	28.0	151.4	129.7	87.2
	Jun	117.9	67.0	35.5	156.2	122.5	95.9
	Jul	96.4	73.1	30.1	120.3	102.9	84.8
	Aug	69.0	48.6	27.1	71.8	146.2	60.8
	Sep	69.6	46.0	23.7	62.0	117.8	58.1
	Oct	69.4	73.4	23.9	67.4	122.5	68.9
	Nov	74.2	60.5	25.5	82.9	139.4	68.1
	Dec	62.1	37.6	36.1	90.3	119.2	55.2
2023	Jan	54.6	46.1	15.3	44.3	120.8	49.6
	Feb	53.7	39.1	32.2	83.0	117.4	51.2
	Mar	96.6	58.4	48.6	161.1	116.0	84.8

Data Sources	:	The data was obtained from the Meat Board of Namibia.
Base year	:	Livestock Sectoral report is harmonized with the quarterly and annual national accounts base year 2015.
Calculations of index	:	The index is calculated based on the 2015 base year volumes and 2015 weights. The index is the magnitude of the volume. Changes over time, with reference to the volume of the base year 2015. The index is calculated as a ratio of the volume of a specific component in a specific month to the total volume of that component in 2015.
Conversion	:	1 basis point = 0.01 percent