

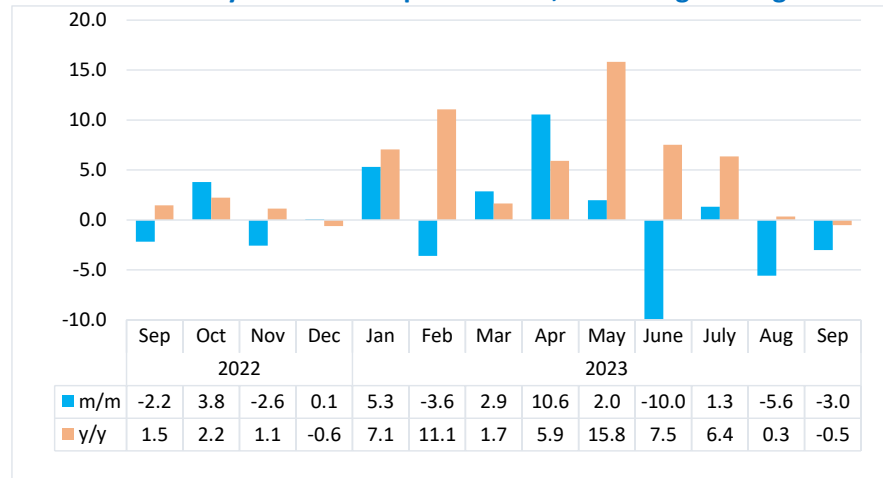


# ELECTRICITY

September 2023

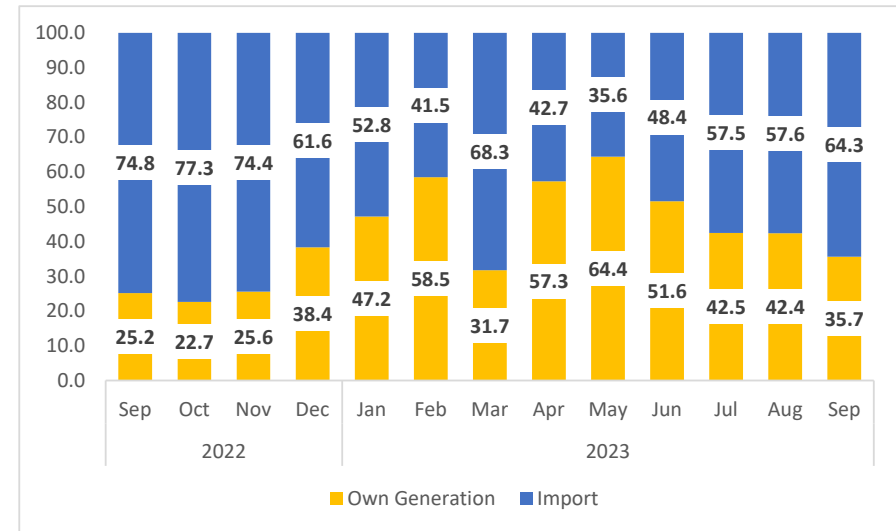


**Chart 1: Electricity Sources Composite Index, Percentage Change**



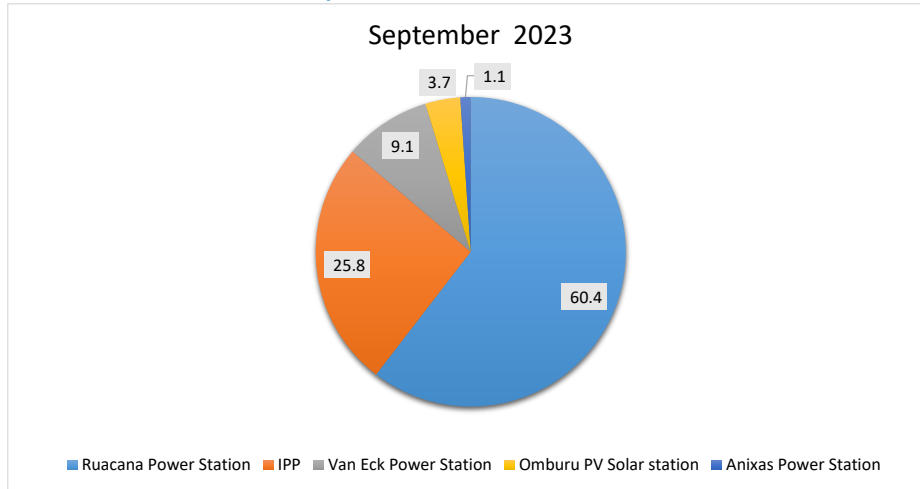
- The **Electricity Sources Composite Index** comprising of own generation (local production) and imported electricity decreased by 3.0 percent in September 2023 compared to a decline of 5.6 percent that was registered in the preceding month. Similarly, the index recorded a decline of 0.5 percent on a yearly basis (Chart 1).

**Chart 2: Share of Sources of Electricity, in Percent**



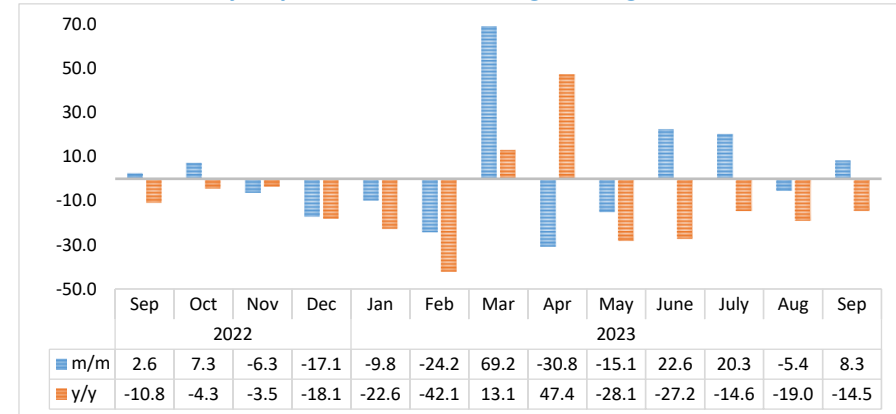
- In September 2023, the aggregate demand for electricity declined to 344 853 MWh, down from 355 541 MWh recorded in the previous month, and down from 346 626 MWh noted in the corresponding month of 2022. Own generation accounted for 35.7 percent (123 030 MWh), while imports accounted for 64.3 percent (221 823 MWh) of total demand.

**Chart 3: Share of Electricity for Own Generation, in Percent**



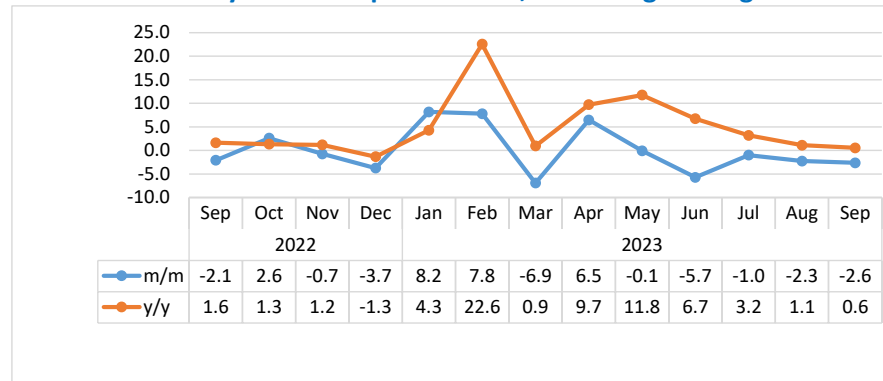
- Local electricity for September 2023 amounted to 123 030 MWh. Ruacana power station accounted for the highest share of 60.4 percent (74 361 MWh), while Independent Power Producers (IPP) collectively generated 25.8 percent (31 710 MWh) of local production (Chart 3).

**Chart 4: Electricity Import Index, Percentage Change**



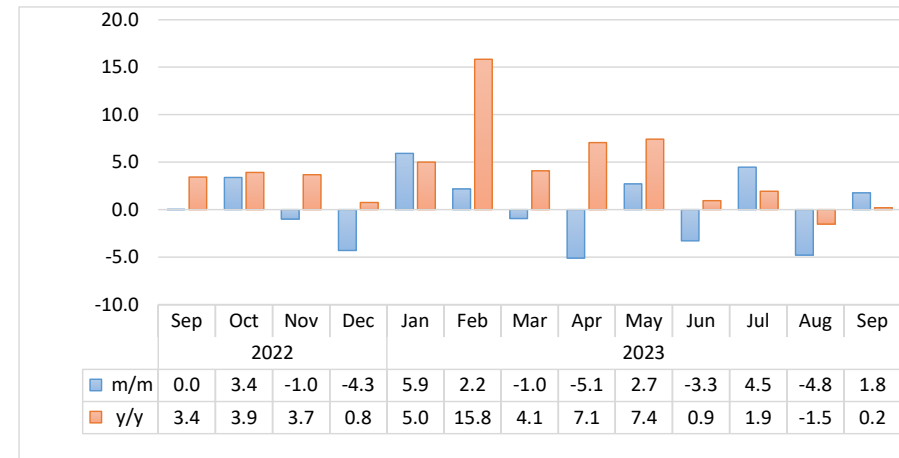
- The **Electricity Import Index** recorded an increase of 8.3 percent in September 2023 compared to a decline of 5.4 percent that was registered in August 2023. On the other hand, the index witnessed a decline of 14.5 percent on annual basis (Chart 4).
- A total of 221 823 MWh of electricity was imported during September 2023. Zesco Zambia was the main source market accounting for 48.7 percent, followed by South Africa (20.9%), and Zimbabwe (17.0%) in second and third place, respectively.

**Chart 5: Electricity Sales Composite Index, Percentage Change**



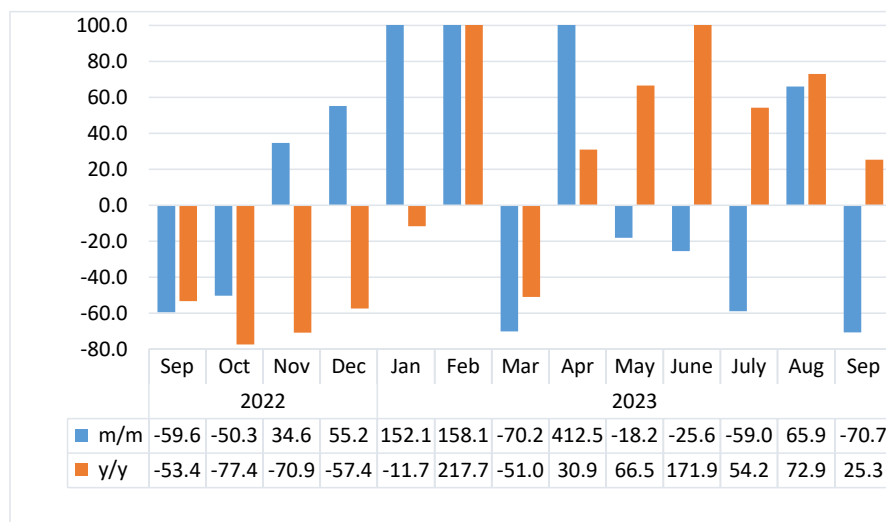
- The **Electricity Sales Composite Index** for September 2023 recorded a decline of 2.6 percent compared to a 2.3 percent reduction registered in August 2023. However, on annual basis, the index registered a marginal increase of 0.6 percent (Chart 5).
- Total electricity sales during the month of September 2023 amounted to 309 372 MWh a decrease from 317 762 MWh noted in the previous month, and an increase from 307 664 MWh that was registered during the corresponding month of 2022.

**Chart 6: Electricity Domestic Sales Index, Percentage Change**



- The **Electricity Domestic Sales Index** for September 2023 increased by 1.8 percent compared to a decline of 4.8 percent registered during the previous month. Additionally, the index registered an increase of 0.2 percent year-on-year (Chart 6).
- The total electricity sold locally increased to 303 727 MWh during the month under review, from 298 484 MWh recorded in August 2023, and 303 158 MWh of electricity recorded in the corresponding month of 2022. Electricity was mainly sold to Redistributors - LPU (65.0%) and Mines (25.8%).

**Chart 7: Electricity Export Index, Percentage Change<sup>1</sup>**



- The **Electricity Export Sales Index** recorded a monthly decline of 70.7 percent in September 2023 compared to a growth of 65.9 percent registered in the preceding month. However, the index registered an increase of 25.3 percent year-on-year (Chart 7).
- During the period under review, Namibia exported 5 645 MWh of electricity of which 62.4 percent was supplied to STEM Sales-SAPP, followed by Botswana (19.8%) South Africa (9.3%) and Angola (8.5%).

**Table 1: Electricity Sources in MWH**

Year	Month	Own generated	Import
<b>2020</b>	Jan	249,327	171,655
	Feb	260,165	171,759
	Mar	268,742	252,506
	Apr	270,785	136,187
	May	234,883	176,429
	Jun	145,495	226,701
	Jul	156,692	227,982
	Aug	176,845	209,579
	Sep	155,062	213,956
	Oct	139,242	248,759
	Nov	110,168	255,038
	Dec	140,822	243,109
<b>2021</b>	Jan	98,191	255,534
	Feb	66,648	238,395
	Mar	65,547	252,906
	Apr	95,326	250,225
	May	95,027	251,119
	Jun	64,155	265,577
	Jul	48,192	297,297
	Aug	43,152	301,495
	Sep	50,664	290,922
	Oct	61,058	290,893
	Nov	76,294	270,322
	Dec	89,054	263,899

**Table 1: Electricity Sources in MWH Continue...**

Year	Month	Own generated	Import
<b>2022</b>	Jan	93,044	252,026
	Feb	65,362	255,286
	Mar	139,261	221,067
	Apr	265,053	117,300
	May	152,261	204,296
	Jun	98,405	247,188
	Jul	100,515	253,554
	Aug	101,360	252,948
	Sep	87,212	259,414
	Oct	81,558	278,245
	Nov	89,789	260,750
	Dec	134,559	216,217
<b>2023</b>	Jan	174,396	195,004
	Feb	208,340	147,774
	Mar	116,256	250,059
	Apr	232,039	172,956
	May	266,144	146,833
	Jun	191,672	179,945
	Jul	160,051	216,521
	Aug	150,729	204,813
	Sep	123,030	221,823

Table 2: Electricity sources index (2015=100)

Year	Month	Own generated Index	Import Index	Electricity Sources Composite Index
2020	Jan	225.7	72.1	120.7
	Feb	235.5	72.1	123.9
	Mar	243.2	106.0	149.5
	Apr	245.1	57.2	116.7
	May	212.6	74.1	117.9
	Jun	131.7	95.2	106.7
	Jul	141.8	95.7	110.3
	Aug	160.1	88.0	110.8
	Sep	140.3	89.8	105.8
	Oct	126.0	104.4	111.3
	Nov	99.7	107.0	104.7
	Dec	127.5	102.0	110.1
2021	Jan	88.9	107.3	101.4
	Feb	60.3	100.1	87.5
	Mar	59.3	106.2	91.3
	Apr	86.3	105.0	99.1
	May	86.0	105.4	99.3
	Jun	58.1	111.5	94.6
	Jul	43.6	124.8	99.1
	Aug	39.1	126.5	98.8
	Sep	45.9	122.1	98.0
	Oct	55.3	122.1	100.9
	Nov	69.1	113.5	99.4
	Dec	80.6	110.8	101.2

Table 2: Electricity sources index (2015=100) Continue...

Year	Month	Own generated Index	Import Index	Electricity Sources Composite Index
2022	Jan	84.2	105.8	99.0
	Feb	59.2	107.2	91.9
	Mar	126.0	92.8	103.3
	Apr	239.9	49.2	109.6
	May	137.8	85.8	102.2
	Jun	89.1	103.8	99.1
	Jul	91.0	106.4	101.5
	Aug	91.7	106.2	101.6
	Sep	78.9	108.9	99.4
	Oct	73.8	116.8	103.2
	Nov	81.3	109.4	100.5
	Dec	121.8	90.8	100.6
2023	Jan	157.8	81.9	105.9
	Feb	188.6	62.0	102.1
	Mar	105.2	105.0	105.0
	Apr	210.0	72.6	116.1
	May	240.9	61.6	118.4
	Jun	173.5	75.5	106.6
	Jul	144.9	90.9	108.0
	Aug	136.4	86.0	102.0
	Sep	111.4	93.1	98.9

**Table 3: Electricity Sales in MWH**

Year	Month	Domestic Sales	Export Sales
<b>2020</b>	Jan	293,012	9,741
	Feb	263,685	9,854
	Mar	345,424	9,445
	Apr	261,738	9,029
	May	268,139	8,600
	Jun	279,446	9,359
	Jul	289,489	9,704
	Aug	295,368	9,809
	Sep	287,338	9,895
	Oct	299,602	10,497
	Nov	282,311	10,674
	Dec	302,423	10,544
<b>2021</b>	Jan	298,848	9,608
	Feb	271,421	8,931
	Mar	290,056	9,164
	Apr	284,527	9,089
	May	297,400	8,915
	Jun	284,881	9,015
	Jul	297,535	8,978
	Aug	296,030	8,979
	Sep	293,074	9,668
	Oct	301,575	9,917
	Nov	299,292	10,346
	Dec	294,724	10,964

**Table 3: Electricity Sales in MWH Continue...**

Year	Month	Domestic Sales	Export Sales
<b>2022</b>	Jan	299,509	13,339
	Feb	277,413	9,566
	Mar	305,817	18,501
	Apr	282,149	35,519
	May	288,780	22,849
	Jun	297,285	10,415
	Jul	307,537	7,535
	Aug	303,106	11,149
	Sep	303,158	4,507
	Oct	313,408	2,238
	Nov	310,318	3,011
	Dec	296,953	4,671
<b>2023</b>	Jan	314,507	11,777
	Feb	321,345	30,395
	Mar	318,289	9,072
	Apr	302,068	46,496
	May	310,238	38,042
	Jun	300,076	28,321
	Jul	313,495	11,618
	Aug	298,484	19,279
	Sep	303,727	5,645



Table 4: Electricity sales index

Year	Month	Domestic sales Index	Export Index	Electricity Sales Composite Index
2020	Jan	108.9	125.2	109.3
	Feb	98.0	126.7	98.8
	Mar	128.4	121.4	128.2
	Apr	97.3	116.1	97.8
	May	99.6	110.5	99.9
	Jun	103.8	120.3	104.3
	Jul	107.6	124.7	108.1
	Aug	109.8	126.1	110.2
	Sep	106.8	127.2	107.4
	Oct	126.9	134.9	127.1
	Nov	115.1	137.2	115.7
	Dec	112.6	135.5	113.2
2021	Jan	111.2	123.5	111.6
	Feb	100.9	114.8	101.3
	Mar	107.8	117.8	108.1
	Apr	105.7	116.8	106.0
	May	110.5	114.6	110.6
	Jun	105.9	115.9	106.1
	Jul	110.6	115.4	110.7
	Aug	110.0	115.4	110.2
	Sep	108.9	124.3	109.3
	Oct	112.1	127.5	112.5
	Nov	111.2	133.0	111.8
	Dec	109.5	140.9	110.4

Table 4: Electricity sales index Continue...

Year	Month	Domestic sales Index	Export Index	Electricity Sales Composite Index
2022	Jan	111.3	171.5	113.0
	Feb	103.1	123.0	103.6
	Mar	113.6	237.8	117.1
	Apr	104.8	456.5	114.7
	May	107.3	293.7	112.5
	Jun	110.5	133.9	111.1
	Jul	114.3	96.8	113.8
	Aug	112.6	143.3	113.5
	Sep	112.7	57.9	111.1
	Oct	116.5	28.8	114.0
	Nov	115.3	38.7	113.2
	Dec	110.4	60.0	108.9
2023	Jan	116.9	151.4	117.8
	Feb	119.4	390.7	127.0
	Mar	118.3	116.6	118.2
	Apr	112.3	597.6	125.9
	May	115.3	489.0	125.8
	Jun	111.5	364.0	118.6
	Jul	116.5	149.3	117.4
	Aug	110.9	247.8	114.8
	Sep	112.9	72.6	111.7

**Methodology** : Graphical and tabular analysis

**Data Sources** : The data source for the volume of electricity is sourced from Nam-power. These are data on domestic and export sale, Own Generation and import sources. The Production is in kilowatts per hour (kWh) for all the variables.

**Index calculation:** The index of sales and sources weighted uses the volume data of 2015.

**Conversion** : 1 basis point = 0.01 percent