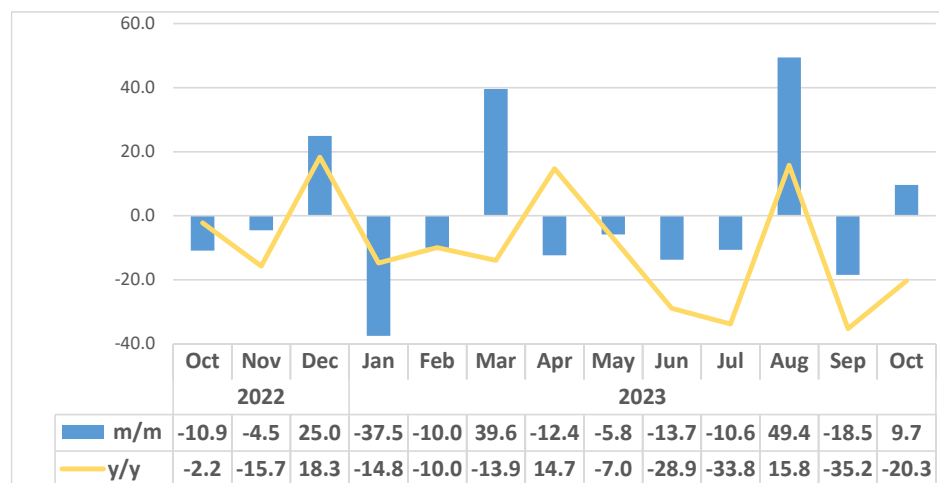


BEVERAGES

OCTOBER 2023

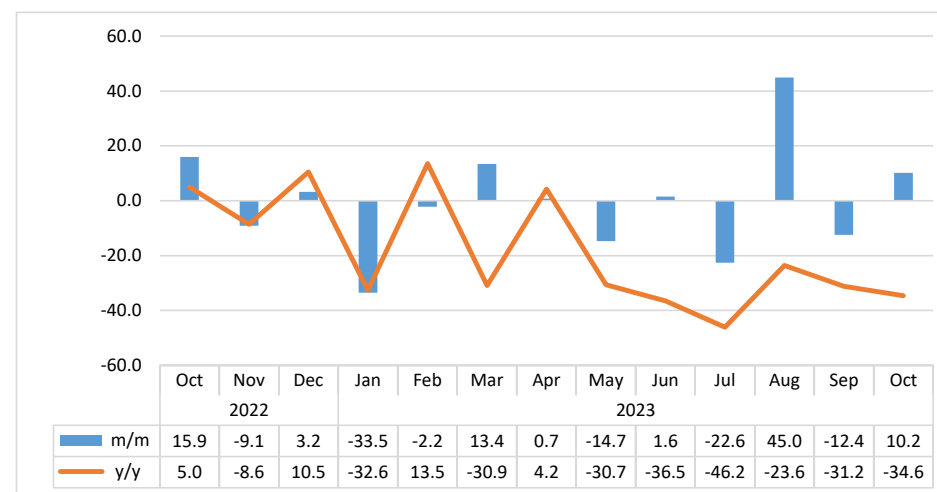


Chart 1: Beverage Production Composite Index, Percentage Change



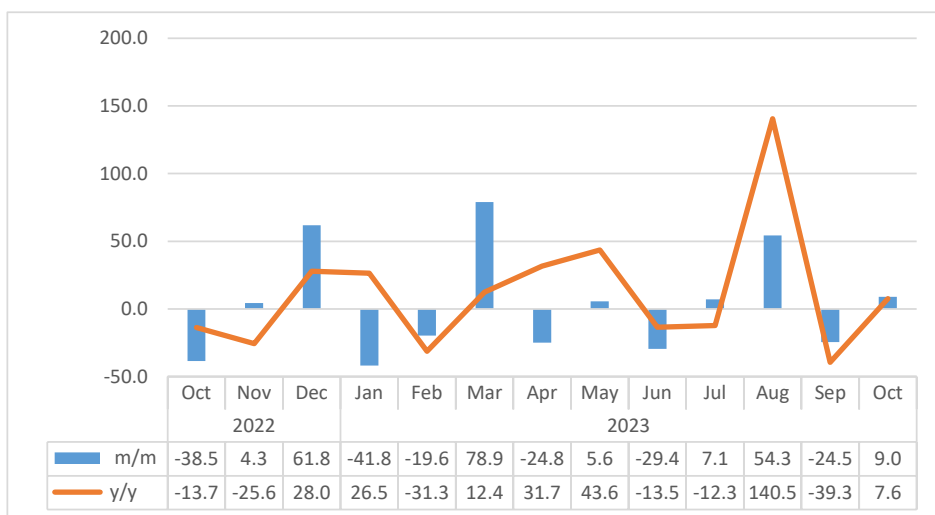
- The **Composite Beverage Production Index** consisting of alcoholic and non-alcoholic beverages for October 2023 recorded a monthly increase of 9.7 percent, compared to a decline of 18.5 percent recorded in September 2023. However, the index declined by 20.3 percent on an annual basis (Chart 1).
- The increase in the monthly index was recorded in both production indices of alcoholic beverages and non-alcoholic.
- During the period under review, beverage production stood at 274 506 hectolitres, which is an increase from 250 320 hectolitres recorded in September 2023 and a decline when compared to 344 459 hectolitres recorded in October 2022.

Chart 2: Alcoholic Beverage Production Index, Percentage Change



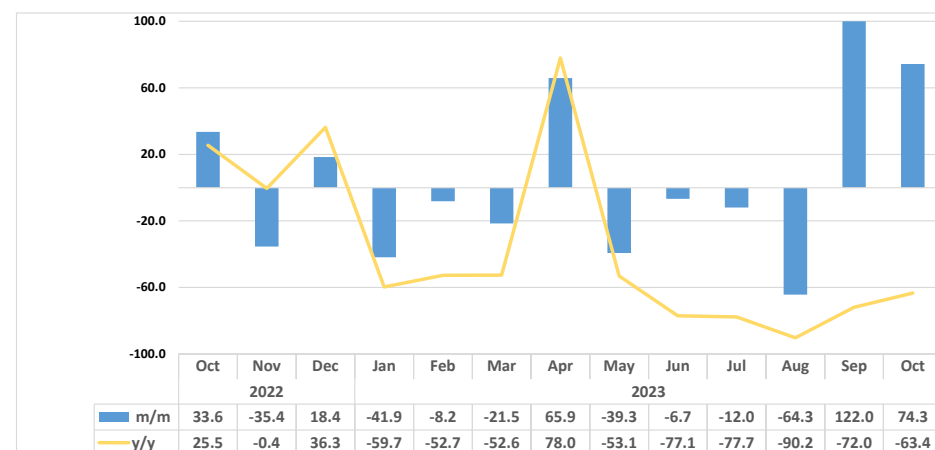
- The **Alcoholic Beverage Production Index** recorded a monthly increase of 10.2 percent in October 2023, compared to a decline of 12.4 percent recorded a month earlier. However, on annual basis the index declined by 34.6 percent (Chart 2).
- The production of alcoholic beverages registered in October 2023 was 148 639 hectolitres up from 134 891 hectolitres recorded in September 2023, and a decline when compared to 227 441 hectolitres recorded in the corresponding period of 2022.

Chart 3: Non-Alcoholic Beverage Production Index, Percentage Change



- In October 2023, the **Non-Alcoholic Beverage Production Index** recorded a monthly growth of 9.0 percent compared to a decline of 24.5 percent recorded in the preceding month. Similarly, the index registered an increase of 7.6 percent year-on-year (Chart 3).
- A total of 125 867 hectolitres of non-alcoholic beverages was produced in October 2023, an increase from 115 429 hectolitres and 117 018 hectolitres that was recorded in September 2023 and October 2022, respectively.

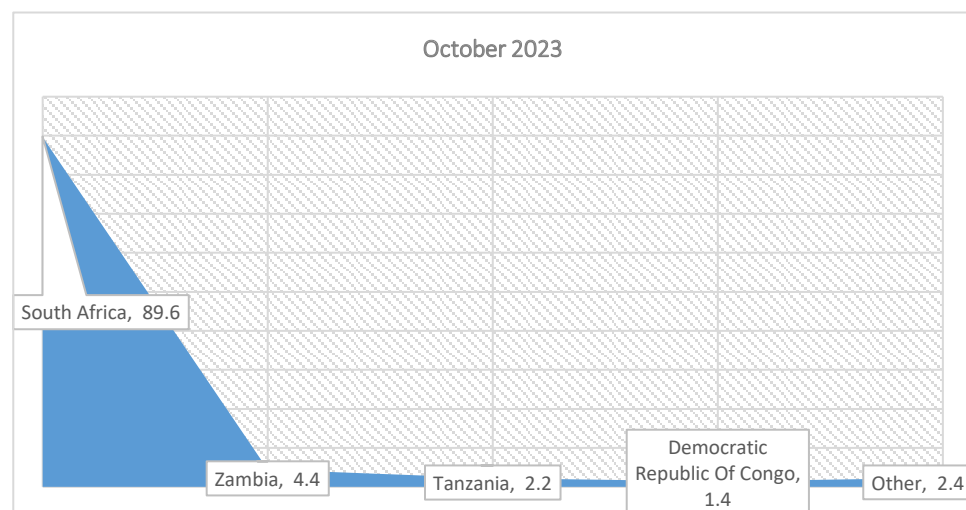
Chart 4: Beverage Export Composite Index, Percentage Change¹



- The **Beverage Export Composite Index** for October 2023 recorded a growth of 74.3 percent on a monthly basis, a slowdown when compared to a growth of 122.0 percent recorded in the preceding month. However, the index recorded a decline of 63.4 percent annually (Chart 4).
- During the month under review, 26 383 hectolitres of beverages were exported compared to 15 136 hectolitres and 72 124 hectolitres registered in September 2023 and October 2022, respectively.
- For the same period, Namibia exported 26 113 hectolitres of alcoholic beverages, of which beer accounted for 92.2 percent share (24 089 hectolitres).

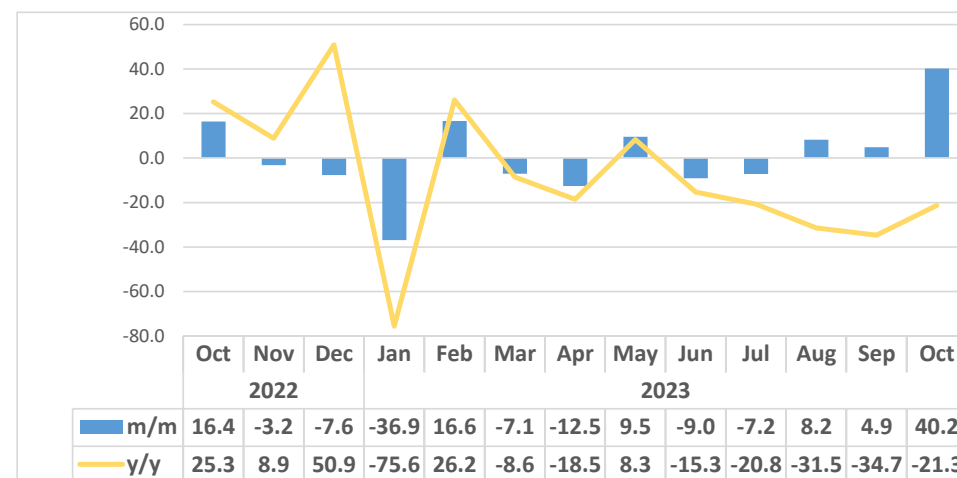
¹ Chart 4 is limited for better readability.

Chart 5: Export of Beverages by Partner Country, Percentage Share



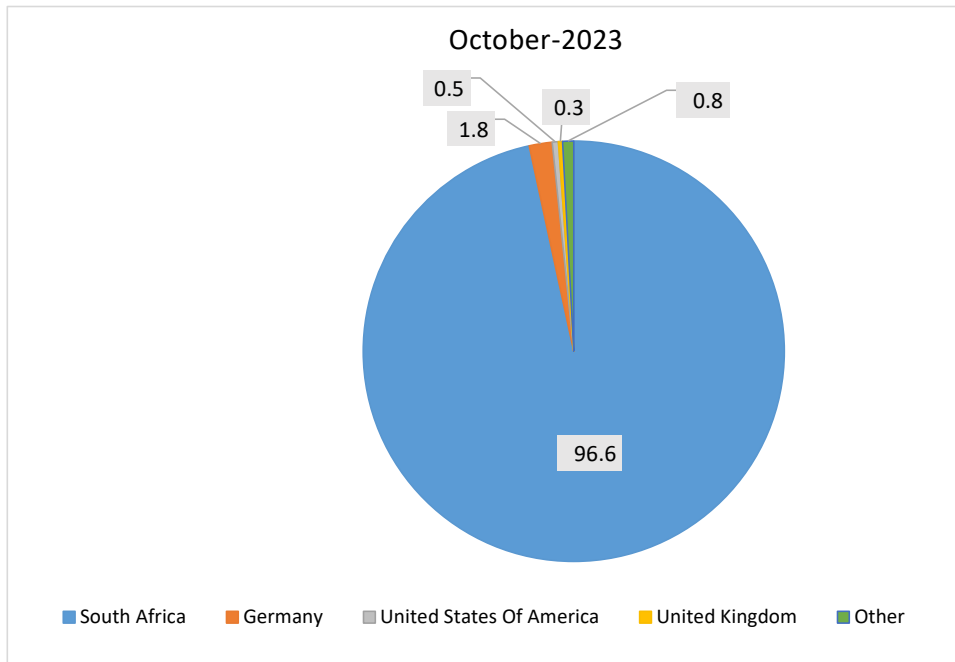
- South Africa (89.6%) was the top export destination for beverages, followed by Zambia (4.4%) in second place, Tanzania (2.2%) in third place and Democratic Republic of Congo in fourth position with a share of 1.4 percent (Chart 5).

Chart 6: Beverage Import Composite Index, Percentage Change



- The **Beverage Import Composite Index** for October 2023 recorded a growth of 40.2 percent on a monthly basis compared to a growth of 4.9 percent recorded in the preceding month. In contrast, the index declined by 21.3 percent annually (Chart 6).
- For the period under review, Namibia imported 117 766 hectolitres of beverages as opposed to 83 982 hectolitres registered in September 2023 and 149 710 hectolitres recorded in October 2022.

Chart 7: Import of Beverages by Partner Country, Percentage Share



- During the month under review, South Africa remained the top primary source of beverages with a share of 96.6 percent, followed by Germany (1.8%), United States of America (0.5%) and United Kingdom with a share of 0.3 percent (Chart 7).

Table 1: Beverages Production Index

Year	Month	Alcoholic Beverages production index	Non-Alcoholic Beverages production index	Composite production Index
2020	Jan	139.5	72.6	116.0
	Feb	97.7	102.6	99.4
	Mar	109.6	127.1	115.8
	Apr	8.6	97.4	39.9
	May	16.9	128.7	56.2
	Jun	63.3	141.3	90.8
	Jul	87.3	84.0	86.2
	Aug	71.4	94.3	79.5
	Sep	98.9	87.8	95.0
	Oct	109.9	231.0	152.6
	Nov	126.7	172.5	142.8
	Dec	146.3	206.7	167.6
2021	Jan	100.7	114.4	105.5
	Feb	86.2	68.6	80.0
	Mar	109.2	153.2	124.7
	Apr	104.5	88.4	98.8
	May	91.4	43.6	74.6
	Jun	98.5	71.9	89.1
	Jul	71.4	44.9	62.0
	Aug	104.8	122.4	111.0
	Sep	119.9	153.8	131.8
	Oct	128.2	147.8	135.1
	Nov	133.9	178.6	149.6
	Dec	114.3	168.1	133.3

Table 1: Beverages Production Index continued...

Year	Month	Alcoholic Beverages production index	Non-Alcoholic Beverages production index	Composite production Index
2022	Jan	124.6	98.9	115.6
	Feb	72.4	146.4	98.5
	Mar	134.9	160.0	143.8
	Apr	90.1	102.7	94.5
	May	115.4	99.4	109.8
	Jun	128.1	116.5	124.0
	Jul	116.8	123.1	119.0
	Aug	119.4	69.3	101.7
	Sep	116.2	207.3	148.3
	Oct	134.7	127.5	132.1
	Nov	122.4	133.0	126.1
	Dec	126.3	215.1	157.6
2023	Jan	84.0	125.1	98.5
	Feb	82.2	100.6	88.6
	Mar	93.2	179.9	123.8
	Apr	93.9	135.3	108.5
	May	80.0	142.8	102.2
	Jun	81.3	100.8	88.2
	Jul	62.9	108.0	78.8
	Aug	91.2	166.6	117.8
	Sep	79.9	125.7	96.0
	Oct	88.0	137.1	105.3

Table 2: Index for Export and import of Beverages

Year	Month	Alcoholic Beverage Export	Non-alcoholic Beverage Export	Composite export index	Alcoholic Beverage Import	Non-alcoholic Beverage Import	Composite import index
2020	Jan	102.5	124.0	103.3	43.4	294.3	78.5
	Feb	56.9	101.5	58.5	40.6	440.0	96.5
	Mar	36.3	77.7	37.8	136.0	309.6	160.3
	Apr	0.0	24.2	0.9	2.1	284.9	41.7
	May	1.5	28.3	2.5	2.3	188.4	28.4
	Jun	19.2	44.4	20.1	45.8	236.8	72.5
	Jul	10.9	50.0	12.3	46.7	143.8	60.3
	Aug	8.9	91.0	12.0	75.1	267.0	101.9
	Sep	21.2	85.1	23.6	51.0	303.3	86.3
	Oct	26.9	94.4	29.4	68.3	506.3	129.6
	Nov	47.4	80.9	48.7	83.1	443.7	133.5
	Dec	55.7	50.5	55.5	75.7	479.3	132.2
2021	Jan	26.7	78.9	28.7	63.5	278.0	93.5
	Feb	63.3	114.6	65.2	35.7	319.2	75.4
	Mar	60.1	31.9	59.0	45.8	313.4	83.2
	Apr	64.7	22.2	63.1	42.3	477.3	103.2
	May	29.8	5.1	28.8	47.7	906.5	167.8
	Jun	48.9	31.0	48.2	56.7	619.6	135.4
	Jul	11.8	12.8	11.8	49.1	174.7	66.7
	Aug	55.4	23.0	54.2	59.0	239.8	84.3
	Sep	75.6	21.0	73.5	63.5	352.4	103.9
	Oct	60.7	39.3	59.9	71.4	464.5	126.4
	Nov	49.6	28.1	48.8	69.6	577.4	140.6
	Dec	42.8	27.9	42.2	60.4	299.0	93.8

Table 2: Index for Export and import of Beverages continued...

Year	Month	Alcoholic Beverage Export	Non-alcoholic Beverage Export	Composite export index	Alcoholic Beverage Import	Non-alcoholic Beverage Import	Composite import index
2022	Jan	85.5	18.0	83.0	360.6	399.3	366.0
	Feb	67.1	13.2	65.0	47.4	298.9	82.6
	Mar	52.6	6.7	50.9	46.9	468.3	105.9
	Apr	23.3	1.3	22.5	52.5	419.7	103.9
	May	53.7	2.3	51.8	53.3	284.5	85.6
	Jun	102.5	4.7	98.9	59.0	348.8	99.5
	Jul	92.5	6.8	89.3	69.9	276.5	98.8
	Aug	75.4	7.9	72.8	63.2	495.4	123.6
	Sep	58.3	4.6	56.3	87.5	434.7	136.0
	Oct	74.4	96.1	75.2	85.3	607.5	158.3
	Nov	49.0	38.9	48.6	77.5	618.5	153.2
	Dec	59.3	13.1	57.6	68.5	590.8	141.6
2023	Jan	34.3	11.6	33.5	57.2	287.0	89.3
	Feb	31.4	14.3	30.7	70.8	309.3	104.1
	Mar	22.2	73.0	24.1	51.8	373.1	96.8
	Apr	41.2	9.3	40.0	51.6	287.5	84.6
	May	24.8	12.1	24.3	69.4	235.8	92.7
	Jun	23.1	12.4	22.7	58.4	243.5	84.3
	Jul	20.1	14.6	19.9	48.6	260.8	78.3
	Aug	7.0	10.9	7.1	49.5	301.1	84.7
	Sep	16.3	3.0	15.8	39.2	393.6	88.8
	Oct	28.3	7.5	27.5	76.4	420.3	124.5

Methodology:	Graphical and tabular analysis
Data Sources:	The data sources for volume in Hectolitres of beverage are sourced from Namibia Breweries, Coca-Cola Namibia Bottling Company, ABInBev Namibia (SAB Miller Namibia at Okahandja) and Trade data from NamRa. This is data on the production of alcoholic beverages (beer production) and non-alcoholic beverages (soft drinks). Alcoholic beverage production is the total of alcoholic beverages produced by Namibia Breweries and ABInBev Namibia. Whereas non-alcoholic beverage production data was a sum of soft drinks produced by Namibia Breweries and Namibia Beverages. The unit of measure is Hectolitre (hl).
Base year:	The beverages sectoral report is harmonised with the quarterly and annual National Accounts base year 2015.
Index calculations:	The index of beverage production was weighted using the volume data of 2015. The index is then calculated as a ratio of the volume of a specific component in a specific month to the total volume of that component in 2015.
Conversion:	1 basis point = 0.01 percent
Revision:	Data was revised based on the new dataset received from the data sources.