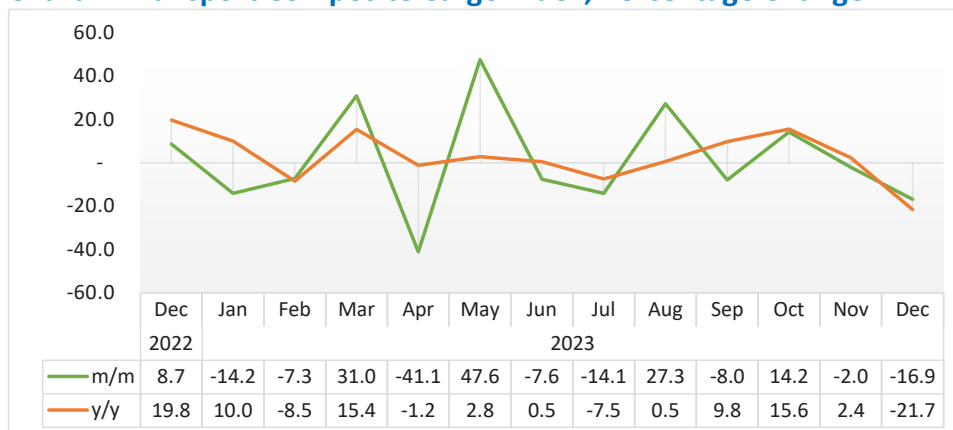


TRANSPORT

DECEMBER 2023

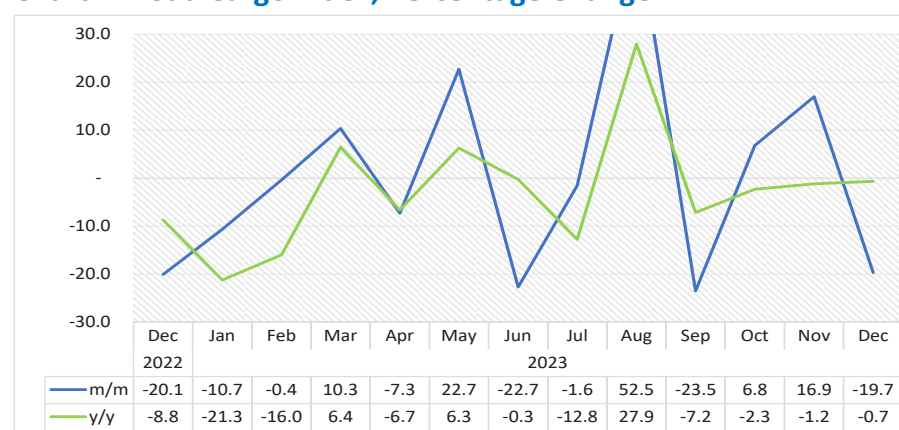


Chart 1: Transport Composite Cargo Index, Percentage Change



- The **Transport Composite Cargo Index** (Chart 1) consists of Road Cargo, Air Cargo, Sea Cargo, and Rail Cargo. In December 2023, the index contracted on monthly basis by 16.9 percent compared to a reduction of 2.0 percent noted a month earlier. Moreover, the index declined by 21.7 percent year-on-year.
- The monthly decrease is owed to a drop in volumes of cargo for consignments that were transported via road, rail, sea and air during the month of December 2023.
- 990 419 tonnes of cargo was transported in December 2023 compared to 1 191 147 tonnes and 1 264 415 tonnes that were transported in the preceding month and in the corresponding month of 2022, respectively.

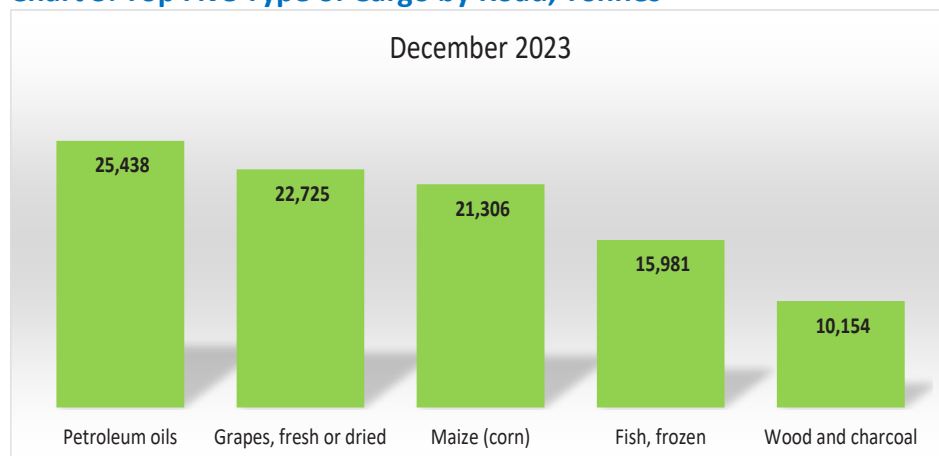
Chart 2: Road Cargo Index, Percentage Change¹



- The Road Cargo Index for December 2023 posted a monthly decrease of 19.7 percent, as opposed to a growth of 16.9 percent witnessed in the previous month (Chart 2). Additionally, the index declined by a margin of 0.7 percent year-on-year.
- A total of 318 991 tonnes of goods were transported via road during the month of December 2023, in contrast to 397 167 tonnes and 321 184 tonnes that were transported in November 2023 and in the corresponding month of 2022, respectively.

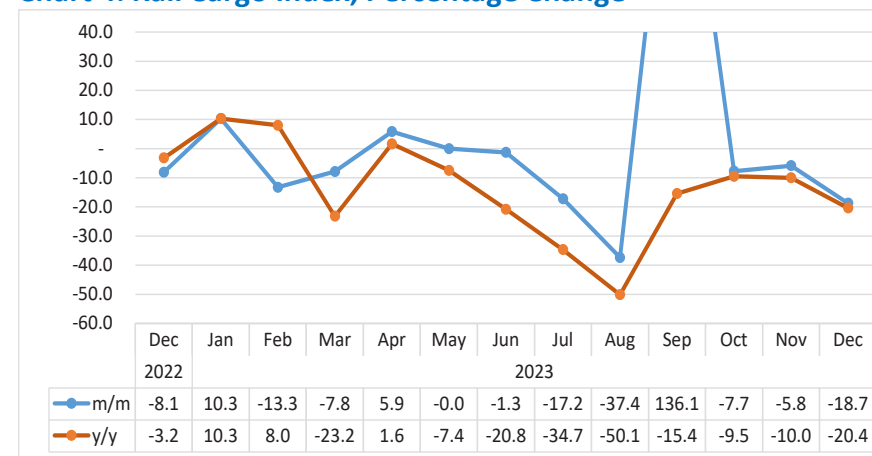
¹ This chart is limited to 30 percent for better readability.

Chart 3: Top Five Type of Cargo by Road, Tonnes



- During December 2023, Petroleum oils recorded the highest volumes of 25 438 tonnes transported by road, followed by 22 725 tonnes of ‘Grapes fresh or dried’ and Maize corn (21 306 tonnes) in second and third place, respectively (Chart 3).

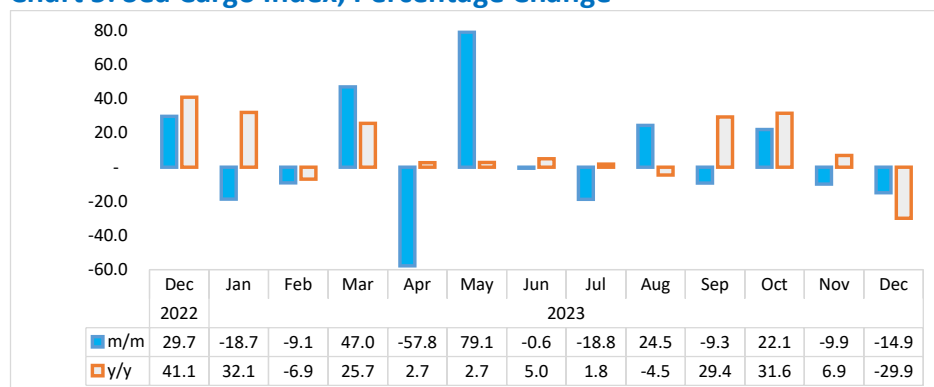
Chart 4: Rail Cargo Index, Percentage Change²



- For December 2023, the Rail Cargo Index contracted on a monthly basis by 18.7 percent, relative to a decrease of 5.8 percent registered in the preceding month. Moreover, the index declined by 20.4 percent year-on-year (Chart 4).
- A total of 85 687 tonnes of cargo was transported via rail during the review period, as opposed to 105 420 tonnes recorded in November 2023 and 107 634 tonnes registered in the corresponding month of 2022.

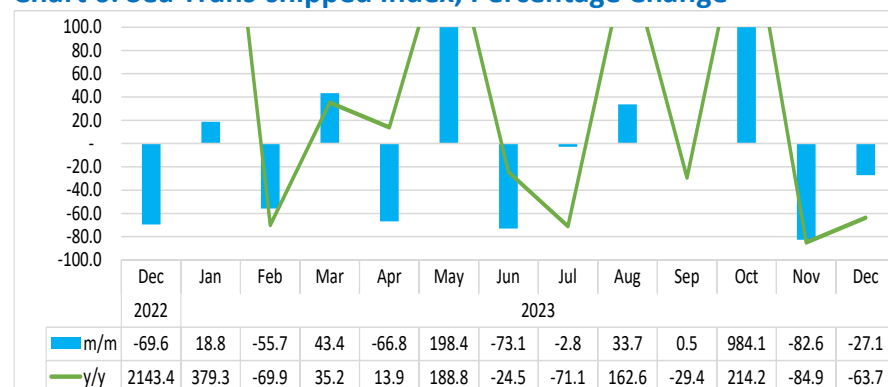
² This chart is limited to 40 percent for better readability.

Chart 5: Sea Cargo Index, Percentage Change



- The **Sea Cargo Index** which consists of Sea Landed, Sea trans-shipped and Sea-Shipped recorded a monthly decrease of 14.9 percent in December 2023, compared to a decline of 9.9 percent posted in the previous month. Moreover, the index declined by 29.9 percent year-on-year (Chart 5).
- A total of 585 395 tonnes of cargo was transported by sea in December 2023 compared to 688 198 tonnes and 835 255 tonnes registered in November 2023 and in the corresponding month of 2022, respectively.

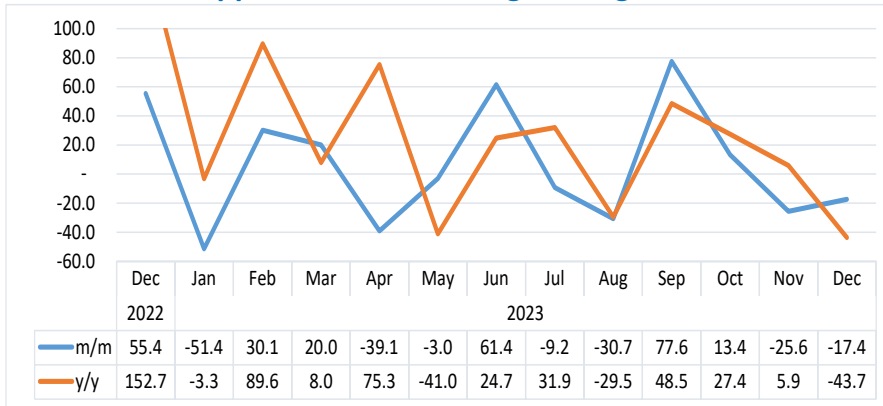
Chart 6: Sea Trans-shipped Index, Percentage Change³



- The Sea Trans-Shipped Index for December 2023 declined on a monthly basis by 27.1 percent, compared to a decrease of 82.6 percent that was witnessed in the preceding month. Moreover, the index decreased by 63.7 percent over the year (Chart 6).
- The total volume of goods trans-shipped by sea during the month of December 2023 amounted to 4 432 tonnes compared to 6 078 tonnes and 12 227 tonnes that were recorded in the preceding month and in the corresponding month of 2022, respectively.

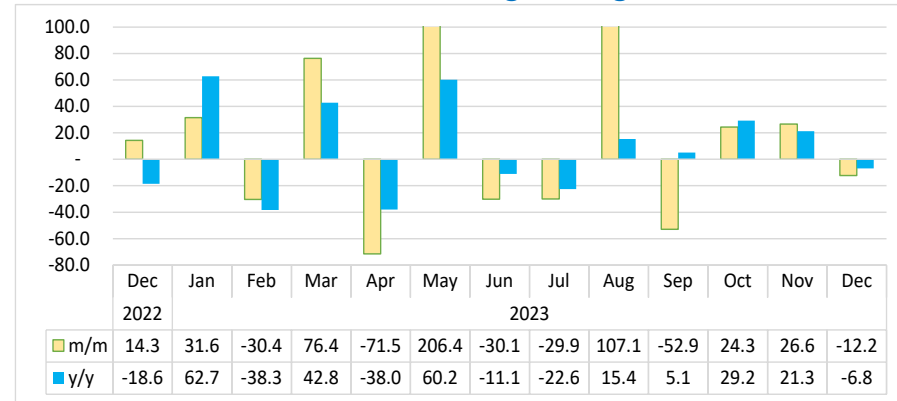
³ This chart is limited to 100 percent for better readability.

Chart 7: Sea Shipped Index, Percentage Change⁴



- The Sea Shipped Index for December 2023 on a monthly basis declined by 17.4 percent, compared to a reduction of 25.6 percent registered a month earlier. Moreover, the index decreased by 43.7 percent year-on-year (Chart 7).
- During the review period, a total of 283 536 tonnes of goods were shipped via sea, in relation to 343 333 tonnes and 503 800 tonnes shipped in November 2023 and in the corresponding month of 2022, respectively.

Chart 8: Sea Landed Index, Percentage Change⁵

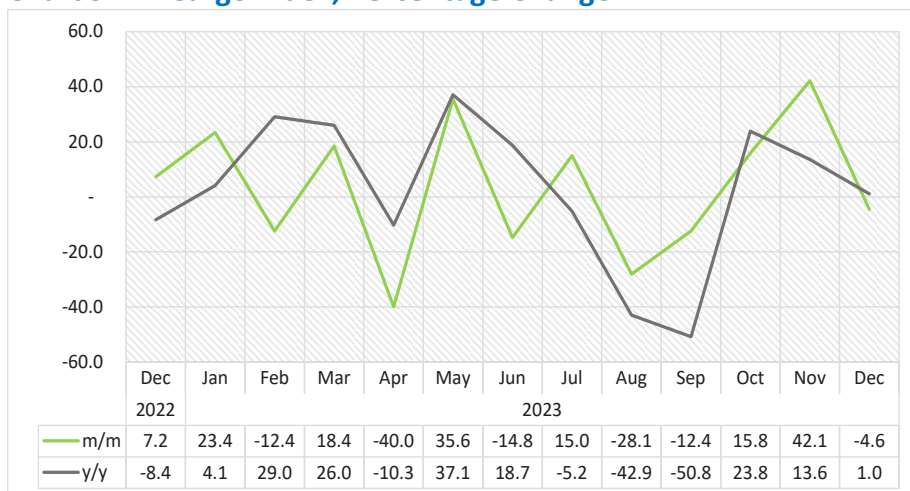


- The Sea Landed Index on a monthly basis declined by 12.2 percent during December 2023 in contrast to an increase of 26.6 percent registered in the preceding month. Additionally, the index decreased by 6.8 percent year-on-year (Chart 8).
- A total of 297 427 tonnes of goods were landed by sea during the month of December 2023, compared to 338 787 tonnes and 319 228 tonnes that were landed in November 2023 and in the corresponding month of 2022, respectively.

⁴ This chart is limited to 100 percent for better readability.

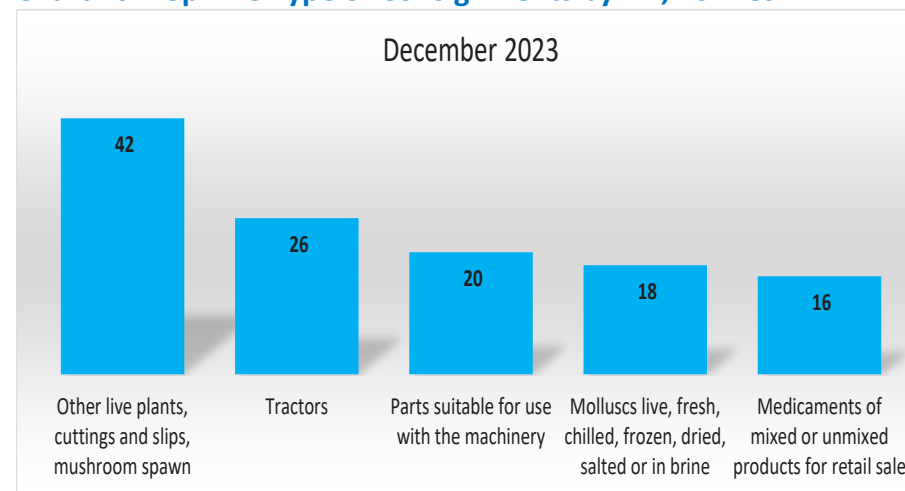
⁵ This chart is limited to 100 percent for better readability.

Chart 9: Air Cargo Index, Percentage Change



- In December 2023, the **Air Cargo Index** posted a monthly decline of 4.6 percent, as opposed to a growth of 42.1 percent witnessed in the preceding month (Chart 9). Conversely, the index increased by 1.0 percent year-on-year.
- A total of 346 tonnes of goods were transported via air during the month of December 2023 compared to 362 tonnes and 342 tonnes recorded in November 2023 and in the corresponding month of 2022, respectively.

Chart 10: Top Five Type of Consignments by Air, Tonnes



- For the month of December 2023, transportation via air of ‘Other live plants, cuttings and slips, mushroom spawn’ (42 tonnes) recorded the highest volumes, followed by ‘Tractors’ (26 tonnes) in second place.
- Volumes of ‘Parts suitable for use with the machinery’ (20 tonnes) and ‘Molluscs live, fresh, chilled, frozen, dried, salted or in brine’ (18 tonnes) featured amongst the top 5 consignments transported by air (Chart 10).

Table 1: Cargo by mode of transport in tonnes

Year	Month	Rail cargo	Road cargo	Air cargo	Sea Landed	Sea Shipped	Sea Trans - shipped	Sea Cargo	Total Cargo
2020	Jan	124,661	281,305	641	172,554	225,880	10,570	409,004	815,611
	Feb	119,235	260,778	530	498,254	183,758	6,126	688,137	1,068,680
	Mar	116,267	258,529	279	243,494	273,582	10,633	527,709	902,783
	Apr	96,506	171,759	25	104,862	96,192	82,393	283,447	551,737
	May	105,771	215,121	325	218,352	233,748	67,622	519,722	840,939
	Jun	137,334	244,530	94	156,370	200,474	40,337	397,181	779,139
	Jul	140,141	315,101	101	229,253	139,011	65,397	433,661	889,004
	Aug	116,133	285,009	190	342,226	235,835	40,068	618,129	1,019,460
	Sep	172,107	294,764	222	401,518	376,935	4,095	782,548	1,249,640
	Oct	150,408	294,890	219	183,762	176,081	6,175	366,018	811,535
	Nov	146,555	355,067	308	342,464	287,662	3,546	633,672	1,135,602
	Dec	108,787	288,974	492	307,274	171,471	9,929	488,674	886,926
2021	Jan	107,641	275,398	303	398,439	199,624	16,420	614,482	997,824
	Feb	107,757	260,740	409	321,256	254,083	3,863	579,202	948,107
	Mar	114,211	290,517	582	315,040	230,399	4,986	550,425	955,735
	Apr	112,231	387,713	494	136,333	158,391	5,956	300,680	801,118
	May	123,098	279,922	530	198,667	202,549	6,174	407,390	810,940
	Jun	117,829	300,999	674	298,812	246,107	11,287	556,206	975,708
	Jul	110,889	305,752	552	162,996	201,612	47,081	411,689	828,881
	Aug	134,100	347,315	364	261,617	235,889	73,143	570,648	1,052,427
	Sep	123,279	357,723	380	329,971	376,386	69,625	775,982	1,257,364
	Oct	124,581	387,360	448	339,013	233,193	12,247	584,453	1,096,841
	Nov	122,938	379,542	463	257,163	243,513	314	500,991	1,003,933
	Dec	111,165	352,047	373	392,110	199,402	545	592,058	1,055,642

Table 1: cont....

	Month	Rail cargo	Road cargo	Air cargo	Sea Landed	Sea Shipped	Sea Trans - shipped	Sea Cargo	Total Cargo
2022	Jan	107,641	364,310	405	258,144	252,899	3,029	514,071	986,428
	Feb	95,348	340,340	286	473,804	167,884	21,382	663,070	1,099,044
	Mar	123,575	296,300	348	361,293	353,786	6,814	721,893	1,142,116
	Apr	98,815	313,006	293	237,328	132,793	2,689	372,810	784,925
	May	108,501	337,366	260	281,553	382,805	3,164	667,523	1,113,649
	Jun	125,152	277,835	256	354,258	292,154	3,256	649,668	1,052,911
	Jul	125,604	312,627	368	285,087	250,749	8,277	544,113	982,713
	Aug	103,071	325,034	440	396,095	325,079	1,218	722,392	1,150,937
	Sep	143,517	342,624	447	204,694	274,037	4,550	483,281	969,870
	Oct	123,687	347,699	206	207,041	362,174	11,089	580,305	1,051,896
	Nov	117,128	402,064	319	279,309	324,268	40,186	643,762	1,163,273
	Dec	107,634	321,184	342	319,228	503,800	12,227	835,255	1,264,415
2023	Jan	118,745	286,867	422	419,980	244,647	14,519	679,147	1,085,180
	Feb	102,966	285,737	370	292,400	318,255	6,425	617,080	1,006,153
	Mar	94,884	315,279	438	515,808	382,050	9,214	907,072	1,317,673
	Apr	100,444	292,148	263	147,158	232,737	3,063	382,958	775,813
	May	100,427	358,485	356	450,960	225,701	9,140	685,800	1,145,068
	Jun	99,107	277,053	304	315,048	364,379	2,460	681,887	1,058,351
	Jul	82,068	272,682	349	220,777	330,862	2,391	554,030	909,129
	Aug	51,388	415,835	251	457,131	229,252	3,198	689,580	1,157,055
	Sep	121,347	317,972	220	215,194	407,060	3,214	625,468	1,065,008
	Oct	111,950	339,605	255	267,532	461,537	34,842	763,911	1,215,722
	Nov	105,420	397,167	362	338,787	343,333	6,078	688,198	1,191,147
	Dec	85,687	318,991	346	297,427	283,536	4,432	585,395	990,419

Table 2: Cargo Index

Year	Month	Rail cargo Index	Road cargo Index	Air cargo Index	Sea Landed	Sea Shipped	Sea Trans shipped	Total Sea Cargo Index	Composite Cargo Index
2020	Jan	97.3	99.4	127.0	57.0	220.9	15.0	86.0	92.0
	Feb	93.0	92.2	104.9	164.5	179.7	8.7	144.7	120.5
	Mar	90.7	91.4	55.2	80.4	267.5	15.1	111.0	101.8
	Apr	75.3	60.7	5.0	34.6	94.1	117.1	59.6	62.2
	May	82.5	76.0	64.4	72.1	228.6	96.1	109.3	94.8
	Jun	107.2	86.4	18.7	51.6	196.0	57.3	83.5	87.8
	Jul	109.3	111.4	20.0	75.7	135.9	92.9	91.2	100.2
	Aug	90.6	100.8	37.6	113.0	230.6	56.9	130.0	114.9
	Sep	134.3	104.2	43.9	132.6	368.6	5.8	164.6	140.9
	Oct	117.4	104.2	43.3	60.7	172.2	8.8	77.0	91.5
	Nov	114.3	125.5	61.0	113.1	281.3	5.0	133.3	128.0
	Dec	84.9	102.2	97.4	101.5	167.7	14.1	102.8	100.0
2021	Jan	84.0	97.4	60.0	131.6	195.2	23.3	129.2	112.5
	Feb	84.1	92.2	81.0	106.1	248.4	5.5	121.8	106.9
	Mar	89.1	102.7	115.3	104.0	225.3	7.1	115.8	107.8
	Apr	87.6	137.1	98.0	45.0	154.9	8.5	63.2	90.3
	May	96.0	99.0	105.1	65.6	198.0	8.8	85.7	91.4
	Jun	91.9	106.4	133.5	98.7	240.6	16.0	117.0	110.0
	Jul	86.5	108.1	109.3	53.8	197.1	66.9	86.6	93.4
	Aug	104.6	122.8	72.1	86.4	230.6	103.9	120.0	118.7
	Sep	96.2	126.5	75.2	109.0	368.0	98.9	163.2	141.8
	Oct	97.2	136.9	88.7	112.0	228.0	17.4	122.9	123.7
	Nov	95.9	134.2	91.7	84.9	238.1	0.4	105.4	113.2
	Dec	86.7	124.5	73.9	129.5	195.0	0.8	124.5	119.0
	Jan	84.0	128.8	80.3	85.3	247.3	4.3	108.1	111.2
	Feb	74.4	120.3	56.8	156.5	164.2	30.4	139.5	123.9
	Mar	96.4	104.7	68.9	119.3	345.9	9.7	151.8	128.8
	Apr	77.1	110.7	58.1	78.4	129.8	3.8	78.4	88.5
	May	84.7	119.3	51.5	93.0	374.3	4.5	140.4	125.6
	Jun	97.6	98.2	50.7	117.0	285.7	4.6	136.6	118.7
	Jul	98.0	110.5	73.0	94.1	245.2	11.8	114.4	110.8
	Aug	80.4	114.9	87.2	130.8	317.9	1.7	151.9	129.8
	Sep	112.0	121.1	88.6	67.6	267.9	6.5	101.6	109.3
	Oct	96.5	122.9	40.8	68.4	354.1	15.8	122.1	118.6
	Nov	91.4	142.1	63.2	92.2	317.1	57.1	135.4	131.1
	Dec	84.0	113.5	67.8	105.4	492.6	17.4	175.7	142.6

Table 2: Cargo Index continue.....

Year	Month	Rail cargo Index	Road cargo Index	Air cargo Index	Sea Landed	Sea Shipped	Sea Trans shipped	Total Sea Cargo Index	Composite Cargo Index
2022	Jan	84.0	128.8	80.3	85.3	247.3	4.3	108.1	111.2
	Feb	74.4	120.3	56.8	156.5	164.2	30.4	139.5	123.9
	Mar	96.4	104.7	68.9	119.3	345.9	9.7	151.8	128.8
	Apr	77.1	110.7	58.1	78.4	129.8	3.8	78.4	88.5
	May	84.7	119.3	51.5	93.0	374.3	4.5	140.4	125.6
	Jun	97.6	98.2	50.7	117.0	285.7	4.6	136.6	118.7
	Jul	98.0	110.5	73.0	94.1	245.2	11.8	114.4	110.8
	Aug	80.4	114.9	87.2	130.8	317.9	1.7	151.9	129.8
	Sep	112.0	121.1	88.6	67.6	267.9	6.5	101.6	109.3
	Oct	96.5	122.9	40.8	68.4	354.1	15.8	122.1	118.6
	Nov	91.4	142.1	63.2	92.2	317.1	57.1	135.4	131.1
	Dec	84.0	113.5	67.8	105.4	492.6	17.4	175.7	142.6
2023	Jan	92.6	101.4	83.6	138.7	239.2	20.6	142.8	122.3
	Feb	80.3	101.0	73.2	96.6	311.2	9.1	129.8	113.4
	Mar	74.0	111.5	86.7	170.3	373.6	13.1	190.8	148.6
	Apr	78.4	103.3	52.1	48.6	227.6	4.4	80.5	87.5
	May	78.4	126.7	70.6	148.9	220.7	13.0	144.2	129.1
	Jun	77.3	97.9	60.2	104.0	356.3	3.5	143.4	119.3
	Jul	64.0	96.4	69.2	72.9	323.5	3.4	116.5	102.5
	Aug	40.1	147.0	49.8	151.0	224.2	4.5	145.0	130.4
	Sep	94.7	112.4	43.6	71.1	398.0	4.6	131.6	120.1
	Oct	87.3	120.1	50.5	88.4	451.3	49.5	160.7	137.1
	Nov	82.3	140.4	71.8	111.9	335.7	8.6	144.7	134.3
	Dec	66.9	112.8	68.5	98.2	277.2	6.3	123.1	111.7

Methodology

- Data source** : The volume data for rail cargo are sourced from Trans-Namib, while the source for road and air cargo volume data is from the Namibia Statistics Agency (Trade Statistics Sub-division). Volumes of Sea cargo, which comprises of sea-landed, sea-shipped, and sea Trans-shipped, are sourced from Namport.
- Index calculation** : The index of cargo has been weighted using the volume data in tonnes for 2015.
- Conversion** : 1 basis point = 0.01 percent