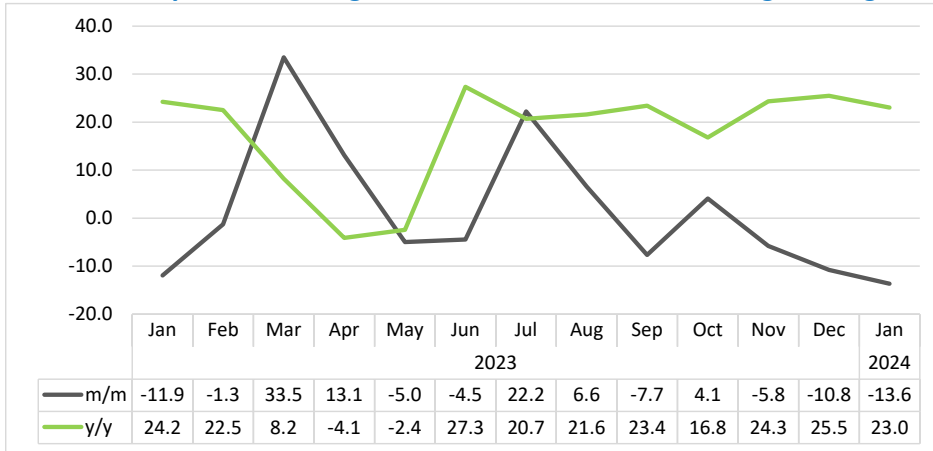


PASSENGERS ARRIVALS & DEPARTURES

JANUARY 2024

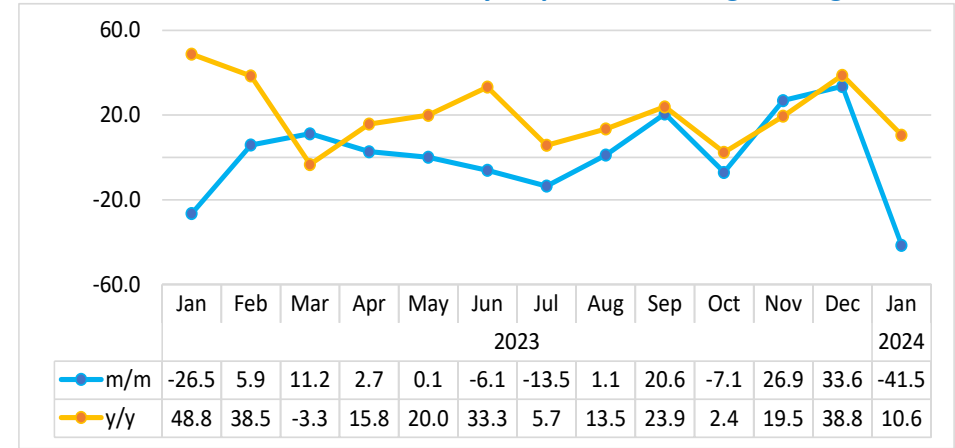


Chart 1: Composite Passengers Movement Index, Percentage Change



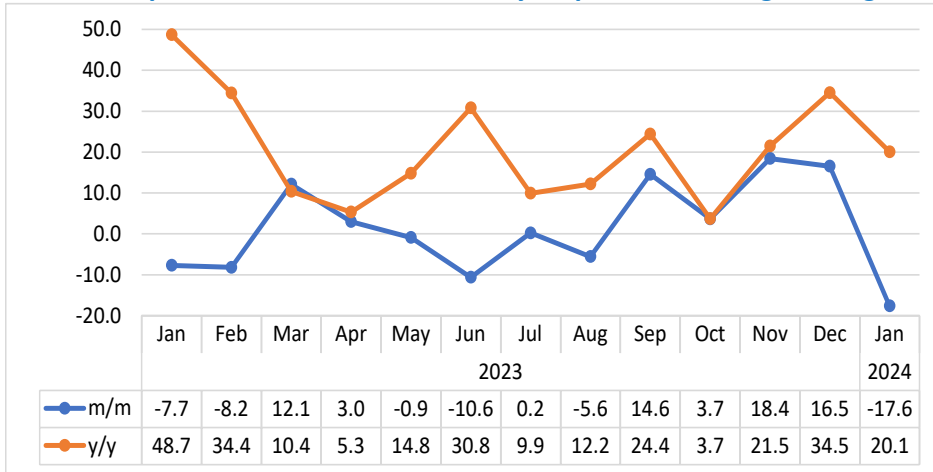
- The **Composite Passengers Movement Index** consisting of regional, international, and domestic arrivals and departures of passengers at airports declined on monthly basis by 13.6 percent in January 2024, compared to a reduction of 10.8 percent registered in the preceding month. On the other hand, the index increased by 23.0 percent year-on-year (Chart 1).
- In absolute terms, a total of 71 988 passengers’ movement was recorded at airport terminals across the country during January 2024, as opposed to 83 362 passengers and 58 515 passengers that were registered in the preceding month and in the corresponding month of 2023, respectively.
- Hosea Kutako International Airport continues to be the main contributor to passengers’ movement, accounting for the largest share of 77.0 percent, followed by Walvis Bay Airport (9.9%) and Eros Airport (7.4%).

Chart 2: Arrivals Index for Walvis Bay Airport, Percentage Change



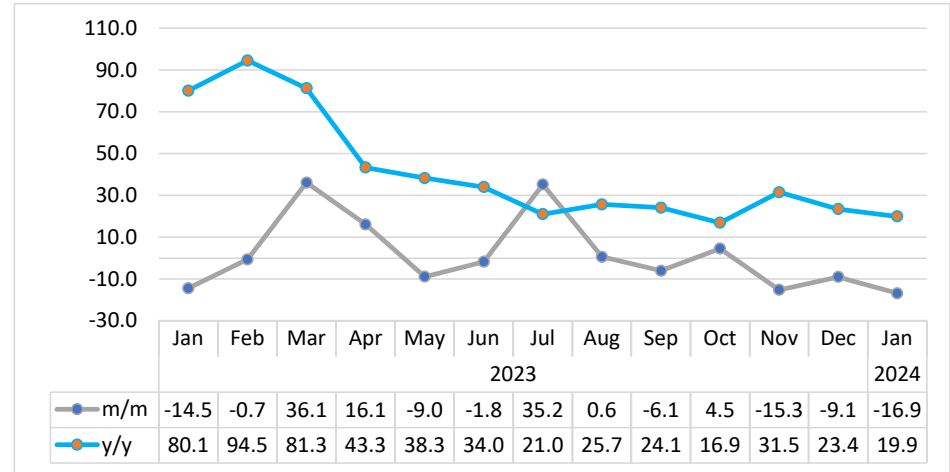
- The **Arrivals Index** for Walvis Bay Airport on a monthly basis declined by 41.5 percent in January 2024, as opposed to a growth of 33.6 percent that was recorded a month earlier. In contrast, the index grew by 10.6 percent year-on-year (Chart 2).
- In absolute terms, the number of passengers that arrived via Walvis Bay airport decreased to 3 117 passengers in January 2024 down from 5 326 passengers registered in the preceding month, and up from 2 819 passengers were witnessed in the corresponding month of 2023.

Chart 3: Departures Index for Walvis Bay Airport, Percentage Change



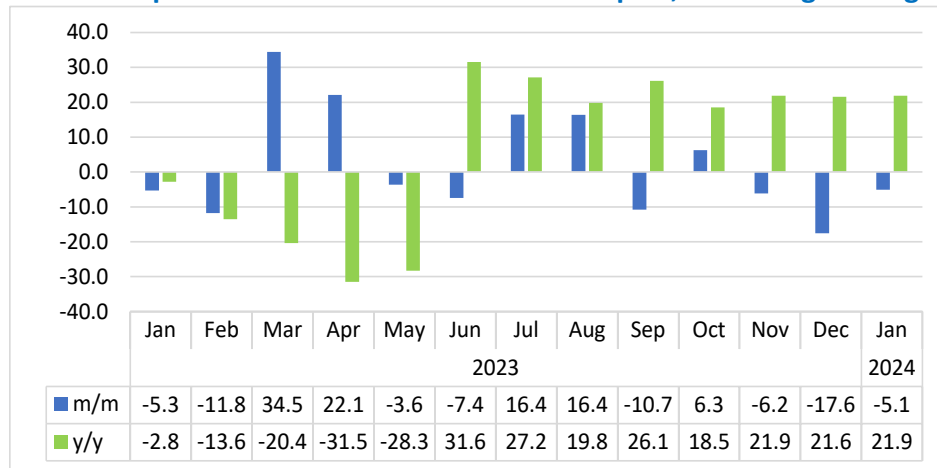
- The **Departures Index for Walvis Bay Airport** in January 2024 declined on a monthly basis by 17.6 percent, in contrast to an increase of 16.5 percent noted in December 2023. Conversely, the index grew by 20.1 percent year-on-year (Chart 3).
- The number of passengers that departed via Walvis Bay airport decreased to 3 994 passengers in January 2024 from 4 849 passengers recorded a month earlier, and up from 3 326 passengers were registered in the corresponding period of 2023.

Chart 4: Arrivals Index for Hosea Kutako Airport, Percentage Change



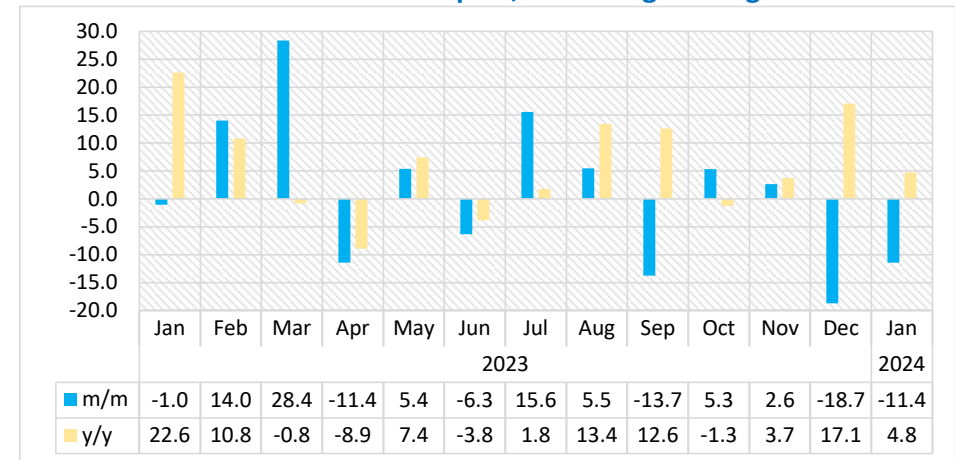
- The **Arrivals Index for Hosea Kutako Airport** in January 2024 declined on a monthly basis by 16.9 percent, a deterioration when compared to a reduction of 9.1 percent recorded in the previous month. On the other hand, the index registered an increase of 19.9 percent year-on-year (Chart 4).
- For January 2024, the number of passengers that arrived via Hosea Kutako Airport terminals declined to 26 715 passengers, from 32 142 passengers recorded in the preceding month, while 22 276 passengers were recorded in the corresponding month of 2023.

Chart 5: Departures Index for Hosea Kutako Airport, Percentage Change



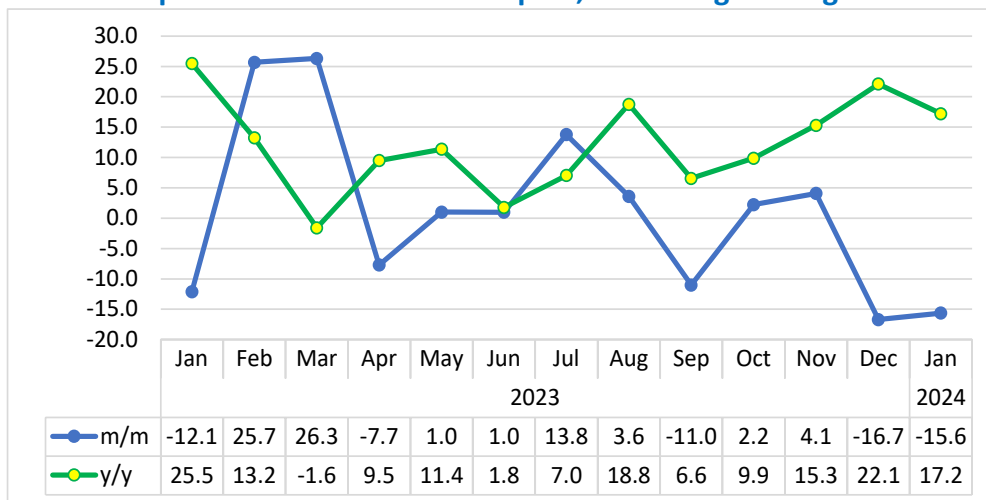
- The **Departures Index for Hosea Kutako Airport** in January 2024 declined by 5.1 percent on a monthly basis, compared to a reduction of 17.6 percent recorded in the preceding month. Conversely, the index increased by 21.9 percent over the year (Chart 5).
- In absolute terms, during January 2024 the number of passengers that departed through Hosea Kutako airport terminals decreased to 28 731 passengers from 30 275 passengers registered in December 2023, while 23 574 passengers were recorded in the corresponding month of 2023.

Chart 6: Arrivals Index for Eros Airport, Percentage Change



- For the month of January 2024, **Arrivals Index for Eros Airport** declined by 11.4 percent on a monthly basis, compared to a reduction of 18.7 percent posted a month earlier. On the other hand, the index grew by 4.8 percent year-on- year (Chart 6).
- The number of passengers that arrived in January 2024 via Eros Airport terminals decreased to 2 624 passengers from 2 963 passengers that were registered in the preceding month, while 2 505 passengers were recorded in the corresponding period of 2023.

Chart 7: Departures Index for Eros Airport, Percentage Change



- The **Index of Departures for Eros Airport** in January 2024 declined on monthly basis by 15.6 percent compared to a reduction of 16.7 percent that was recorded a month earlier. Conversely, the index increased by 17.2 percent over the year (Chart 7).
- The number of passengers that departed through Eros Airport terminals during January 2024 decreased to 2 684 passengers from 3 181 passengers registered during the preceding month. A total of 2 290 passengers were registered in the corresponding month of 2023.

Table 1: The indices of regional, international and domestic arrivals and departures

Year	Month	Total Passengers	Index for (Regional, International & Domestic) Arrivals	Index for (Regional, International & Domestic) Departures
2020	Jan	98.2	94.8	101.6
	Feb	92.4	92.6	92.2
	Mar	60.6	57.1	64.1
	Apr	2.0	1.1	3.0
	May	8.2	8.2	8.1
	Jun	9.4	9.1	9.7
	Jul	12.0	11.3	12.7
	Aug	7.8	7.7	8.0
	Sep	7.8	7.3	8.2
	Oct	21.2	22.8	19.6
	Nov	30.5	32.3	28.7
	Dec	34.8	37.3	32.2
2021	Jan	28.3	26.0	30.7
	Feb	19.7	19.2	20.1
	Mar	27.0	27.5	26.5
	Apr	33.9	34.2	33.5
	May	37.5	36.8	38.3
	Jun	26.8	25.6	28.0
	Jul	21.6	22.6	20.6
	Aug	34.1	34.1	34.2
	Sep	42.4	44.8	40.0
	Oct	58.3	61.2	55.4
	Nov	58.4	61.4	55.4
	Dec	43.7	44.3	43.1

Table 1: The indices of regional, international and domestic arrivals and departures continue...

Year	Month	Total Passengers	Index for (Regional, International & Domestic) Arrivals	Index for (Regional, International & Domestic) Departures
2022	Jan	55.2	41.1	69.4
	Feb	55.3	40.2	70.4
	Mar	83.5	61.8	105.5
	Apr	106.6	76.3	137.2
	May	99.5	72.1	127.3
	Jun	72.9	72.8	73.0
	Jul	94.0	101.4	86.5
	Aug	99.4	98.0	100.8
	Sep	90.4	93.0	87.8
	Oct	99.5	101.9	97.1
	Nov	88.0	83.9	92.3
	Dec	77.8	78.9	76.8
2023	Jan	68.6	66.2	70.9
	Feb	67.7	68.7	66.7
	Mar	90.4	92.5	88.3
	Apr	102.2	102.4	102.1
	May	97.1	95.3	99.0
	Jun	92.8	93.1	92.4
	Jul	113.4	119.9	106.8
	Aug	120.9	121.3	120.4
	Sep	111.6	114.4	108.8
	Oct	116.2	117.9	114.5
	Nov	109.5	106.8	112.2
	Dec	97.7	100.0	95.3
2024	Jan	84.4	80.1	88.6

Methodology

- Background:** The information in this report looks at both citizen and non-citizen travelers' arrivals and departures.
- Data sources:** Namibia Airports Company
- Base year:** The volumes have been referenced to 2015 data as of November 2019
- Conversion:** 1 basis point = 0.01 percent