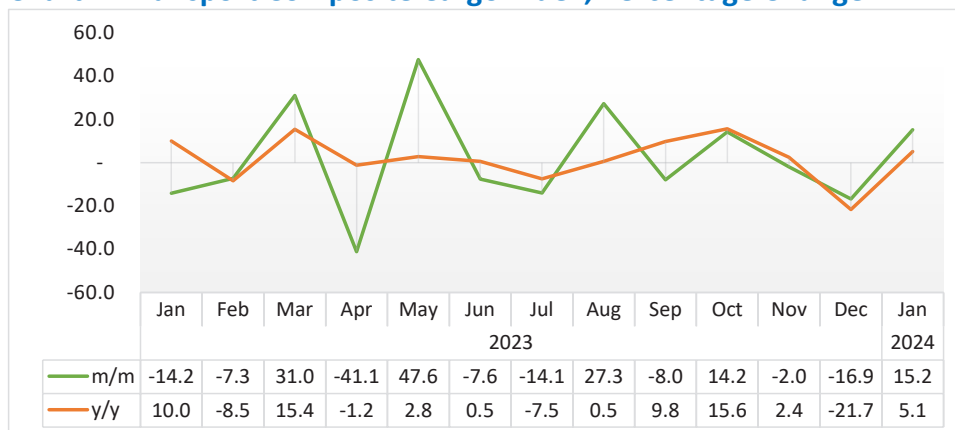


# TRANSPORT

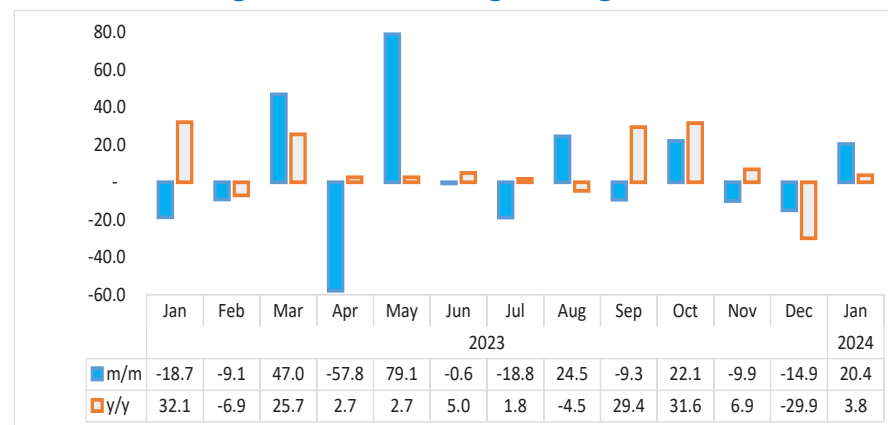
JANUARY 2024



**Chart 1: Transport Composite Cargo Index, Percentage Change**



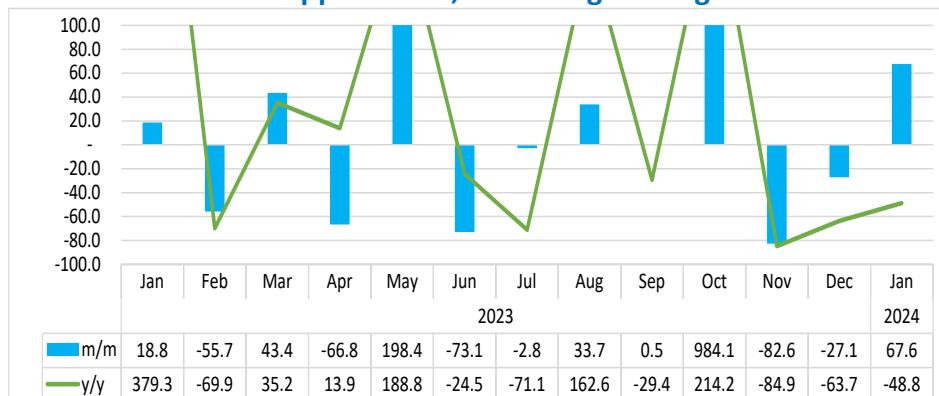
**Chart 2: Sea Cargo Index, Percentage Change**



- The **Transport Composite Cargo Index** (Chart 1) consists of Road Cargo, Air Cargo, Sea Cargo, and Rail Cargo. In January 2024, the index rebounded on monthly basis recording an increase of 15.2 percent in contrast to a decline of 16.9 percent recorded a month earlier. Additionally, the index grew by 5.1 percent year-on-year.
- The monthly increase is owed to a rise in volumes of cargo for consignments that were transported via sea and road during the month of January 2024.
- Namibia transported 1 140 637 tonnes of cargo in January 2024 compared to 990 419 tonnes and 1 085 180 tonnes that were transported a month earlier and in the corresponding month of 2023, respectively.

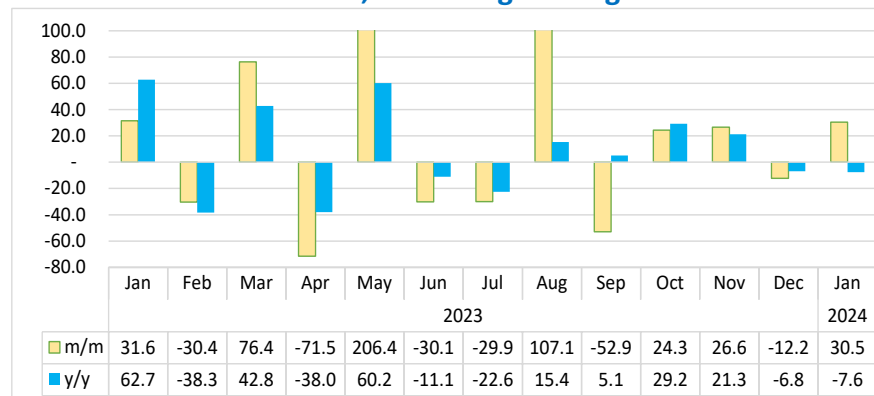
- The **Sea Cargo Index** which consists of Sea Landed, Sea trans-shipped and Sea-Shipped recorded a monthly increase of 20.4 percent in January 2024, as opposed to a reduction of 14.9 percent posted in the preceding month. Additionally, the index increased by 3.8 percent year-on-year (Chart 2).
- A total of 704 966 tonnes of cargo was transported by sea in January 2024 compared to 585 395 tonnes and 679 147 tonnes registered in December 2023 and in the corresponding month of 2023, respectively.

**Chart 3: Sea Trans-shipped Index, Percentage Change<sup>1</sup>**



- The **Sea Trans-Shipped Index** for January 2024 expanded on a monthly basis by 67.6 percent, in contrast to a decrease of 27.1 percent that was registered in the previous month. On the other hand, the index declined by 48.8 percent over the year (Chart 3).
- The total volume of goods trans-shipped by sea during the month of January 2024 amounted to 7 429 tonnes compared to 4 432 tonnes and 14 519 tonnes that were recorded in the preceding month and in the corresponding month of 2023, respectively.

**Chart 4: Sea Landed Index, Percentage Change<sup>2</sup>**

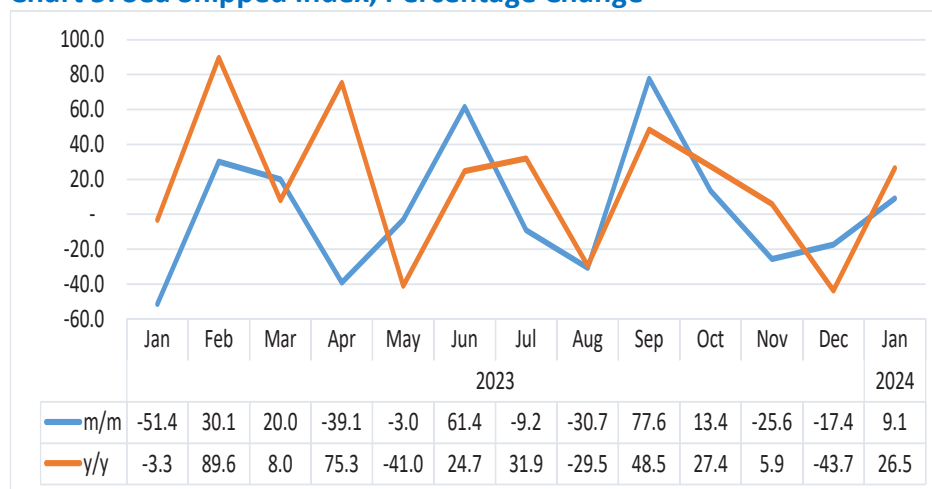


- The **Sea Landed Index** on a monthly basis increased by 30.5 percent during January 2024 as opposed to a reduction of 12.2 percent witnessed in the preceding month. In contrast, the index decreased by 7.6 percent year-on-year (Chart 4).
- A total of 388 101 tonnes of goods were landed by sea during the month of January 2024, compared to 297 427 tonnes and 419 980 tonnes that were landed in December 2023 and in the corresponding month of 2023, respectively.

<sup>1</sup> This chart is limited to 100 percent for better readability.

<sup>2</sup> This chart is limited to 100 percent for better readability.

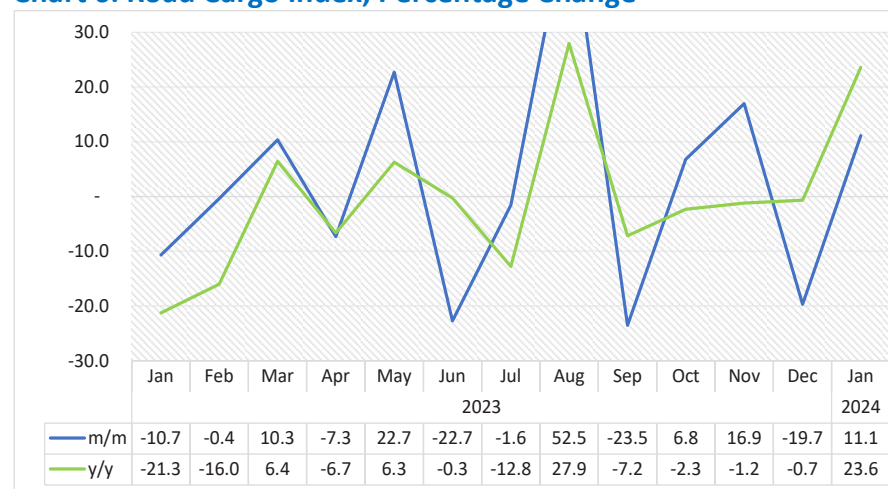
**Chart 5: Sea Shipped Index, Percentage Change<sup>3</sup>**



- The **Sea Shipped Index** for January 2024 on a monthly basis grew by 9.1 percent, in contrast to a reduction of 17.4 percent registered in the preceding month. Moreover, the index increased by 26.5 percent year-on-year (Chart 5).
- During the review period, a total of 309 436 tonnes of goods were shipped via sea, in relation to 283 536 tonnes and 244 647 tonnes shipped in December 2023 and in the corresponding month of 2023, respectively.

<sup>3</sup> This chart is limited to 100 percent for better readability.

**Chart 6: Road Cargo Index, Percentage Change<sup>4</sup>**



- The **Road Cargo Index** for January 2024 posted a monthly increase of 11.1 percent, as opposed to a reduction of 19.7 percent noted in the previous month (Chart 6). Moreover, the index increased by 23.6 percent year-on-year.
- A total of 354 466 tonnes of goods were transported via road during the month of January 2024, in contrast to 318 991 tonnes and 286 867 tonnes that were transported in December 2023 and in the corresponding month of 2023, respectively.

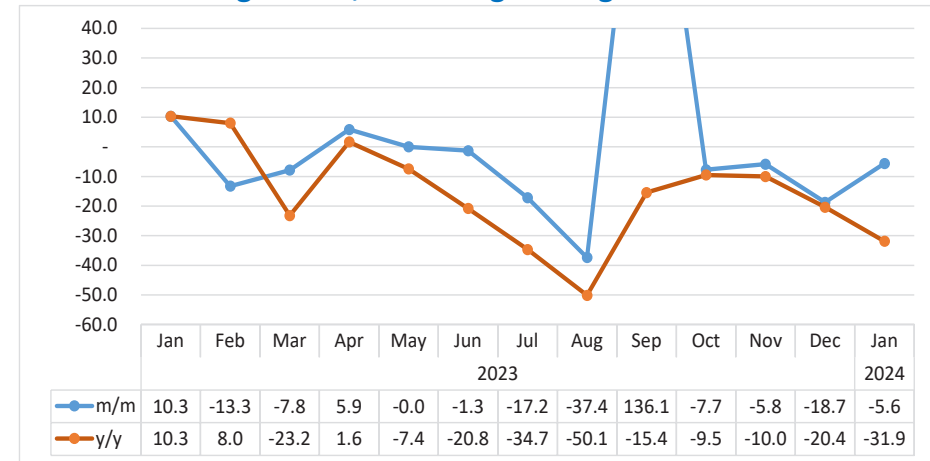
<sup>4</sup> This chart is limited to 30 percent for better readability.

**Chart 7: Top Five Type of Cargo by Road, Tonnes**



- During January 2024, ‘Particle board and similar board of wood or other ligneous materials’ recorded the highest volumes of 34 498 tonnes transported by road, followed by 27 568 tonnes of Maize corn and Petroleum oils (20 193 tonnes) into second and third place, (Chart 7).

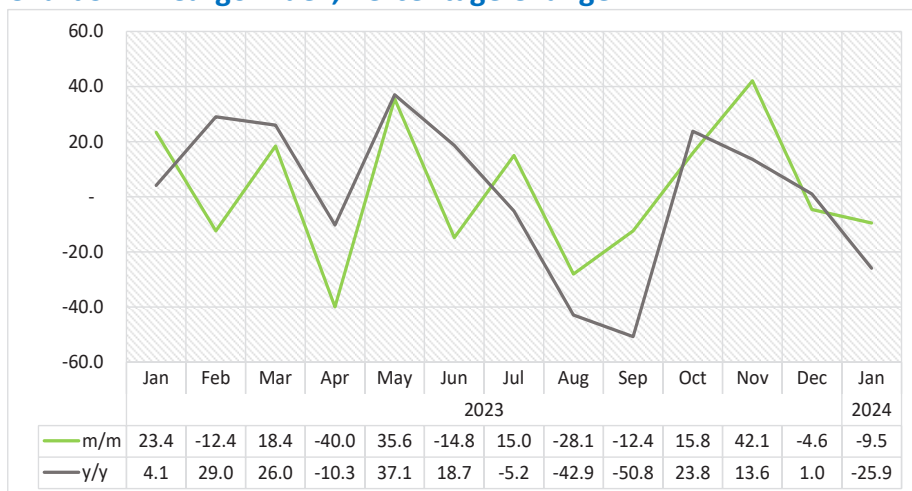
**Chart 8: Rail Cargo Index, Percentage Change<sup>5</sup>**



- For January 2024, the **Rail Cargo Index** contracted on a monthly basis by 5.6 percent, compared to a decrease of 18.7 percent registered in the previous month. Moreover, the index declined by 31.9 percent year-on-year (Chart 8).
- A total of 80 892 tonnes of cargo was transported via rail during the review period, as opposed to 85 687 tonnes recorded in December 2023 and 118 745 tonnes registered in the corresponding month of 2023.

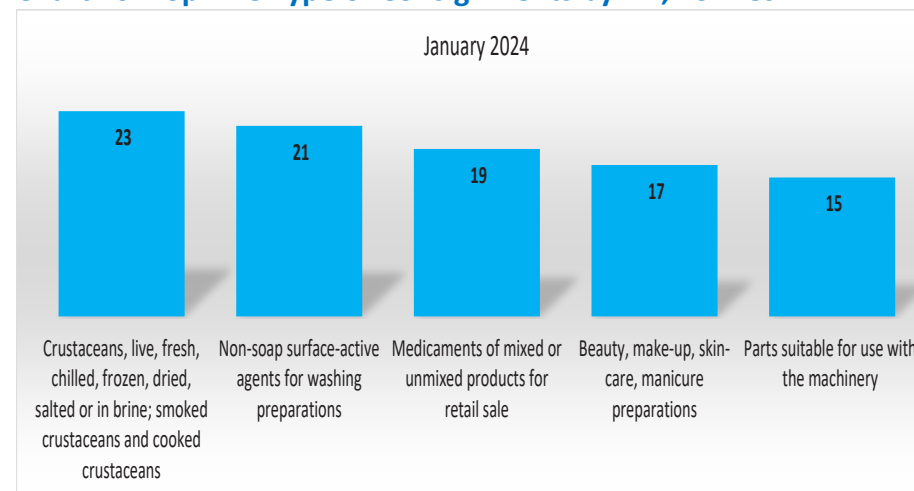
<sup>5</sup> This chart is limited to 40 percent for better readability.

**Chart 9: Air Cargo Index, Percentage Change**



- In January 2024, the **Air Cargo Index** posted a monthly decline of 9.5 percent, relative to reduction of 4.6 percent registered in the preceding month (Chart 9). Moreover, the index decreased by 25.9 percent year-on-year.
- A total of 313 tonnes of goods were transported via air during the month of January 2024 compared to 346 tonnes and 422 tonnes recorded in December 2023 and in the corresponding month of 2023, respectively.

**Chart 10: Top Five Type of Consignments by Air, Tonnes**



- For the month of January 2024, transportation via air of ‘Crustaceans, live, fresh, chilled, frozen, dried, salted or in brine; smoked crustaceans and cooked crustaceans’ (23 tonnes) recorded the highest volumes, followed by ‘Non-soap surface-active agents for washing preparations’ (21 tonnes) in second place.
- Volumes of ‘Medicaments of mixed or unmixed products for retail sale’ (19 tonnes), ‘Beauty, make-up, skin-care, manicure preparations’ (17 tonnes) and ‘Parts suitable for use with the machinery’ (15 tonnes) featured amongst the top 5 consignments transported by air (Chart 10).

**Table 1: Cargo by mode of transport in tonnes**

Year	Month	Rail cargo	Road cargo	Air cargo	Sea Landed	Sea Shipped	Sea Trans - shipped	Sea Cargo	Total Cargo
2020	Jan	124,661	281,305	641	172,554	225,880	10,570	409,004	815,611
	Feb	119,235	260,778	530	498,254	183,758	6,126	688,137	1,068,680
	Mar	116,267	258,529	279	243,494	273,582	10,633	527,709	902,783
	Apr	96,506	171,759	25	104,862	96,192	82,393	283,447	551,737
	May	105,771	215,121	325	218,352	233,748	67,622	519,722	840,939
	Jun	137,334	244,530	94	156,370	200,474	40,337	397,181	779,139
	Jul	140,141	315,101	101	229,253	139,011	65,397	433,661	889,004
	Aug	116,133	285,009	190	342,226	235,835	40,068	618,129	1,019,460
	Sep	172,107	294,764	222	401,518	376,935	4,095	782,548	1,249,640
	Oct	150,408	294,890	219	183,762	176,081	6,175	366,018	811,535
	Nov	146,555	355,067	308	342,464	287,662	3,546	633,672	1,135,602
	Dec	108,787	288,974	492	307,274	171,471	9,929	488,674	886,926
2021	Jan	107,641	275,398	303	398,439	199,624	16,420	614,482	997,824
	Feb	107,757	260,740	409	321,256	254,083	3,863	579,202	948,107
	Mar	114,211	290,517	582	315,040	230,399	4,986	550,425	955,735
	Apr	112,231	387,713	494	136,333	158,391	5,956	300,680	801,118
	May	123,098	279,922	530	198,667	202,549	6,174	407,390	810,940
	Jun	117,829	300,999	674	298,812	246,107	11,287	556,206	975,708
	Jul	110,889	305,752	552	162,996	201,612	47,081	411,689	828,881
	Aug	134,100	347,315	364	261,617	235,889	73,143	570,648	1,052,427
	Sep	123,279	357,723	380	329,971	376,386	69,625	775,982	1,257,364
	Oct	124,581	387,360	448	339,013	233,193	12,247	584,453	1,096,841
	Nov	122,938	379,542	463	257,163	243,513	314	500,991	1,003,933
	Dec	111,165	352,047	373	392,110	199,402	545	592,058	1,055,642

**Table 1: cont....**

	Month	Rail cargo	Road cargo	Air cargo	Sea Landed	Sea Shipped	Sea Trans - shipped	Sea Cargo	Total Cargo
2022	Jan	107,641	364,310	405	258,144	252,899	3,029	514,071	986,428
	Feb	95,348	340,340	286	473,804	167,884	21,382	663,070	1,099,044
	Mar	123,575	296,300	348	361,293	353,786	6,814	721,893	1,142,116
	Apr	98,815	313,006	293	237,328	132,793	2,689	372,810	784,925
	May	108,501	337,366	260	281,553	382,805	3,164	667,523	1,113,649
	Jun	125,152	277,835	256	354,258	292,154	3,256	649,668	1,052,911
	Jul	125,604	312,627	368	285,087	250,749	8,277	544,113	982,713
	Aug	103,071	325,034	440	396,095	325,079	1,218	722,392	1,150,937
	Sep	143,517	342,624	447	204,694	274,037	4,550	483,281	969,870
	Oct	123,687	347,699	206	207,041	362,174	11,089	580,305	1,051,896
	Nov	117,128	402,064	319	279,309	324,268	40,186	643,762	1,163,273
	Dec	107,634	321,184	342	319,228	503,800	12,227	835,255	1,264,415
2023	Jan	118,745	286,867	422	419,980	244,647	14,519	679,147	1,085,180
	Feb	102,966	285,737	370	292,400	318,255	6,425	617,080	1,006,153
	Mar	94,884	315,279	438	515,808	382,050	9,214	907,072	1,317,673
	Apr	100,444	292,148	263	147,158	232,737	3,063	382,958	775,813
	May	100,427	358,485	356	450,960	225,701	9,140	685,800	1,145,068
	Jun	99,107	277,053	304	315,048	364,379	2,460	681,887	1,058,351
	Jul	82,068	272,682	349	220,777	330,862	2,391	554,030	909,129
	Aug	51,388	415,835	251	457,131	229,252	3,198	689,580	1,157,055
	Sep	121,347	317,972	220	215,194	407,060	3,214	625,468	1,065,008
	Oct	111,950	339,605	255	267,532	461,537	34,842	763,911	1,215,722
	Nov	105,420	397,167	362	338,787	343,333	6,078	688,198	1,191,147
	Dec	85,687	318,991	346	297,427	283,536	4,432	585,395	990,419
2024	Jan	80,892	354,466	313	388,101	309,436	7,429	704,966	1,140,637

**Table 2: Cargo Index**

Year	Month	Rail cargo Index	Road cargo Index	Air cargo Index	Sea Landed	Sea Shipped	Sea Trans shipped	Total Sea Cargo Index	Composite Cargo Index
2020	Jan	97.3	99.4	127.0	57.0	220.9	15.0	86.0	92.0
	Feb	93.0	92.2	104.9	164.5	179.7	8.7	144.7	120.5
	Mar	90.7	91.4	55.2	80.4	267.5	15.1	111.0	101.8
	Apr	75.3	60.7	5.0	34.6	94.1	117.1	59.6	62.2
	May	82.5	76.0	64.4	72.1	228.6	96.1	109.3	94.8
	Jun	107.2	86.4	18.7	51.6	196.0	57.3	83.5	87.8
	Jul	109.3	111.4	20.0	75.7	135.9	92.9	91.2	100.2
	Aug	90.6	100.8	37.6	113.0	230.6	56.9	130.0	114.9
	Sep	134.3	104.2	43.9	132.6	368.6	5.8	164.6	140.9
	Oct	117.4	104.2	43.3	60.7	172.2	8.8	77.0	91.5
	Nov	114.3	125.5	61.0	113.1	281.3	5.0	133.3	128.0
	Dec	84.9	102.2	97.4	101.5	167.7	14.1	102.8	100.0
2021	Jan	84.0	97.4	60.0	131.6	195.2	23.3	129.2	112.5
	Feb	84.1	92.2	81.0	106.1	248.4	5.5	121.8	106.9
	Mar	89.1	102.7	115.3	104.0	225.3	7.1	115.8	107.8
	Apr	87.6	137.1	98.0	45.0	154.9	8.5	63.2	90.3
	May	96.0	99.0	105.1	65.6	198.0	8.8	85.7	91.4
	Jun	91.9	106.4	133.5	98.7	240.6	16.0	117.0	110.0
	Jul	86.5	108.1	109.3	53.8	197.1	66.9	86.6	93.4
	Aug	104.6	122.8	72.1	86.4	230.6	103.9	120.0	118.7
	Sep	96.2	126.5	75.2	109.0	368.0	98.9	163.2	141.8
	Oct	97.2	136.9	88.7	112.0	228.0	17.4	122.9	123.7
	Nov	95.9	134.2	91.7	84.9	238.1	0.4	105.4	113.2
	Dec	86.7	124.5	73.9	129.5	195.0	0.8	124.5	119.0
	Jan	84.0	128.8	80.3	85.3	247.3	4.3	108.1	111.2
	Feb	74.4	120.3	56.8	156.5	164.2	30.4	139.5	123.9
	Mar	96.4	104.7	68.9	119.3	345.9	9.7	151.8	128.8
	Apr	77.1	110.7	58.1	78.4	129.8	3.8	78.4	88.5
	May	84.7	119.3	51.5	93.0	374.3	4.5	140.4	125.6
	Jun	97.6	98.2	50.7	117.0	285.7	4.6	136.6	118.7
	Jul	98.0	110.5	73.0	94.1	245.2	11.8	114.4	110.8
	Aug	80.4	114.9	87.2	130.8	317.9	1.7	151.9	129.8
	Sep	112.0	121.1	88.6	67.6	267.9	6.5	101.6	109.3
	Oct	96.5	122.9	40.8	68.4	354.1	15.8	122.1	118.6
	Nov	91.4	142.1	63.2	92.2	317.1	57.1	135.4	131.1
	Dec	84.0	113.5	67.8	105.4	492.6	17.4	175.7	142.6

**Table 2: Cargo Index continue.....**

Year	Month	Rail cargo Index	Road cargo Index	Air cargo Index	Sea Landed	Sea Shipped	Sea Trans shipped	Total Sea Cargo Index	Composite Cargo Index
2022	Jan	84.0	128.8	80.3	85.3	247.3	4.3	108.1	111.2
	Feb	74.4	120.3	56.8	156.5	164.2	30.4	139.5	123.9
	Mar	96.4	104.7	68.9	119.3	345.9	9.7	151.8	128.8
	Apr	77.1	110.7	58.1	78.4	129.8	3.8	78.4	88.5
	May	84.7	119.3	51.5	93.0	374.3	4.5	140.4	125.6
	Jun	97.6	98.2	50.7	117.0	285.7	4.6	136.6	118.7
	Jul	98.0	110.5	73.0	94.1	245.2	11.8	114.4	110.8
	Aug	80.4	114.9	87.2	130.8	317.9	1.7	151.9	129.8
	Sep	112.0	121.1	88.6	67.6	267.9	6.5	101.6	109.3
	Oct	96.5	122.9	40.8	68.4	354.1	15.8	122.1	118.6
	Nov	91.4	142.1	63.2	92.2	317.1	57.1	135.4	131.1
	Dec	84.0	113.5	67.8	105.4	492.6	17.4	175.7	142.6
2023	Jan	92.6	101.4	83.6	138.7	239.2	20.6	142.8	122.3
	Feb	80.3	101.0	73.2	96.6	311.2	9.1	129.8	113.4
	Mar	74.0	111.5	86.7	170.3	373.6	13.1	190.8	148.6
	Apr	78.4	103.3	52.1	48.6	227.6	4.4	80.5	87.5
	May	78.4	126.7	70.6	148.9	220.7	13.0	144.2	129.1
	Jun	77.3	97.9	60.2	104.0	356.3	3.5	143.4	119.3
	Jul	64.0	96.4	69.2	72.9	323.5	3.4	116.5	102.5
	Aug	40.1	147.0	49.8	151.0	224.2	4.5	145.0	130.4
	Sep	94.7	112.4	43.6	71.1	398.0	4.6	131.6	120.1
	Oct	87.3	120.1	50.5	88.4	451.3	49.5	160.7	137.1
	Nov	82.3	140.4	71.8	111.9	335.7	8.6	144.7	134.3
	Dec	66.9	112.8	68.5	98.2	277.2	6.3	123.1	111.7
2024	Jan	63.1	125.3	61.9	128.2	302.6	10.6	148.3	128.6



## Methodology

- Data source** : The volume data for rail cargo are sourced from Trans-Namib, while the source for road and air cargo volume data is from the Namibia Statistics Agency (Trade Statistics Sub-division). Volumes of Sea cargo, which comprises of sea-landed, sea-shipped, and sea Trans-shipped, are sourced from Namport.
- Index calculation** : The index of cargo has been weighted using the volume data in tonnes for 2015.
- Conversion** : 1 basis point = 0.01 percent