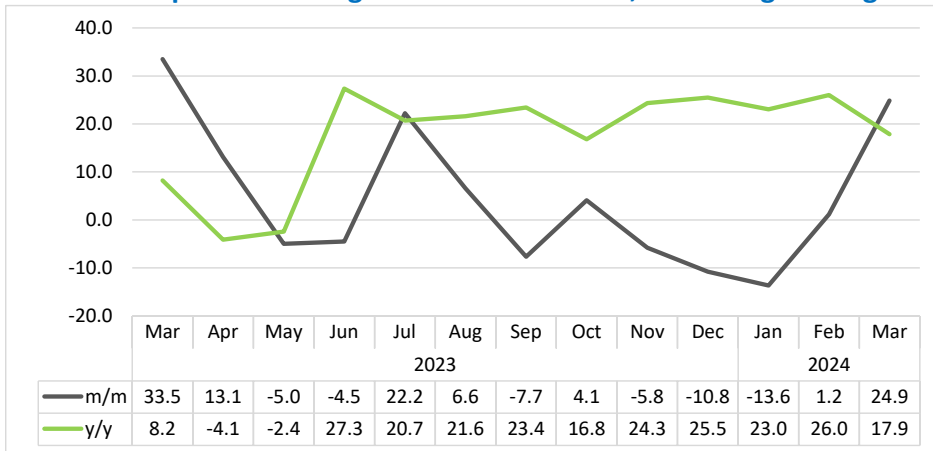


# PASSENGERS ARRIVALS & DEPARTURES

## MARCH 2024

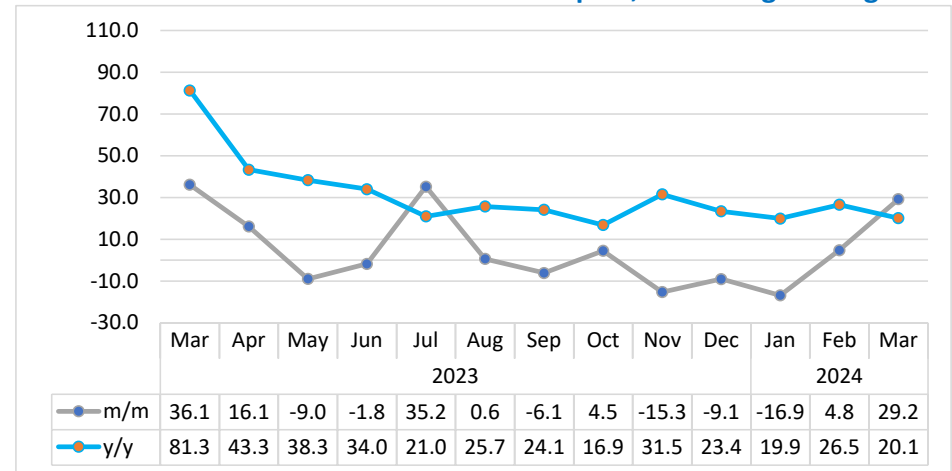


**Chart 1: Composite Passengers Movement Index, Percentage Change**



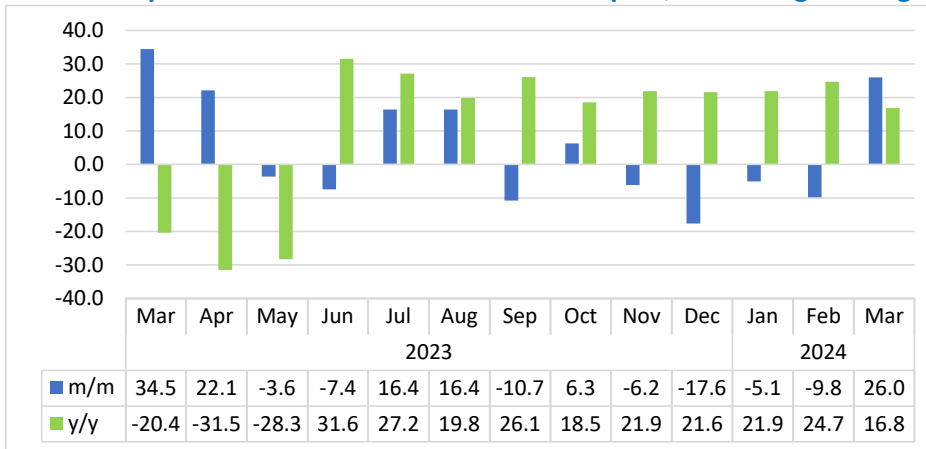
- The **Composite Passengers Movement Index** consisting of regional, international, and domestic arrivals and departures of passengers at airports on monthly basis grew by 24.9 percent in March 2024, compared to an increase of 1.2 percent registered in the preceding month. Additionally, the index increased by 17.9 percent year-on-year (Chart 1).
- In absolute terms, a total of 90 917 passengers’ movement was recorded at airport terminals across the country during March 2024, as opposed to 72 818 passengers and 77 137 passengers that were registered in the previous month and in the corresponding month of 2023, respectively.
- Hosea Kutako International Airport continues to be the main contributor to passengers’ movement, accounting for the largest share of 75.7 percent, followed by Walvis Bay (8.5%) and Eros Airport (8.0%).

**Chart 2: Arrivals Index for Hosea Kutako Airport, Percentage Change 2:**



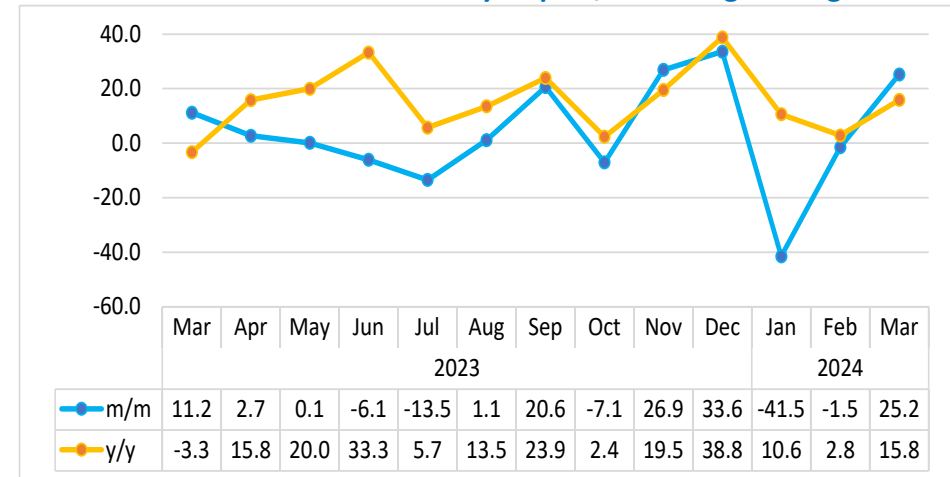
- The **Arrivals Index for Hosea Kutako Airport** in March 2024 increased by 29.2 percent on a monthly basis, compared to a growth of 4.8 percent posted a month earlier. Additionally, the index registered an increase of 20.1 percent year-on-year (Chart 2).
- For March 2024, the number of passengers that arrived via Hosea Kutako Airport terminals increased to 36 173 passengers, from 27 997 passengers and 30 116 passengers recorded in the preceding month, and in the corresponding month of 2023, respectively.

**Chart 3: Departures Index for Hosea Kutako Airport, Percentage Change**



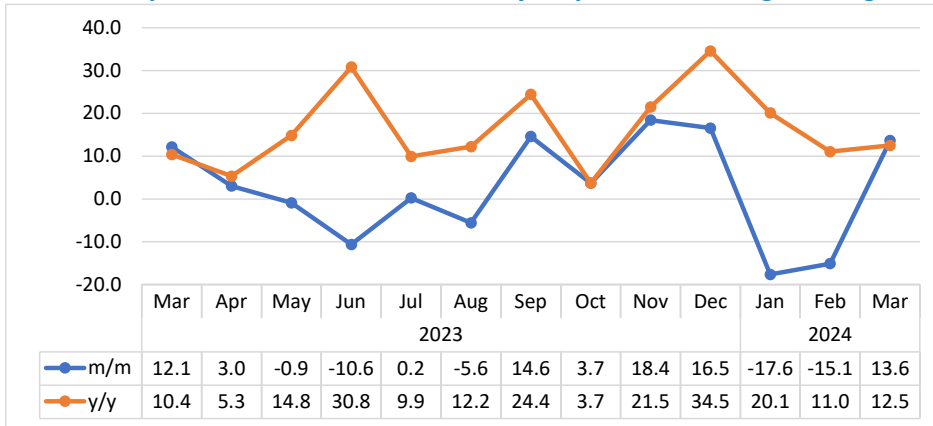
- The **Departures Index for Hosea Kutako Airport** in March 2024 rebounded on a monthly basis recording an increase of 26.0 percent, in contrast to a reduction of 9.8 percent recorded in the preceding month. Additionally, the index increased by 16.8 percent over the year (Chart 3).
- In absolute terms, during March 2024 the number of passengers that departed through Hosea Kutako airport terminals increased to 32 669 passengers from 25 926 passengers and 27 964 passengers registered in February 2024 and in the corresponding month of 2023, respectively.

**Chart 4: Arrivals Index for Walvis Bay Airport, Percentage Change**



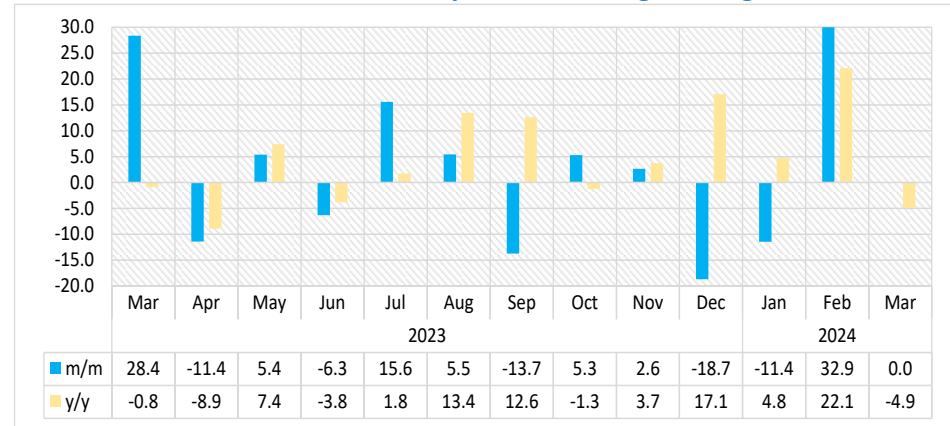
- For the month of March 2024, **Arrivals Index for Walvis Bay Airport** rebounded on a monthly basis registered an increase of 25.2 percent, as opposed to a reduction of 1.5 percent posted in the previous month. Additionally, the index grew by 15.8 percent year-on-year (Chart 4).
- The number of passengers that arrived in March 2024 via Walvis Bay Airport terminals increased to 3 844 passengers from 3 070 passengers and 3 319 passengers that were registered in the preceding month and in the corresponding period of 2023.

**Chart 5: Departures Index for Walvis Bay Airport, Percentage Change**



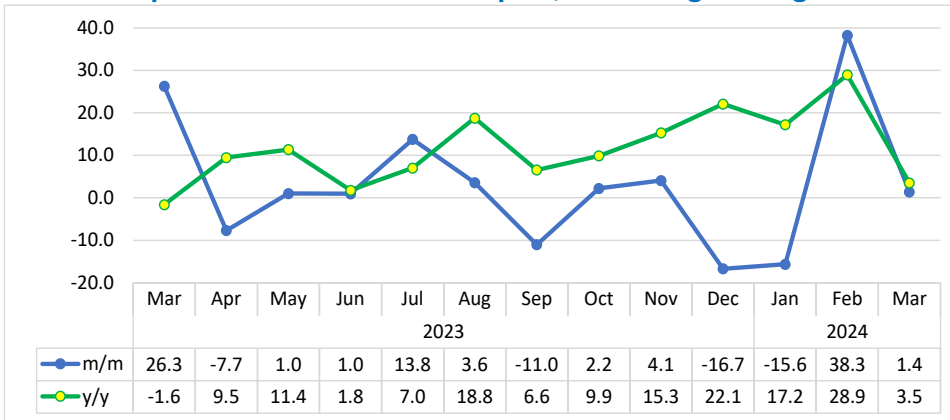
- The **Index of Departures for Walvis Bay Airport** in March 2024 increased on monthly basis by 13.6 percent in contrast to a reduction of 15.1 percent that was recorded a month earlier. Additionally, the index increased by 12.5 percent over the year (Chart 5).
- The number of passengers that departed through Walvis Bay Airport terminals during March 2024 increased to 3 853 passengers from 3 391 passengers and 3 425 passengers registered during the preceding month and in the corresponding month of 2023, respectively.

**Chart 6: Arrivals Index for Eros Airport, Percentage Change**



- For the month of March 2024, **Arrivals Index for Eros Airport** on a monthly basis recorded a no change, compared to a growth of 32.9 percent posted in the preceding month. However, the index declined by 4.9 percent year-on-year (Chart 6).
- The number of passengers that arrived in March 2024 via Eros Airport terminals increased to 3 488 passengers from 3 487 passengers registered in the previous month, while 3 666 passengers were recorded in the corresponding period of 2023.

**Chart 7: Departures Index for Eros Airport, Percentage Change**



- The Departures Index for **Eros Airport in March 2024** slowed down on a monthly basis registered an increase of 1.4 percent, compared to a growth of 38.3 percent noted in February 2024. However, the index rose by 3.5 percent year-on-year (Chart 7).
- The number of passengers that departed via Eros airport increased to 3 763 passengers in March 2024 from 3 711 passengers and 3 635 passengers recorded a month earlier and in the corresponding period of 2023, respectively.

**Table 1: The indices of regional, international and domestic arrivals and departures**

Year	Month	Total Passengers	Index for (Regional, International & Domestic) Arrivals	Index for (Regional, International & Domestic) Departures
<b>2020</b>	Jan	98.2	94.8	101.6
	Feb	92.4	92.6	92.2
	Mar	60.6	57.1	64.1
	Apr	2.0	1.1	3.0
	May	8.2	8.2	8.1
	Jun	9.4	9.1	9.7
	Jul	12.0	11.3	12.7
	Aug	7.8	7.7	8.0
	Sep	7.8	7.3	8.2
	Oct	21.2	22.8	19.6
	Nov	30.5	32.3	28.7
	Dec	34.8	37.3	32.2
<b>2021</b>	Jan	28.3	26.0	30.7
	Feb	19.7	19.2	20.1
	Mar	27.0	27.5	26.5
	Apr	33.9	34.2	33.5
	May	37.5	36.8	38.3
	Jun	26.8	25.6	28.0
	Jul	21.6	22.6	20.6
	Aug	34.1	34.1	34.2
	Sep	42.4	44.8	40.0
	Oct	58.3	61.2	55.4
	Nov	58.4	61.4	55.4
	Dec	43.7	44.3	43.1

**Table 1: The indices of regional, international and domestic arrivals and departures continue...**

Year	Month	Total Passengers	Index for (Regional, International & Domestic) Arrivals	Index for (Regional, International & Domestic) Departures
<b>2022</b>	Jan	55.2	41.1	69.4
	Feb	55.3	40.2	70.4
	Mar	83.5	61.8	105.5
	Apr	106.6	76.3	137.2
	May	99.5	72.1	127.3
	Jun	72.9	72.8	73.0
	Jul	94.0	101.4	86.5
	Aug	99.4	98.0	100.8
	Sep	90.4	93.0	87.8
	Oct	99.5	101.9	97.1
	Nov	88.0	83.9	92.3
	Dec	77.8	78.9	76.8
<b>2023</b>	Jan	68.6	66.2	70.9
	Feb	67.7	68.7	66.7
	Mar	90.4	92.5	88.3
	Apr	102.2	102.4	102.1
	May	97.1	95.3	99.0
	Jun	92.8	93.1	92.4
	Jul	113.4	119.9	106.8
	Aug	120.9	121.3	120.4
	Sep	111.6	114.4	108.8
	Oct	116.2	117.9	114.5
	Nov	109.5	106.8	112.2
	Dec	97.7	100.0	95.3
<b>2024</b>	Jan	84.4	80.1	88.6
	Feb	85.3	86.6	84.0
	Mar	106.5	108.2	104.8

## ***Methodology***

- Background:** The information in this report looks at both citizen and non-citizen travelers' arrivals and departures.
- Data sources:** Namibia Airports Company
- Base year:** The volumes have been referenced to 2015 data as of November 2019
- Conversion:** 1 basis point = 0.01 percent